

An abstract painting featuring large, rounded, overlapping shapes in various colors including green, blue, pink, orange, and red. The shapes are set against a light, textured background. The overall style is soft and painterly, with visible brushstrokes and a sense of depth. The colors are vibrant and saturated, creating a rich, multi-colored composition.

FINDLAY GALLERIES

THREE CENTURIES IN ART

BELYNDA HENRY

LIVING PALETTE



FINDLAY GALLERIES

THREE CENTURIES IN ART

BELYNDA HENRY

LIVING PALETTE

32 EAST 57TH STREET, 2ND FLOOR, NEW YORK, NEW YORK 10022 • (212) 421-5390

165 WORTH AVENUE, PALM BEACH, FLORIDA 33480 • (561) 655-2090

WWW.FINDLAYGALLERIES.COM



Belynda Henry

Findlay Galleries is pleased to present *Living Palette*, a major exhibition of new paintings by the distinguished Australian artist Belynda Henry. This presentation marks her most extensive showing in the United States to date and her third solo exhibition with the gallery, following acclaimed presentations in Palm Beach and New York.

Widely recognized as one of Australia's leading contemporary landscape painters and a multiple finalist for both the Wynne and Archibald Prizes, Henry brings to her art a refined synthesis of observation and emotion. Living and working in a lush valley north of Sydney, she draws continual inspiration from the natural world—the subtle shifts of light, the rhythms of the seasons, and the quiet resonance of the landscape.

Henry employs a distinctive technique that combines oil and wax, built up in multiple layers to create surfaces of remarkable depth and tactility. The result is a body of work with an unmistakably earthy presence. Her palette of soft pastels, enlivened by luminous bursts of color, conveys both serenity and vitality. Through her loose, layered

application, Henry achieves a graceful interplay between abstraction and landscape, evoking movement, distance, and the passage of time.

In *Living Palette*, Henry deepens her exploration of the dialogue between abstraction and the natural world. Her process begins outdoors, through plein-air observation, and evolves in the studio, where memory, emotion, and intuition re-imagine what she has seen. The result is an expressive language of color and form that transcends depiction, transforming direct experience into atmosphere.

Each painting embodies Henry's sense of happiness and wonder—qualities that are felt rather than declared. The vitality within her work emerges organically from her engagement with nature and from her belief that painting is a living conversation between artist, subject, and viewer.

To live with these paintings is to share in that vitality. Their presence fills a space with quiet energy, inviting reflection and renewal. Joy and beauty here are not static ideals, but ever-shifting forces—alive in color, texture, and the spirit that shaped them.



(cover image) Kaleidoscopic Landscape | oil and wax on linen | 40 x 60 in. | FG© 141965



Side Effects of the Solar Eclipse

oil and wax on linen

72 x 72 in.

FG© 141972





Island Highlights | oil and wax on linen | 40 x 60 in. | FG© 141964



Light Golden Dust Storm | oil and wax on linen | 40 x 60 in. | FG© 141963

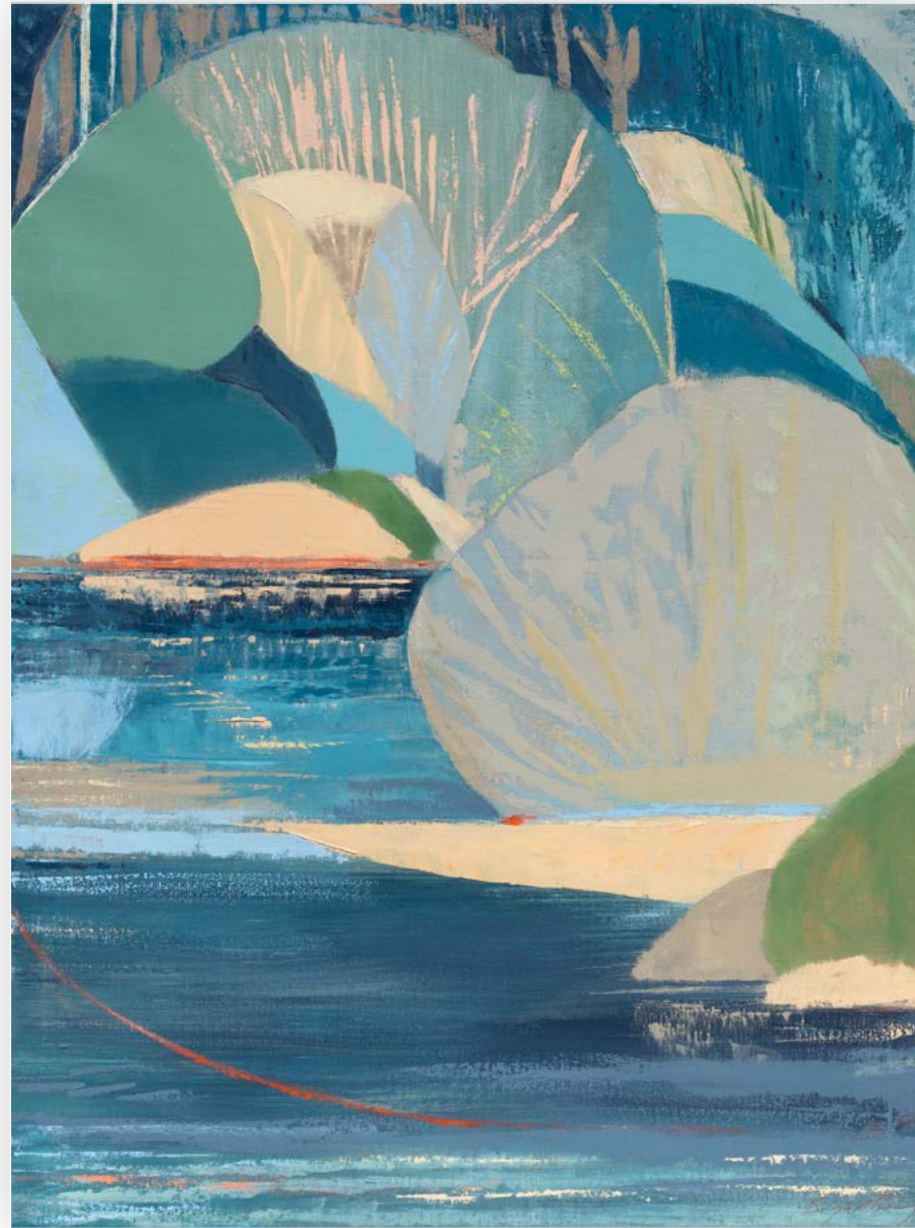


Moonglade (mangata)
oil and wax on linen
78 x 78 in.
FG© 141973





The Night Flower. Evening Primrose
oil and wax on linen | 48 x 36 in. | FG© 141954



Under the Shadow of the Moon
oil and wax on linen | 48 x 36 in. | FG© 141952



An Imperfect Equilibrium
oil and wax on linen | 48 x 36 in. | FG© 141953



"I don't attempt to paint a clear representation of these scenes but take the essential parts that move me. Then, back in my studio, I reassemble the memories much like a mosaic—into a simplified interpretation of the beauty that surrounds and profoundly affects me." - Belynda Henry

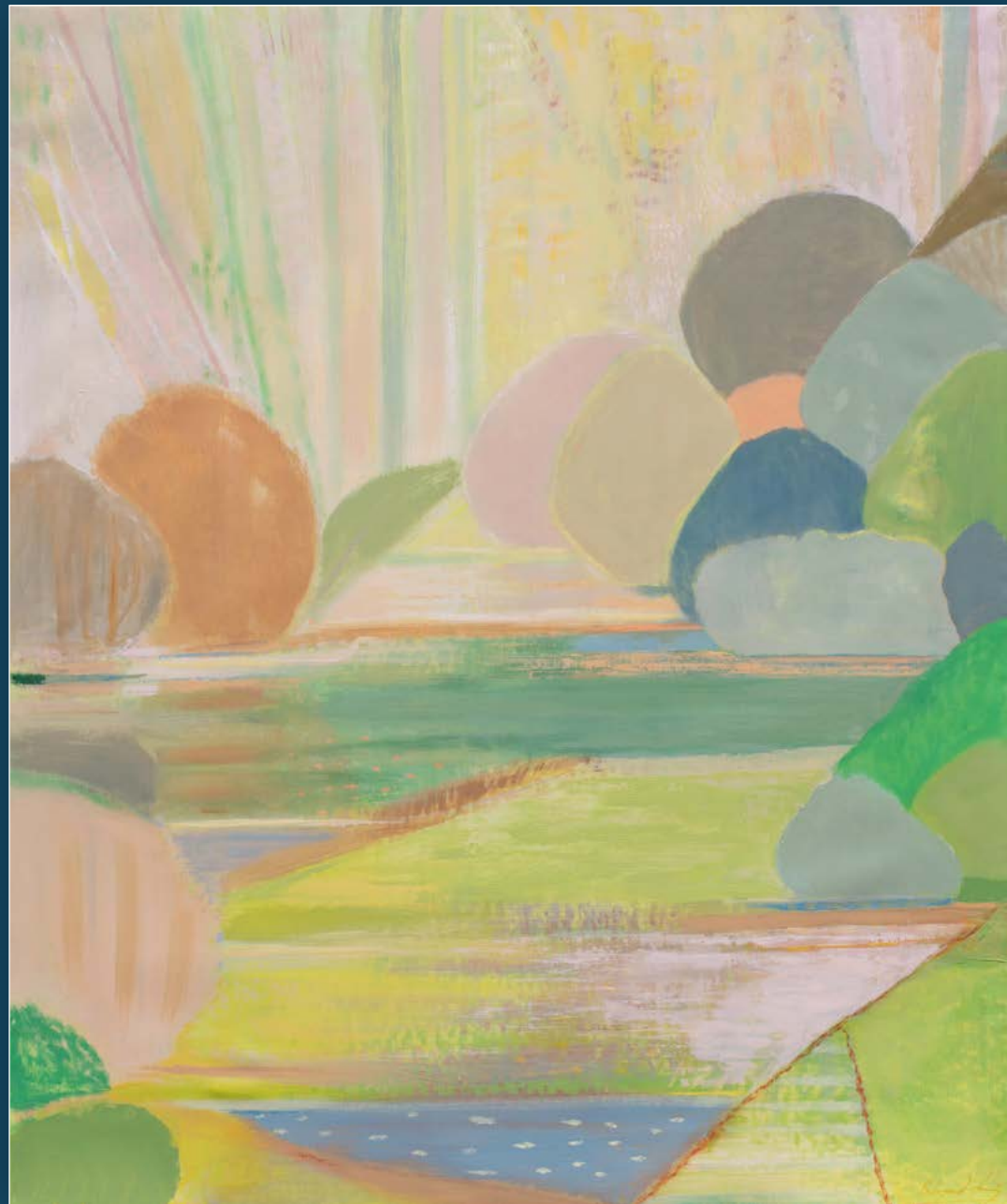
Soundscape (biophony and geophony)

oil and wax on linen

60 x 72 in.

FG© 141971





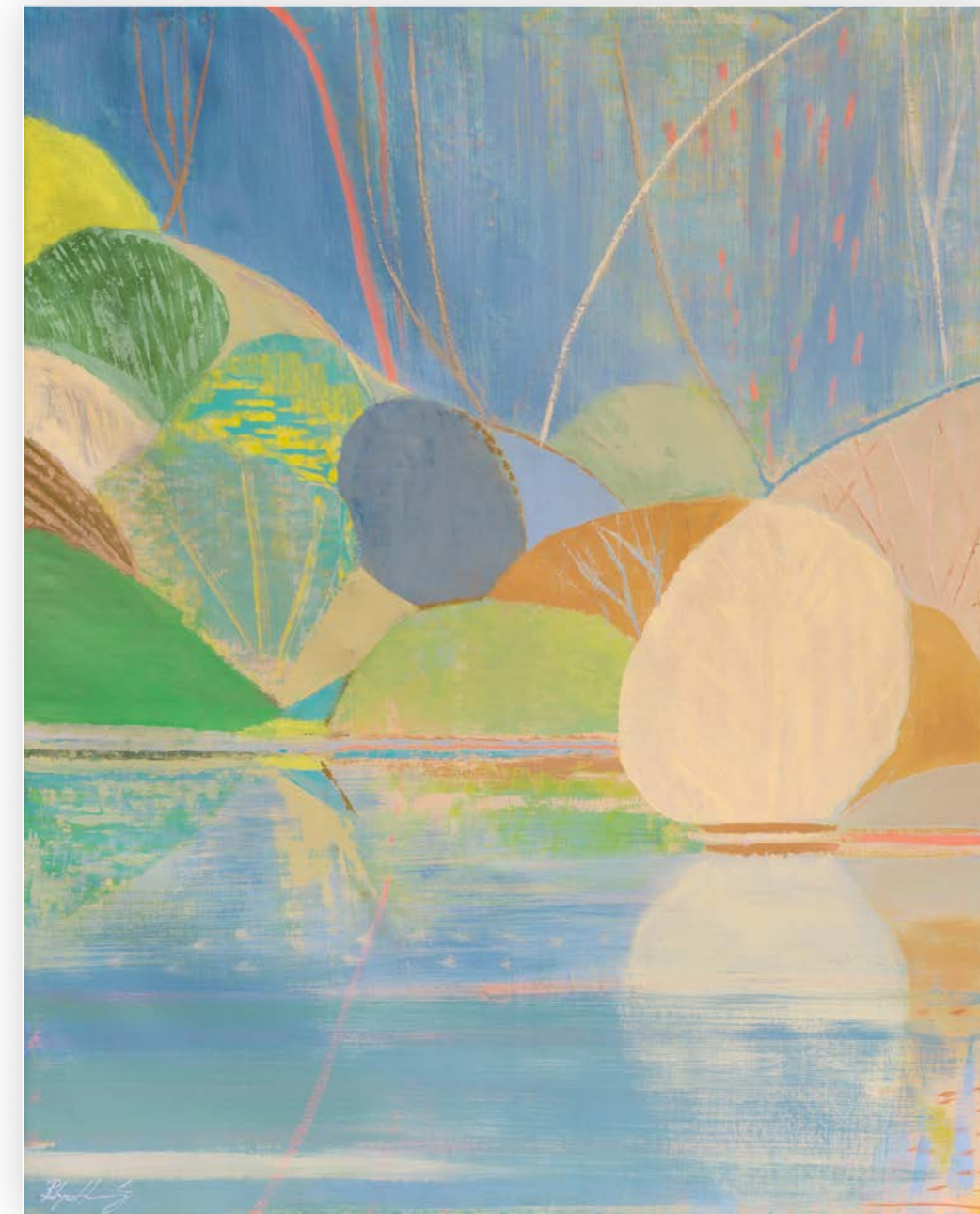
Light Solstice in Green
oil and wax on linen
72 x 60 in.
FG© 141970

The Crossover
oil and wax on linen
60 x 48 in.
FG© 141967





Call of the Lyrebird
oil and wax on linen
60 x 48 in.
FG© 141968





Moment to Moment | oil and wax on linen | 36 x 48 in. | FG© 141958



Rise and Fall | oil and wax on linen | 36 x 48 in. | FG© 141957



Ochre Basin

oil and wax on linen | 24 x 26 in. | FG© 141943



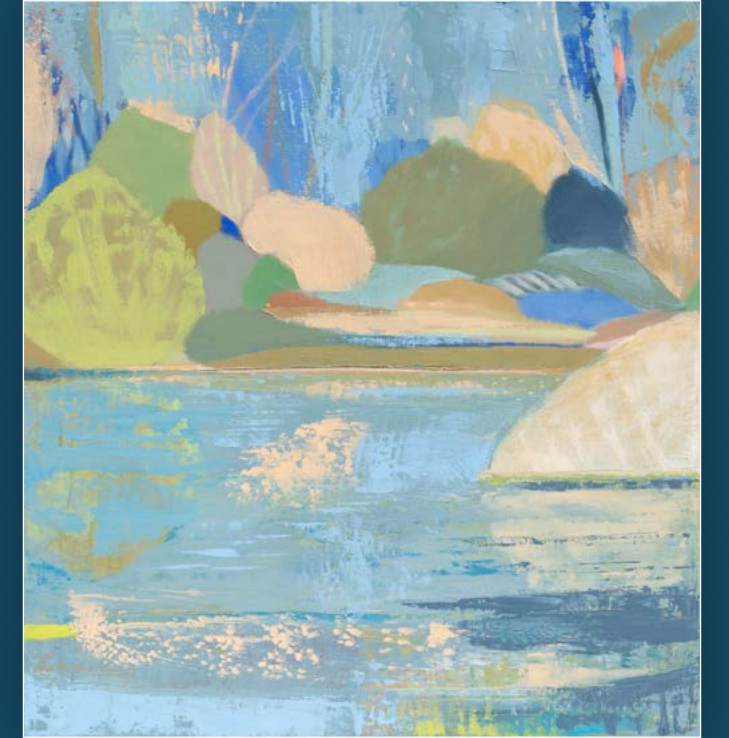
Golden Hour

oil and wax on linen | 26 x 24 in. | FG© 141945



Valley Breeze with August Morning Light

oil and wax on linen | 24 x 26 in. | FG© 141944



The Afterglow in Blue

oil and wax on linen | 26 x 24 in. | FG© 141946



Please contact our galleries for inquiries, acquisitions and consignments.

New York

32 East 57th Street, 2nd Floor
New York, NY 10022
(212) 421-5390
newyork@findlayart.com

Palm Beach

165 Worth Avenue
Palm Beach, FL 33480
(561) 655-2090
palmbeach@findlayart.com

WWW.FINDLAYGALLERIES.COM

FINDLAY GALLERIES

THREE CENTURIES IN ART



Midnight Radiance | oil and wax on linen | 24 x 36 in. | FG© 141949