

An abstract painting featuring thick, expressive brushstrokes in vibrant red, green, and blue. The colors are layered and blended, creating a sense of depth and movement. The background is a mix of these colors, with some areas appearing more saturated than others. The overall effect is one of dynamic energy and color contrast.

FINDLAY GALLERIES

PTOLEMY
MANN

SIGNIFICANT COLOUR

FINDLAY GALLERIES
THREE CENTURIES IN ART

Significant Colour presents a new body of work exploring three techniques: hand dyed and woven works, paintings on canvas and 'Thread Paintings' where these two processes merge into one astonishing surface. Balanced between textile and fine art these new works reveal that the act of painting is close to the act of dyeing. Applying pigment to a hand-woven ground in quick, wet circumstances creates a permanent and spontaneous gesture that can't be adjusted later. Mann's practice of dyeing thread and painting on canvas is deeply connected.

Large canvases glow with ephemeral gestures creating alternative, abstract landscapes. Elemental themes are revealed through stained colourfields in conjunction with visceral brushstrokes. In contrast; refined woven surfaces float with bold chromatic minimalism. Painted veils hover above woven grounds.

– Ptolemy Mann



32 EAST 57TH STREET, 2ND FLOOR, NEW YORK, NY 10022 · (212) 421-5390
165 WORTH AVENUE, PALM BEACH, FL 33480 · (561) 655-2090

Copyright © October 2025, Wally Findlay Galleries International, Inc. All rights reserved.



Ptolemy Mann in her studio

“Ptolemy Mann’s woven artworks have long been concerned as much with the histories and possibilities of painting as those of hand-loom weaving. For inspiration, she looks to the works of Mark Rothko, Joan Mitchell and Helen Frankenthaler more than those of Anni Albers or Sheila Hicks. But what does it mean for an artist to paint onto a weaving; to apply a brushstroke to her own hand-woven, stretched and framed cloth; to layer a split-second, vibrant gestural mark over a painstakingly dyed and woven coloured ground? Mann’s recent work poses precisely this question. To feel our way towards an answer and to fully appreciate the boldness and significance of this move, we need to begin to unravel the long, complex and mostly unequal relationship between painting and weaving.

Most recently Mann has created a new series of Thread Paintings in which free, gestural strokes of colour are painted onto her tightly woven panels. Given the time and labour needed to create her hand-woven surfaces, this is a courageous step. Breaking the ‘rules’ of both weaving and painting, Mann’s brushstrokes are loaded with paint and with meaning. They could be seen as a

violent obliteration of the woven surface, yet the paint adds more colour, sitting in juxtaposition and harmony with the woven ground, sometimes soaking and bleeding into the fibres, sometimes appearing to float on top. Dyed colour and applied colour sit together, complicating the distinction between structure and surface, the woven and the painted, the thread and the trace. In Mann’s work, the thread becomes the trace and the trace becomes the thread. Woven threads suggest painted marks and painted marks bleed into woven threads in a fluid, fugitive process. In other words, painting and weaving become indistinct in effect, if not in process. Ptolemy Mann is a weaver who paints with thread and an artist who paints on thread. She is both a weaver and a painter creating works in which the categories of painting and weaving become unstable, running into each other. In this way, her work introduces equality to the centuries-long relationship between painting and weaving.”

– Ann Coxon
(Curator, Formerly of Tate Modern, UK)
From her Essay for the monograph ‘THREAD PAINTING’



THREAD PAINTINGS

Indigo Mountain River, 2025
hand dyed and woven viscose with acrylic paint
29 1/2 x 23 5/8 in.
FG© 141890

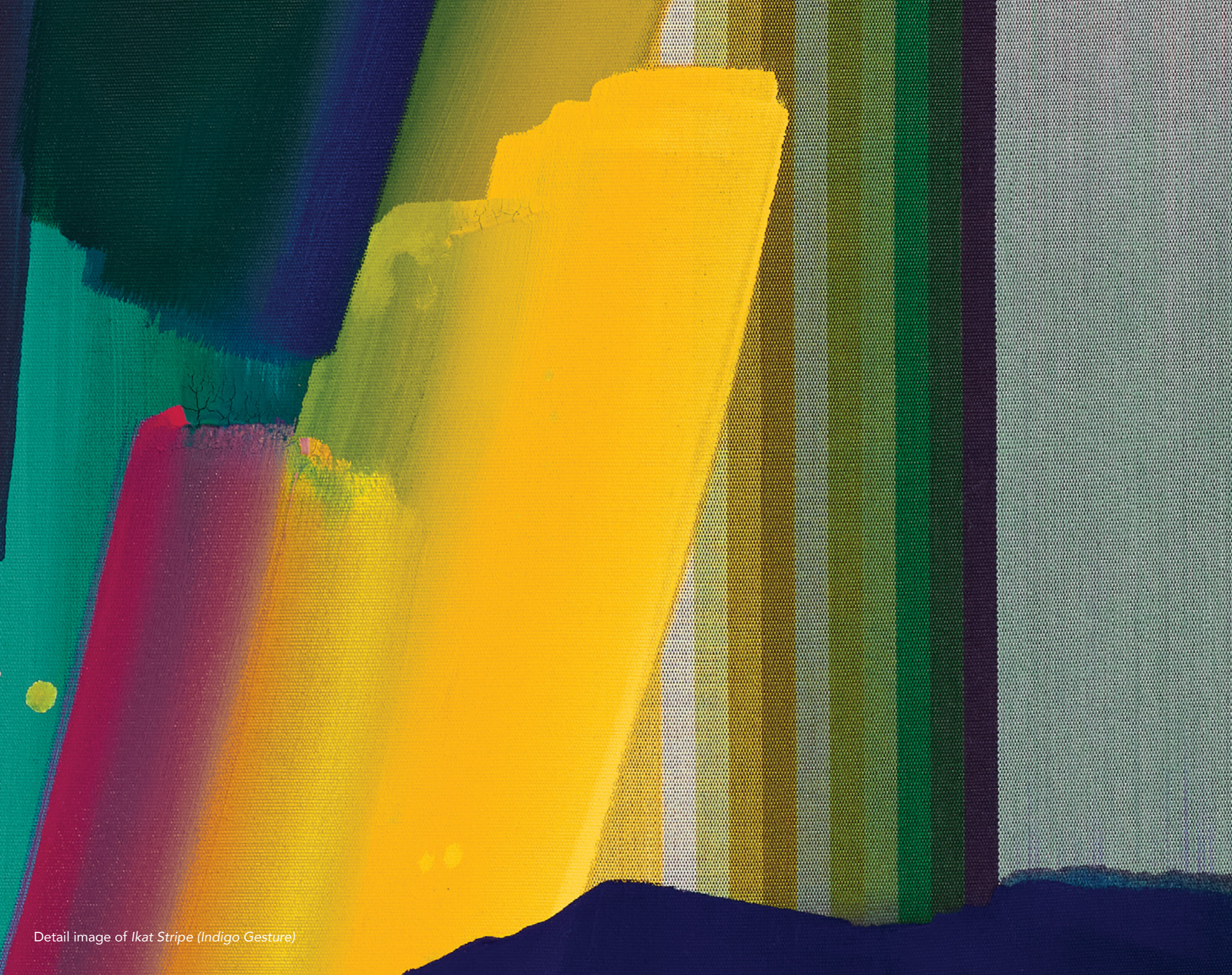




Earthbound (After Japan), 2025
hand dyed and woven viscose with acrylic paint
29 1/2 x 23 5/8 in.
FG© 141879

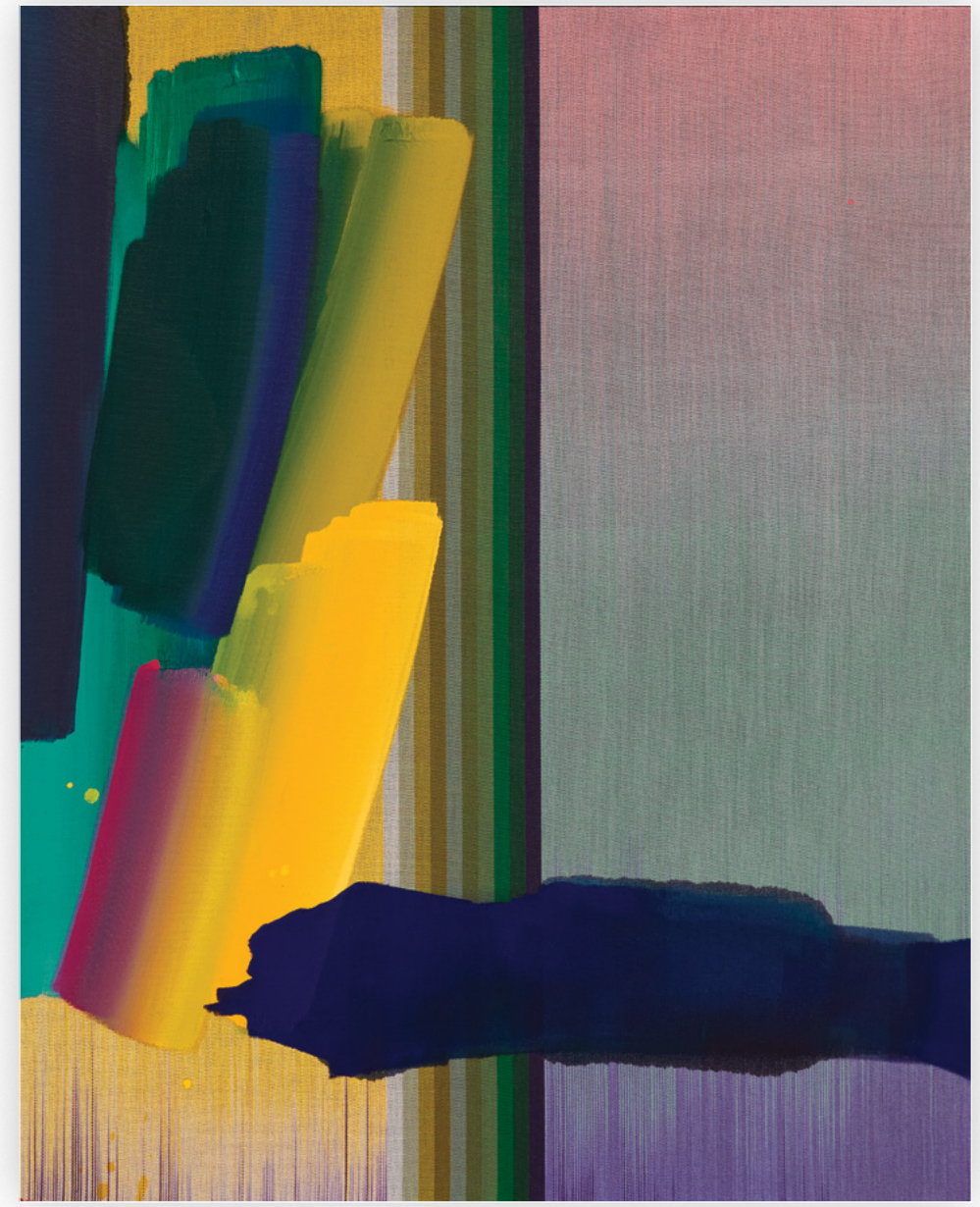


Mauve Thread Painting, 2025
hand dyed and woven viscose with acrylic paint
29 1/2 x 23 5/8 in.
FG© 141892
(detail image on front cover)



Detail image of *Ikat Stripe (Indigo Gesture)*

Ikat Stripe (Indigo Gesture), 2025
hand dyed and woven viscose with acrylic paint
29 1/2 x 23 5/8 in.
FG© 141887





Caligraphic (On Teal Ground), 2024
hand dyed and woven viscose with acrylic paint
15 3/4 x 15 3/4 in.
FG© 141909



Caligraphic (On Indigo Ground), 2024
hand dyed and woven viscose with acrylic paint
15 3/4 x 15 3/4 in.
FG© 141907

Gamboge Thread Painting, 2025
hand dyed and woven viscose with acrylic paint
23 5/8 x 23 5/8 in.
FG© 141884



Spectrum on Yellow Ground, 2025
hand dyed and woven viscose and acrylic paint
19 2/3 x 19 2/3 in.
FG© 141898



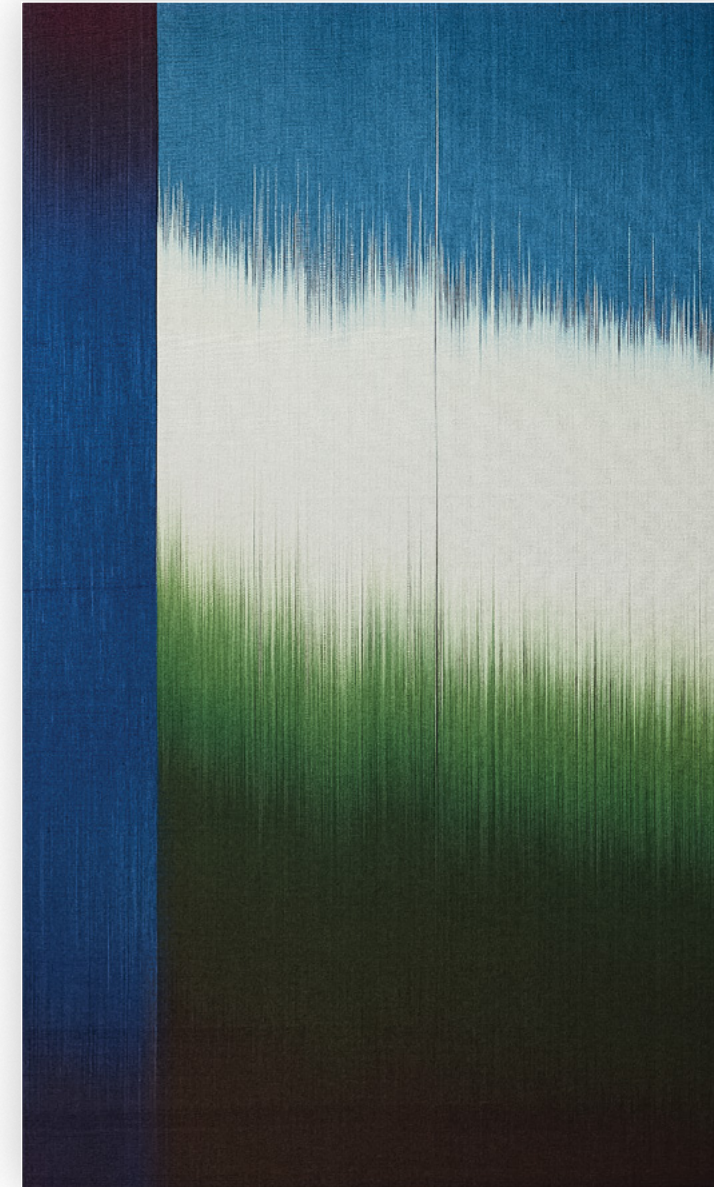


Thread Painting with Lemon Violet, 2025
hand dyed and woven viscose with acrylic paint
59 x 70 7/8 in.
FG© 141901



HAND DYED
WOVEN WORKS

Detail image of *Indigo Forest*



Indigo Forest, 2025
hand dyed and woven viscose | 39 3/8 x 23 5/8 in. | FG© 141888



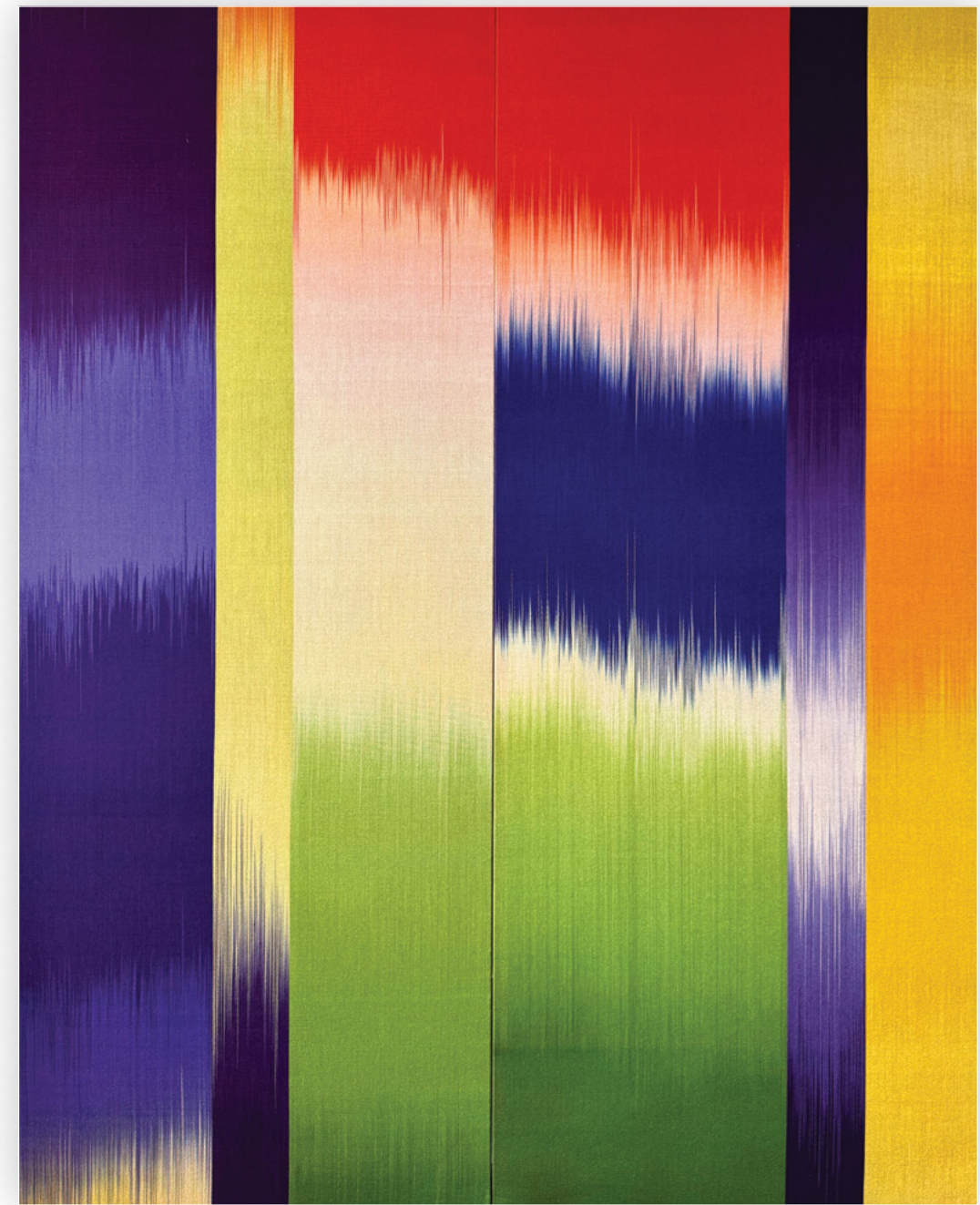
Midnight Moon Forest (After Japan), 2025
hand dyed and woven viscose | 39 3/8 x 23 5/8 in. | FG© 141893



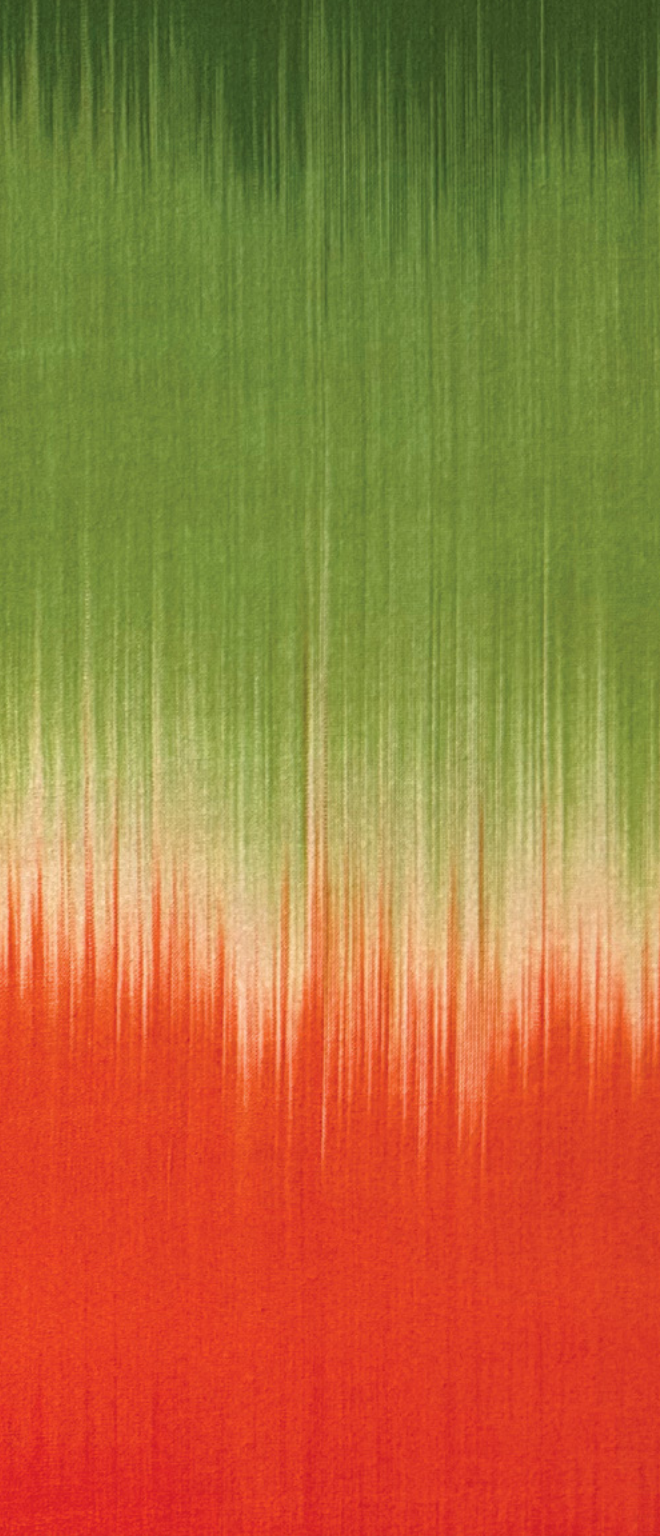
(left) *Ikat Drawing with Yellow and Violet*, 2025
hand dyed and woven viscose with pigment dye
23 5/8 x 31 1/2 in.
FG© 141886

(right) *Aubergine Indigo Yellow Ikat Drawing*, 2025
hand dyed and woven viscose with pigment dye
15 3/4 x 15 3/4 in.
FG© 141905





Primary Colour, 2025
hand dyed and woven viscose
59 x 47 1/4 in.
FG© 141894



Mann uses the ancient ikat technique to modern effect: dip-dyeing threads into multiple colors, and then weaving them into abstract wall-based artworks reminiscent of Mark Rothko paintings. Influenced by the Bauhaus weavers, Mann finds that the loom's limitations channel her creativity into color. "I go into the dye lab and let the color come," she says. "It's a loose, expressive process."

– Rebecca Dalzell, *Interior Design Magazine*

Woven Ground with Red Yellow Purple, 2025
hand dyed and woven viscose
59 x 47 1/4 in.
FG© 141903





Detail image of *The Energy of Love*

WORKS ON CANVAS



The Energy of Love, 2023
acrylic on canvas
78 3/4 x 59 in.
FG© 141904



Falling Water, 2025
acrylic and liquid watercolour pigment on canvas
78 3/4 x 59 in.
FG© 141881



The Painted Veil, 2025
acrylic and liquid watercolour pigment on canvas
78 3/4 x 59 in.
FG© 141900



Ethereal Land, 2025
acrylic and liquid watercolour pigment on canvas
78 3/4 x 59 in.
FG© 141880
(detail image on back cover)





(left) **Sussex Landscape**, 2023
acrylic on canvas
47 1/4 x 59 in.
FG© 141899

(right) **Chasm**, 2025
acrylic on canvas with liquid watercolour pigment
59 x 47 1/4 in.
FG© 141910





Circadian Rhythm on view at the Tate Modern, London, UK

SELECTED SOLO EXHIBITIONS

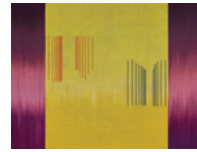
- 2025 *Significant Colour*, Findlay Galleries, New York, USA
- 2025 *Woven Gestures*, Ruthin Craft Centre, Denbighshire, UK
- 2024-2025 *Woven Colour*, Dovecot Studios, Edinburgh, UK
- 2024 *Mann and Women* - Presented by Gallery Lau, Goldberg Studios, Munich, Germany
- 2024 *A Danish Colour Odyssey*, Galleri Lene Bilgrav, Århus, Denmark
- 2024 *Thread Painting* - Presented by Taste Contemporary, Cromwell Place, London, UK
- 2023 *Unconscious Color*, Findlay Galleries, Palm Beach, USA
- 2022 *Thresholds II*, Findlay Galleries, New York, USA
- 2022 *Thresholds*, Findlay Galleries, Palm Beach, USA
- 2019-2024 *Circadian Rhythm* – Commissioned triptych, Tate Modern Gallery, London, UK
- 2019 *Bauhaus / Handwerk*, Gallery Lau, Munich, Germany
- 2019 *Albedo*, Old Street Gallery, London, UK
- 2011-2012 *The Architecture of Cloth – Colour and Space*, UK
A year long touring exhibition at Ruthin, Dovecot Studios, The Aram Gallery and Harley Galleries finishing at Gloucester Cathedral
- 2010 *Chromatic Minimalism*, Gallery Lau, Munich, Germany
- 2021 *Odd and Even – A Collection*, Presented by Taste Contemporary, Maison Louis Carré, Paris, France
- 2021 *2000 Years of Abstraction* with Paul Hughes Fine Arts, Maiden Bradley Chapel, Somerset, UK
- 2020 Art Genève – Art Fair with Taste Contemporary, Geneva, Switzerland
- 2019 Miart – Art Fair with Taste Contemporary, Milan, Italy
- 2019 Art Genève – Art Fair with Taste Contemporary, Geneva, Switzerland
- 2018 *The Most Real Thing* – New Art Centre, Roche Court, Salisbury, UK
- 2014 *Crafted* – The Royal Academy, London, UK
- 2013 *Modern Makers* – Presented by Sotheby's, Chatsworth House, Derbyshire, UK
- 2010 *Inspired By – The Legacy of Anni Albers*, Ruthin Craft Centre, Denbighshire, UK
- 2009 *Significant Colour*, The Aram Gallery, London, UK
- 2007 *Hue Line and Form* – Curated by Peter Ting, Contemporary Applied Arts, London, UK
- 2006 The London Art Fair 2005/6 and 2007 with Adrian Sassoon, London, UK
- 2005 SCOPE – New York, USA
- 2004 *Collect Art Fair for Contemporary Objects*, V&A Museum, London, UK
- 2003 *Ptolemy Mann-Textiles & Bob Crooks-Glass*, Contemporary Applied Arts, London, UK
- 1999 *Design Resolutions*, Royal Festival Hall, London, UK
- 1998 *Decorative Arts Today*, Bonhams, London, UK

SELECTED GROUP EXHIBITIONS

- 2025 *Fluid Threads with Jinya Zhao* – Presented by Taste Contemporary, Geneva, Switzerland
- 2025 *Colour*, Tristan Hoare Gallery, London, UK
- 2023 *Continuities: 2000 Years of Textile Arts in South America* with Paul Hughes Fine Arts, Lamb Gallery, London, UK
- 2022 *The Blue Hour*, Officinet, Copenhagen, Denmark
- 2022 *The Golden Hour*, Galleri Lene Bilgrav, Copenhagen, Denmark
- 2022 Art Genève – Art Fair with Taste Contemporary, Geneva, Switzerland



Scarlet Minimalism, 2025
hand dyed and woven viscose
59 x 43 1/3 in.
FG© 141896



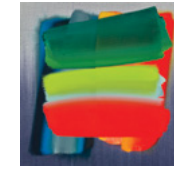
Ikat Drawing with Yellow and Violet, 2025
hand dyed and woven viscose with pigment dye
23 5/8 x 31 1/2 in.
FG© 141886



Indigo Forest, 2025
hand dyed and woven viscose
39 3/8 x 23 5/8 in.
FG© 141888



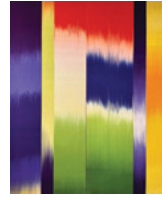
Spectrum on Burnt Orange Ground, 2024
hand dyed and woven viscose and acrylic paint
19 2/3 x 19 2/3 in.
FG© 141897



Caligraphic (On Blue Woven Ground), 2024
hand dyed and woven viscose with acrylic paint
15 3/4 x 15 3/4 in.
FG© 141906



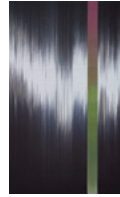
Mauve Thread Painting, 2025
hand dyed and woven viscose with acrylic paint
29 1/2 x 23 5/8 in.
FG© 141892



Primary Colour, 2025
hand dyed and woven viscose
59 x 47 1/4 in.
FG© 141894



Aubergine Indigo Yellow Ikat Drawing, 2025
hand dyed and woven viscose with pigment dye
15 3/4 x 15 3/4 in.
FG© 141905



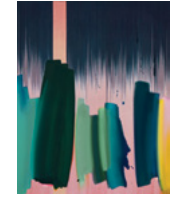
Midnight Moon Forest (After Japan), 2025
hand dyed and woven viscose
39 3/8 x 23 5/8 in.
FG© 141893



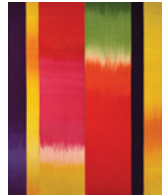
Spectrum on Yellow Ground, 2025
hand dyed and woven viscose and acrylic paint
19 2/3 x 19 2/3 in.
FG© 141898



Scarlet Level, 2024
hand dyed and woven viscose with acrylic paint
15 3/4 x 15 3/4 in.
FG© 141895



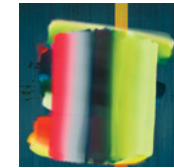
Indigo Mountain River, 2025
hand dyed and woven viscose with acrylic paint
29 1/2 x 23 5/8 in.
FG© 141890



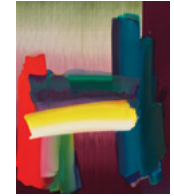
Woven Ground with Red Yellow Purple, 2025
hand dyed and woven viscose
59 x 47 1/4 in.
FG© 141903



Caligraphic (On Orange Woven Ground), 2024
hand dyed and woven viscose with acrylic paint
15 3/4 x 15 3/4 in. | FG© 141908



Caligraphic (On Teal Ground), 2024
hand dyed and woven viscose with acrylic paint
15 3/4 x 15 3/4 in.
FG© 141909



Earthbound (After Japan), 2025
hand dyed and woven viscose with acrylic paint
29 1/2 x 23 5/8 in.
FG© 141879



Gamboge Thread Painting, 2025
hand dyed and woven viscose with acrylic paint
23 5/8 x 23 5/8 in.
FG© 141884



Caligraphic (On Indigo Ground), 2024
hand dyed and woven viscose with acrylic paint
15 3/4 x 15 3/4 in.
FG© 141907



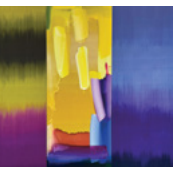
Ikat Stripe (Indigo Gesture), 2025
hand dyed and woven viscose with acrylic paint
29 1/2 x 23 5/8 in.
FG© 141887



Flow Thread Painting, 2024
hand dyed and woven viscose and acrylic paint
15 3/4 x 15 3/4 in.
FG© 141883

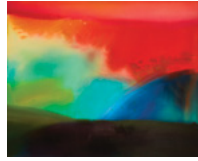


Japanese Ink, 2025
hand dyed and woven viscose with acrylic paint and pigment dye
15 3/4 x 15 3/4 in.
FG© 141891

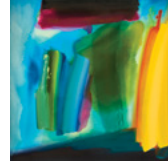


Thread Painting with Lemon Violet, 2025
hand dyed and woven viscose with acrylic paint
59 x 70 7/8 in.
FG© 141901

LIST OF
EXHIBITED
WORKS



Sussex Landscape, 2023
 acrylic on canvas
 47 1/4 x 59 in.
 FG© 141899



Floating Air, 2025
 acrylic Paint on Canvas
 39 3/8 x 39 3/8 in.
 FG© 141882



Chasm, 2025
 acrylic on canvas with liquid watercolour pigment
 59 x 47 1/4 in.
 FG© 141910



Indigo Love, 2025
 acrylic and liquid watercolour pigment on canvas
 78 3/4 x 59 in.
 FG© 141889



Ethereal Land, 2025
 acrylic and liquid watercolour pigment on canvas
 78 3/4 x 59 in.
 FG© 141880



Dark Fire, 2023
 acrylic and liquid watercolour pigment on canvas
 78 3/4 x 59 in.
 FG© 141878



Thread, 2025
 acrylic on canvas
 39 3/8 x 27 9/16 in.
 FG© 141902



Falling Water, 2025
 acrylic and liquid watercolour pigment on canvas
 78 3/4 x 59 in.
 FG© 141881



Green Portal, 2025
 acrylic on canvas
 27 4/7 x 39 3/8 in.
 FG© 141885



The Painted Veil, 2025
 acrylic and liquid watercolour pigment on canvas
 78 3/4 x 59 in.
 FG© 141900



The Energy of Love, 2023
 acrylic on canvas
 78 3/4 x 59 in.
 FG© 141904

For further information and pricing please contact our galleries

New York

(212) 421-5390

newyork@findlayart.com
 32 East 57th Street, 2nd Floor
 New York, New York 10022

Palm Beach

(561) 655-2090

palmbeach@findlayart.com
 165 Worth Avenue
 Palm Beach, Florida 33480

WWW.FINDLAYGALLERIES.COM



FINDLAY GALLERIES

THREE CENTURIES IN ART

Copyright © October 2025, Wally Findlay Galleries International, Inc. All rights reserved. No part of the images or text in this catalogue may be duplicated without permission of Findlay Galleries. Prices and availability of artwork featured in this catalogue are subject to change without notice.