

An abstract painting by Simeon Chagall. The composition is dominated by a large, textured blue area at the top, which appears to be a sky or a distant landscape. Below this, there are several distinct rectangular blocks of color: a red block on the left, a green block in the center, and a larger red block at the bottom. The bottom section also features some white lines that suggest a fence or a structure. The overall style is characteristic of Chagall's work, with bold colors and visible brushstrokes.

SIMEON **BRAGUIN**

A GENTLE VISION

FINDLAY GALLERIES



FINDLAY GALLERIES

T H R E E C E N T U R I E S I N A R T

SIMEON **BRAGUIN**

A GENTLE VISION

165 WORTH AVENUE, PALM BEACH, FLORIDA 33480 • (561) 655-2090
32 EAST 57TH STREET, 2ND FLOOR, NEW YORK, NEW YORK 10022 • (212) 421-5390

WWW.FINDLAYGALLERIES.COM

Braguin's color is intense and he composes interestingly. There is a kind of primitive quality here... Braguin gives evidence of having submitted himself to a parade of continental influences, though underlying all the experiments one seems to detect a native Slavic strain and an impulse toward individual expression.

Edward Jewell, New York Times, February 7th, 1933

SB 1998.13, 1989

acrylic on canvas

64 x 50 in.

FG© 134478





SB 1998.86, 1992 | acrylic on canvas | 48 x 60 in. | FG© 134428



SUNRISE SB 1998.27 | 1991 | acrylic on canvas | 64 x 50 in. | FG© 134443

SB 1998.90, 1994

acrylic on canvas

50 x 64 in.

FG© 134341

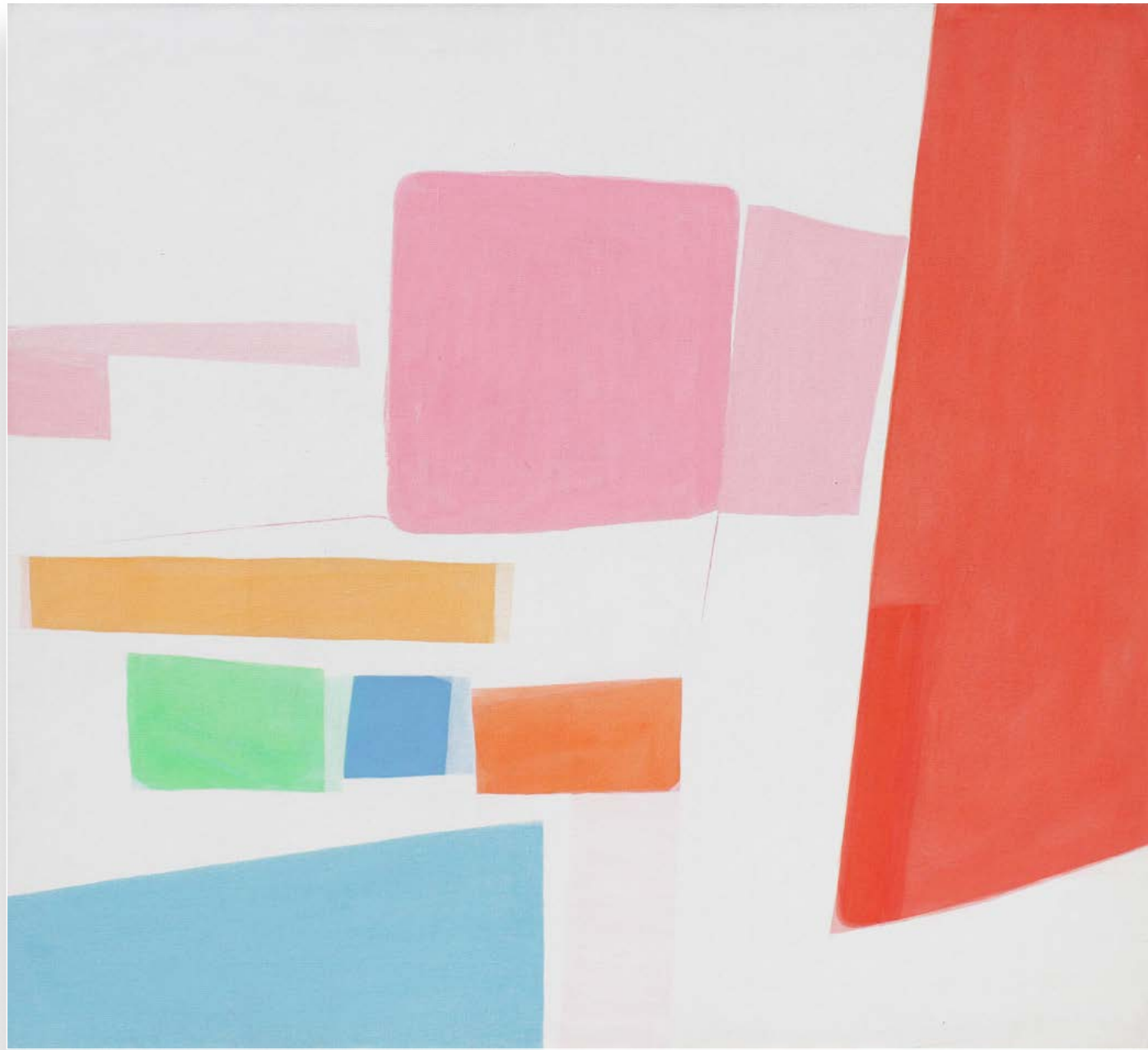




ABSTRACTION 42, 1996 | acrylic on canvas | 48 1/4 x 60 1/8 in | FG© 128141



SB 1998.66, 1981 | acrylic on canvas | 66 x 52 in. | FG© 134481



(right)
SB 1998.172, 1970
acrylic on canvas
28 x 20 1/8 in.
FG© 132895



(left)
C11, 1974
acrylic on canvas
60 1/2 x 55 1/4 in.
FG© 141496



SB 1998.111, 1976

acrylic on canvas

65 x 54 in.

FG© 134459





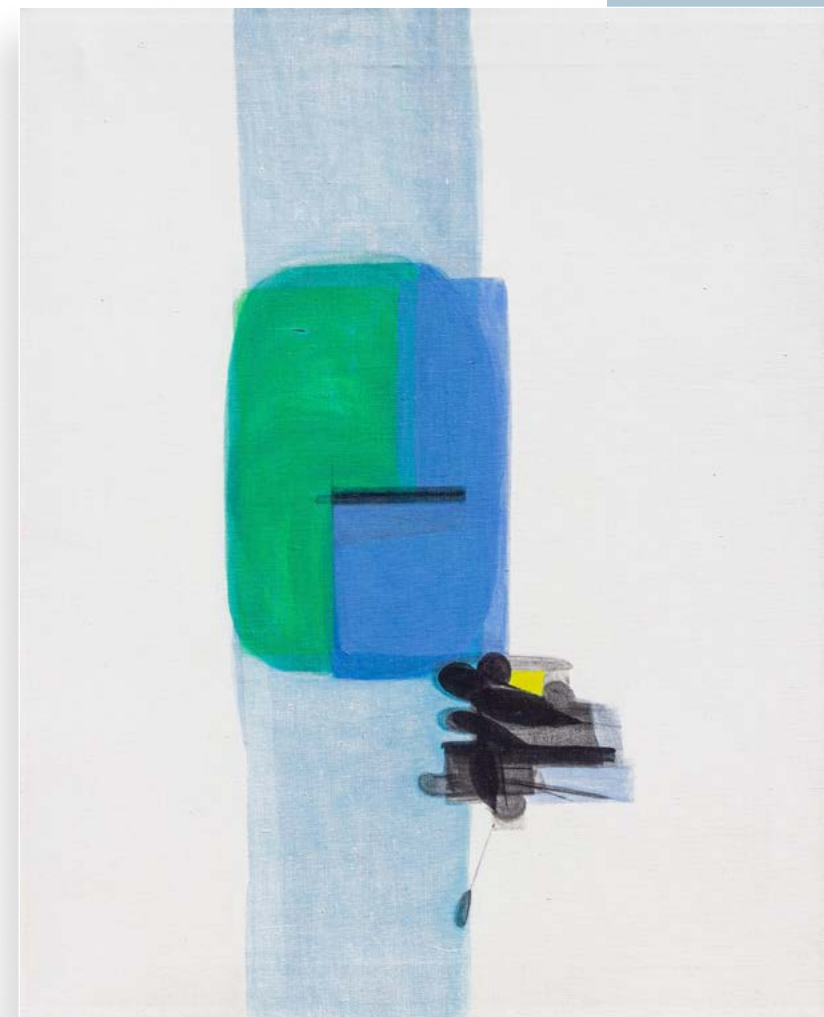
UNTITLED | acrylic on canvas | 20 1/4 x 26 1/4 in. | FG© 141494

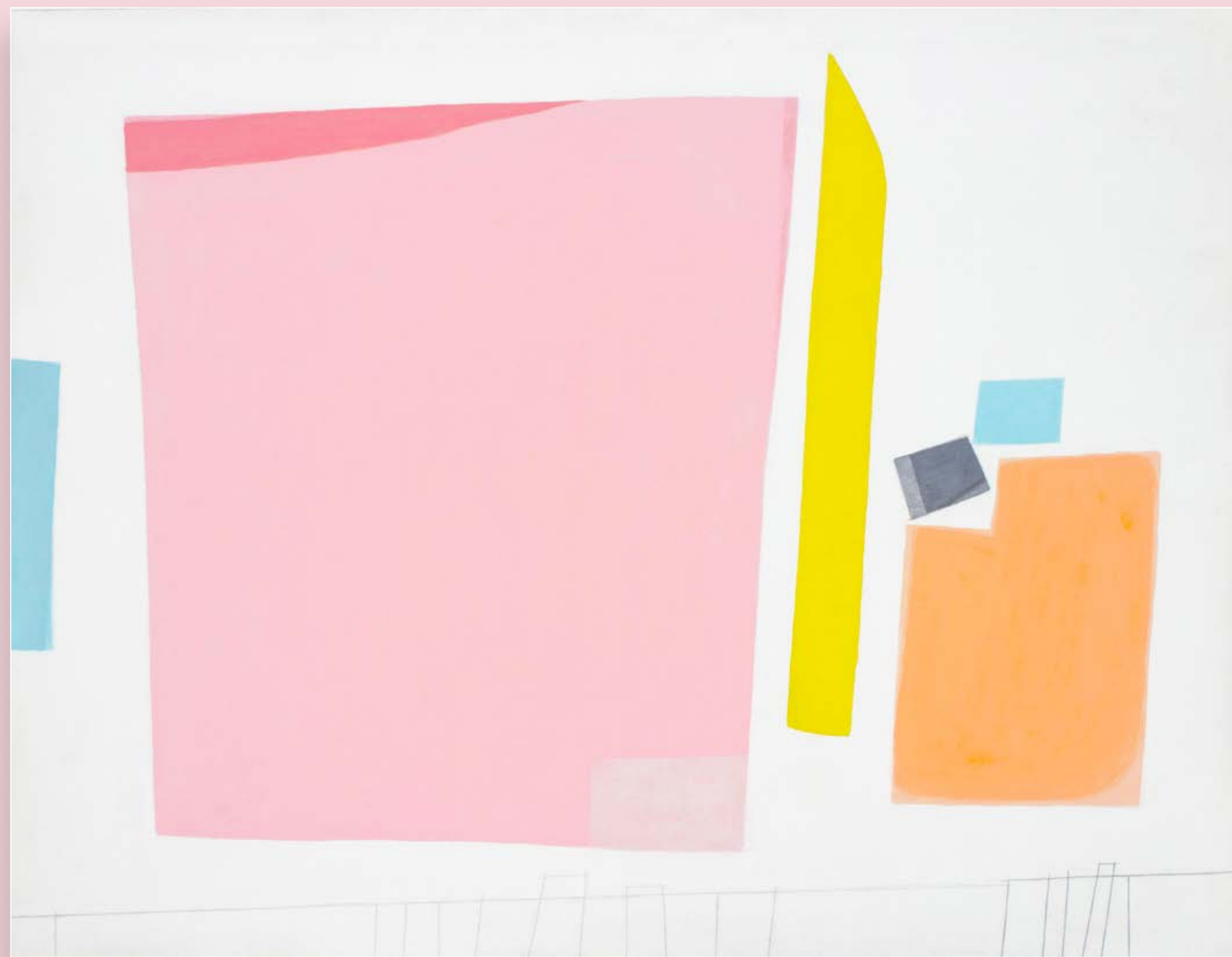
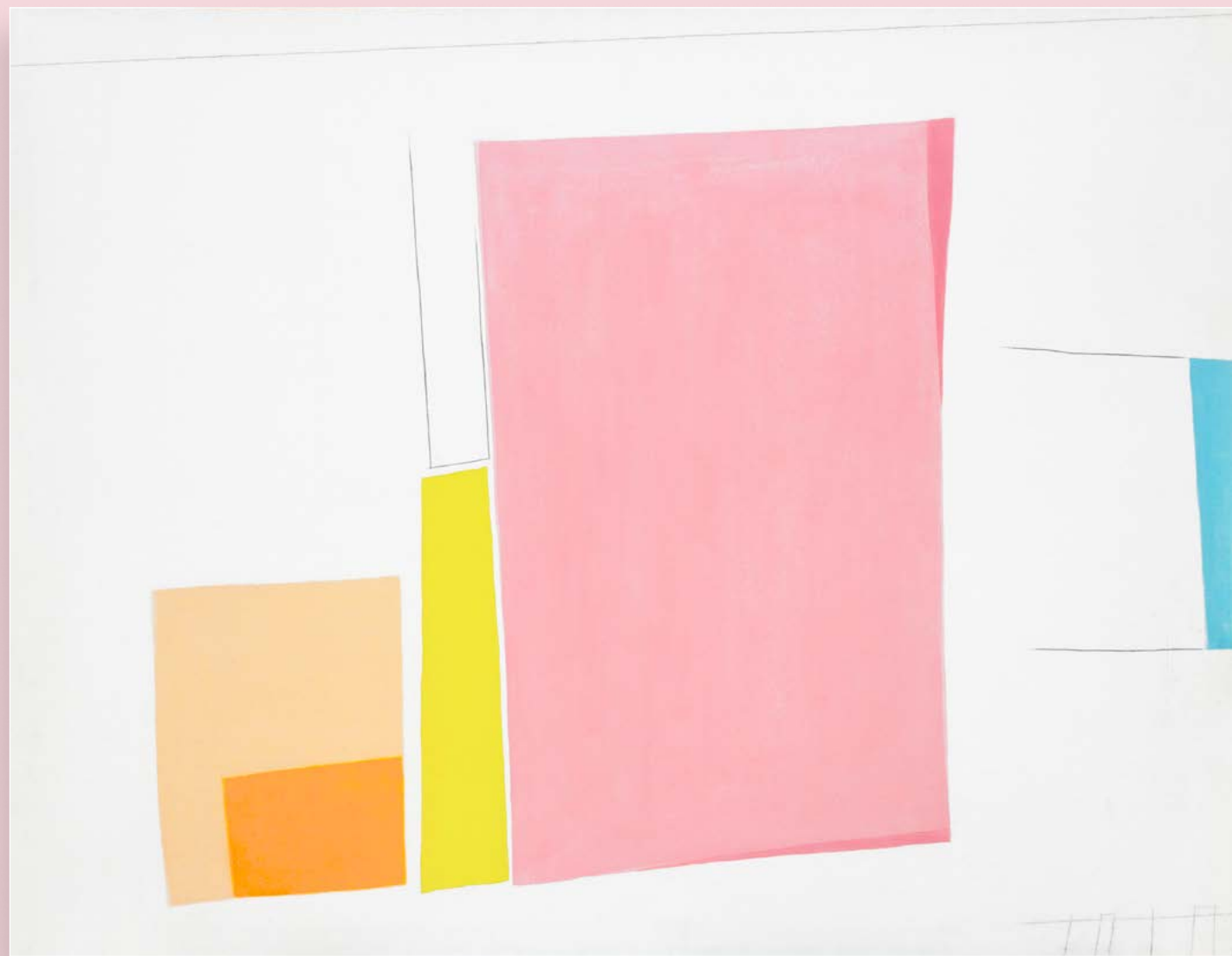
SB 1998.174, 1970

acrylic on canvas

25 x 20 in.

FG© 140479





1998.112A & 1998.112B (DIPTYCH) 1975 | acrylic on canvas | 50 x 130 in. | FG© 132394



SB 1998.93, 1992

acrylic on canvas

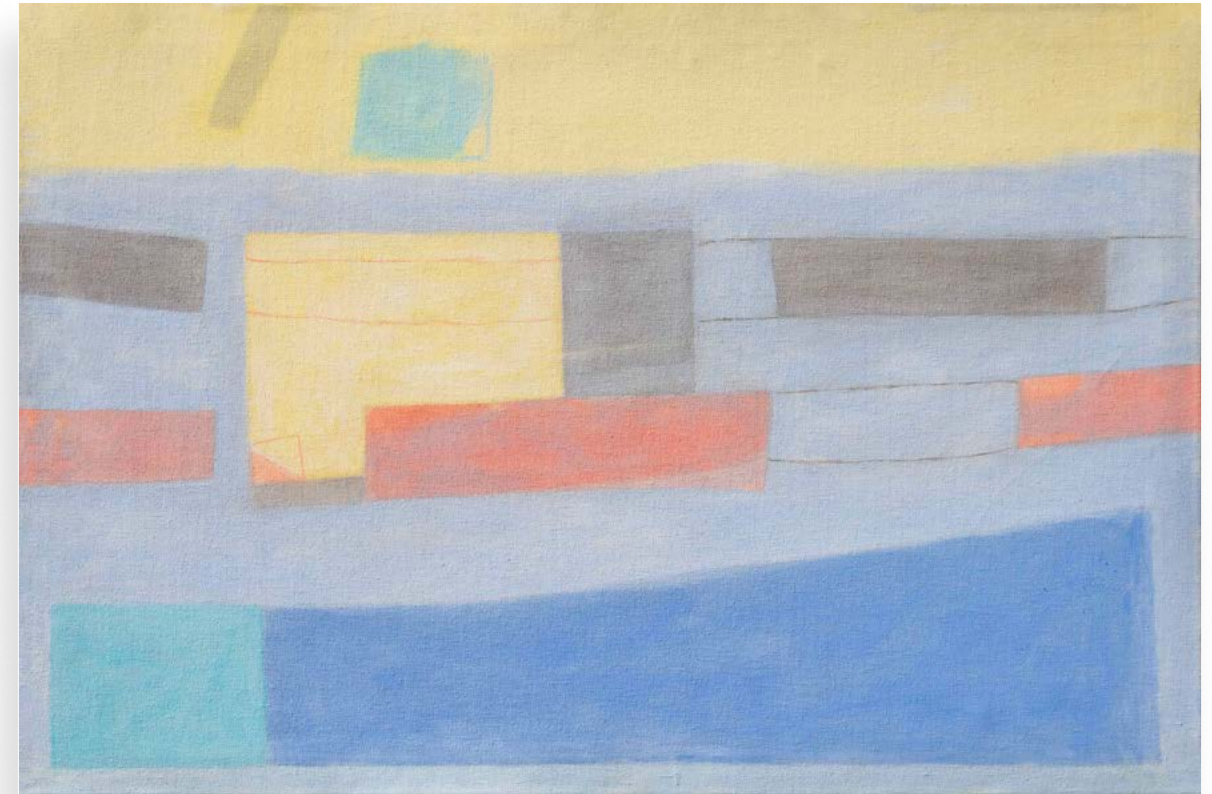
64 x 50 in.

FG© 134476





(left) SB 1998.114, 1974 | acrylic on canvas | 60 x 55 in. | FG© 134462



(above) SB 1998.183, 1986 | acrylic on canvas | 30 x 45 in. | FG© 134414



SB 1998.144, 1983 | acrylic on canvas | 26 x 30 in. | FG© 134386



SB 1998.61, 1984 | acrylic on canvas | 54 x 68 in. | FG© 134488



SB 1998.58, 1981 | acrylic on canvas | 68 x 54 in. | FG© 134454



FINDLAY GALLERIES

T H R E E C E N T U R I E S I N A R T

For further information and pricing of
these artworks please contact the gallery:

PALM BEACH

561.655.2090

palmbeach@findlayart.com

165 Worth Avenue

Palm Beach, Florida 33480

NEW YORK

212.421.5390

newyork@findlayart.com

32 East 57th Street, 2nd Floor

New York, New York 10022

W W W . F I N D L A Y G A L L E R I E S . C O M