

An impressionist landscape painting featuring a stone bridge with several arches crossing a wide river. In the foreground, a steep bank is covered with tall, slender cypress trees. The sky is filled with soft, horizontal bands of color, including yellows, blues, and purples, suggesting a hazy or atmospheric setting. The overall style is characterized by visible brushstrokes and a focus on light and color over fine detail.

Luminous Horizons

GROUP EXHIBITION



FINDLAY GALLERIES



FINDLAY GALLERIES

T H R E E C E N T U R I E S I N A R T

Luminous Horizons

GROUP EXHIBITION

165 WORTH AVENUE, PALM BEACH, FLORIDA 33480 • (561) 655-2090
32 EAST 57TH STREET, 2ND FLOOR, NEW YORK, NEW YORK 10022 • (212) 421-5390

WWW.FINDLAYGALLERIES.COM

*“Painting is by nature,
a luminous language”*

– Robert Delaunay

INTRODUCTION

Findlay Galleries proudly presents *Luminous Horizons*, an exhibition that celebrates the timeless allure and infinite inspiration found where earth meets sky.

This evocative collection features the work of ten distinguished artists— Tadashi Asoma, Jean Dufy, Isabelle de Ganay, Mary Sipp Green, André Hambourg, Constantin Kluge, Ronnie Landfield, Frederick McDuff, Charles Neal and René Sautin—each offering a unique vision of the landscape and its transcendent light.

Throughout art history, the horizon has symbolized hope, discovery, and the mysteries beyond. In *Luminous Horizons*, this enduring metaphor becomes a canvas for visual poetry, where shifting light and radiant color illuminate diverse terrains and atmospheric moods. Though these artists span generations and continents, they are united by a shared devotion to capturing the fleeting beauty where land, water, and sky converge.

From the sunlit coastlines of André Hambourg and the Impressionistic vistas of René Sautin to the ethereal color fields of Ronnie Landfield and the meditative skies of Mary Sipp Green, each work invites quiet reflection. The structured elegance of Charles Neal, the vibrant energy of Isabelle de Ganay, and the lyrical compositions of Jean Dufy enrich this journey further. Meanwhile, the tonal depth and emotional resonance in the works of Constantin Kluge, Tadashi Asoma, and Frederick McDuff offer a kaleidoscope of light’s transformative power.

As you explore this exhibition, we invite you to pause at each vista—to feel its mood, absorb its atmosphere, and reflect on its meaning. Together, these works speak to our universal longing for beauty, peace, and connection with the natural world—a timeless pursuit that continues to inspire.

ANDRÉ
HAMBOURG
(1909 - 1999)



A maree haute, temps rose, 1971 | oil on canvas | 4 3/4 x 8 11/16 in. | FG© 137414



A. Hambourg

Fin de jour sur la plage, 1963
oil on canvas
77/8 x 19 5/8 in.
FG© 138143



Tres beau temps sur la plage, 1976
oil on canvas
18 1/8 x 10 5/8 in.
FG© 141696



RONNIE
LANDFIELD

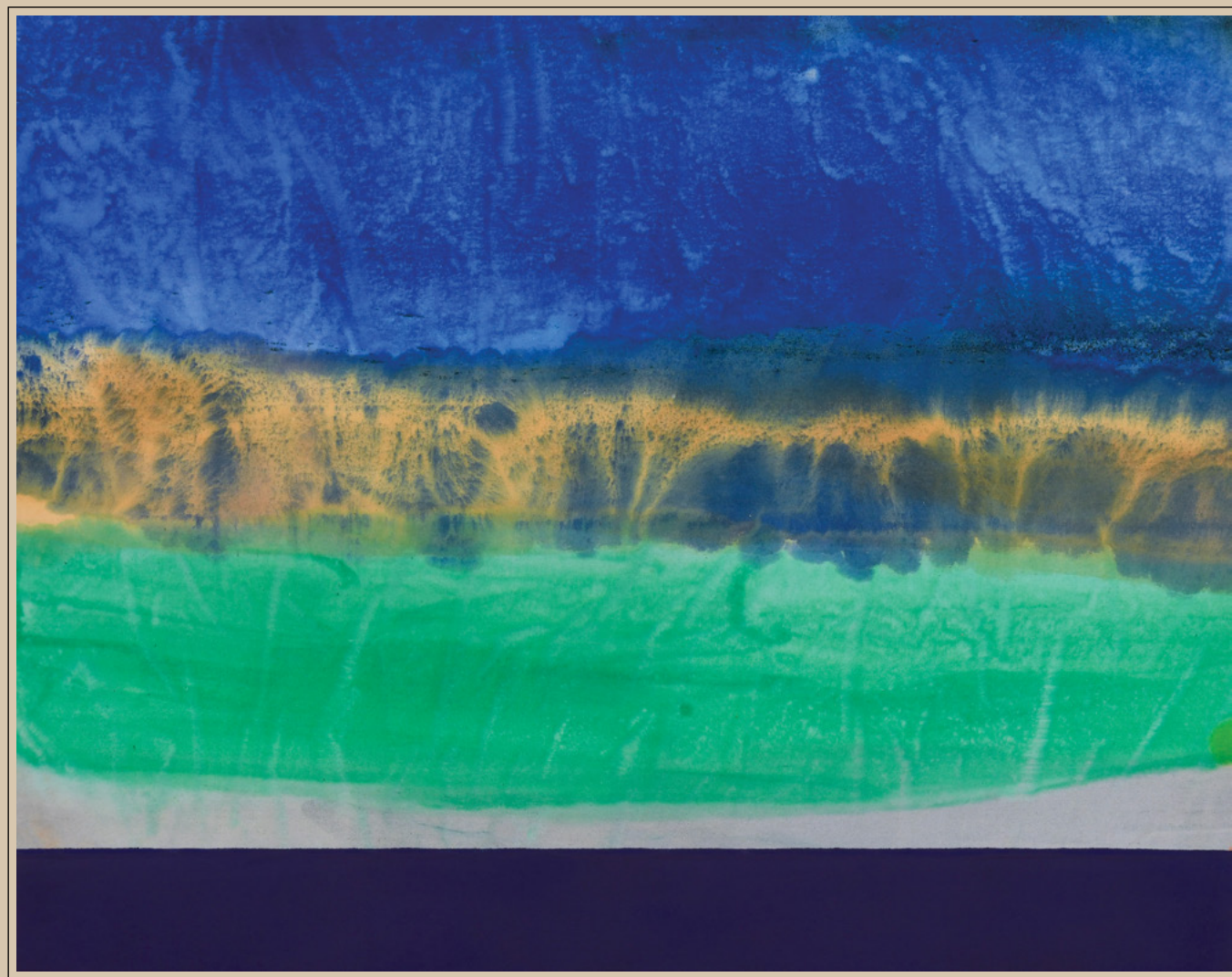
(b.1947)



Light of Freedom | acrylic on canvas | 30 x 51 in. | FG© 139821



Along the Way, 2008 | acrylic on canvas | 21 1/2 x 79 in | FG©139483



Across the Channel, 2022 | acrylic on canvas | 38 x 48 in | FG© 140821



Across the Rise, 2011 | acrylic on canvas | 21 1/4 x 28 in. | FG© 138289

JEAN
DUFY
(1888-1964)



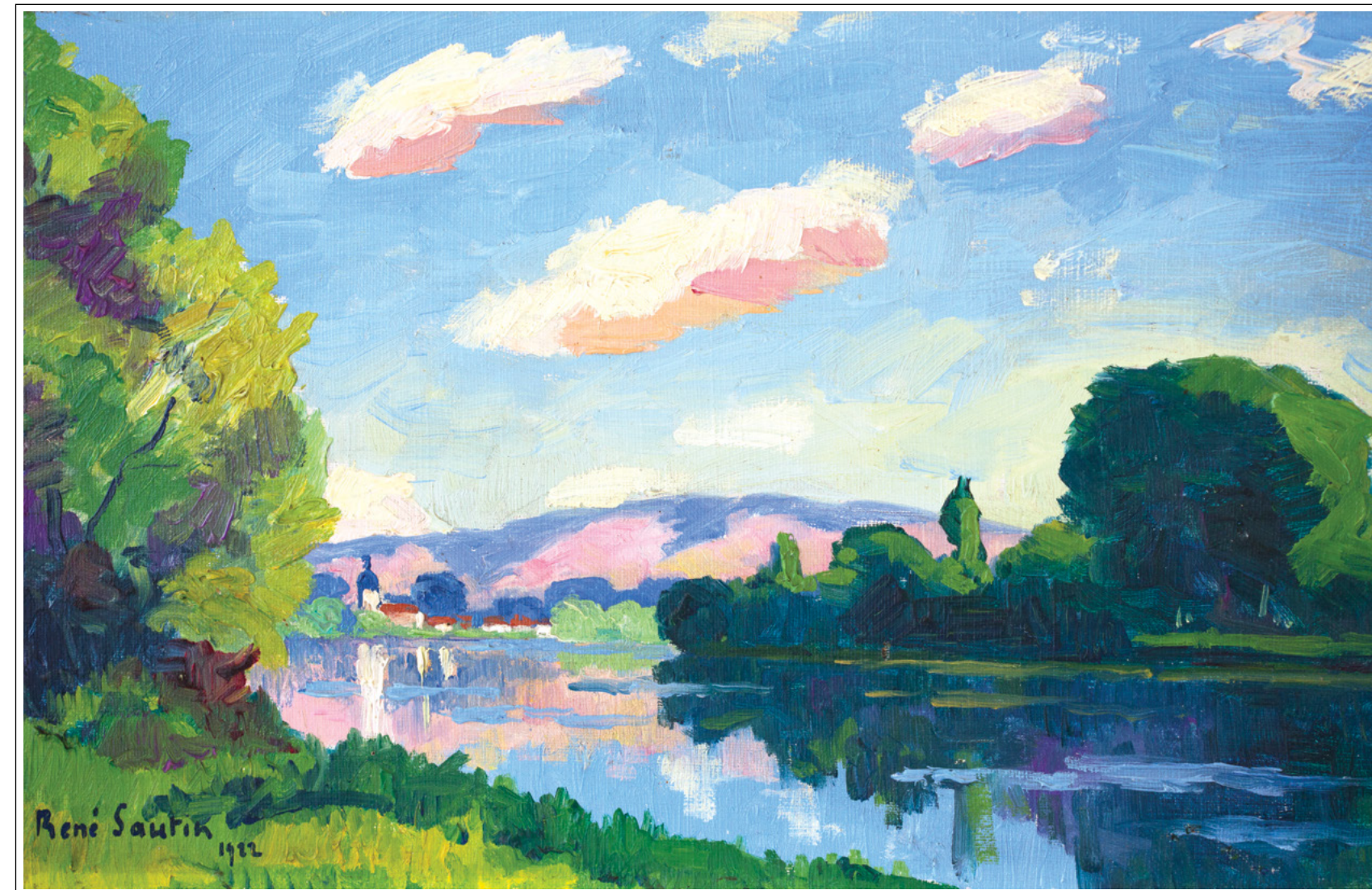
Le pont Boieldieu à Rouen, 1920 | watercolor on paper | 16 1/2 x 24 1/4 in. | FG© 141343



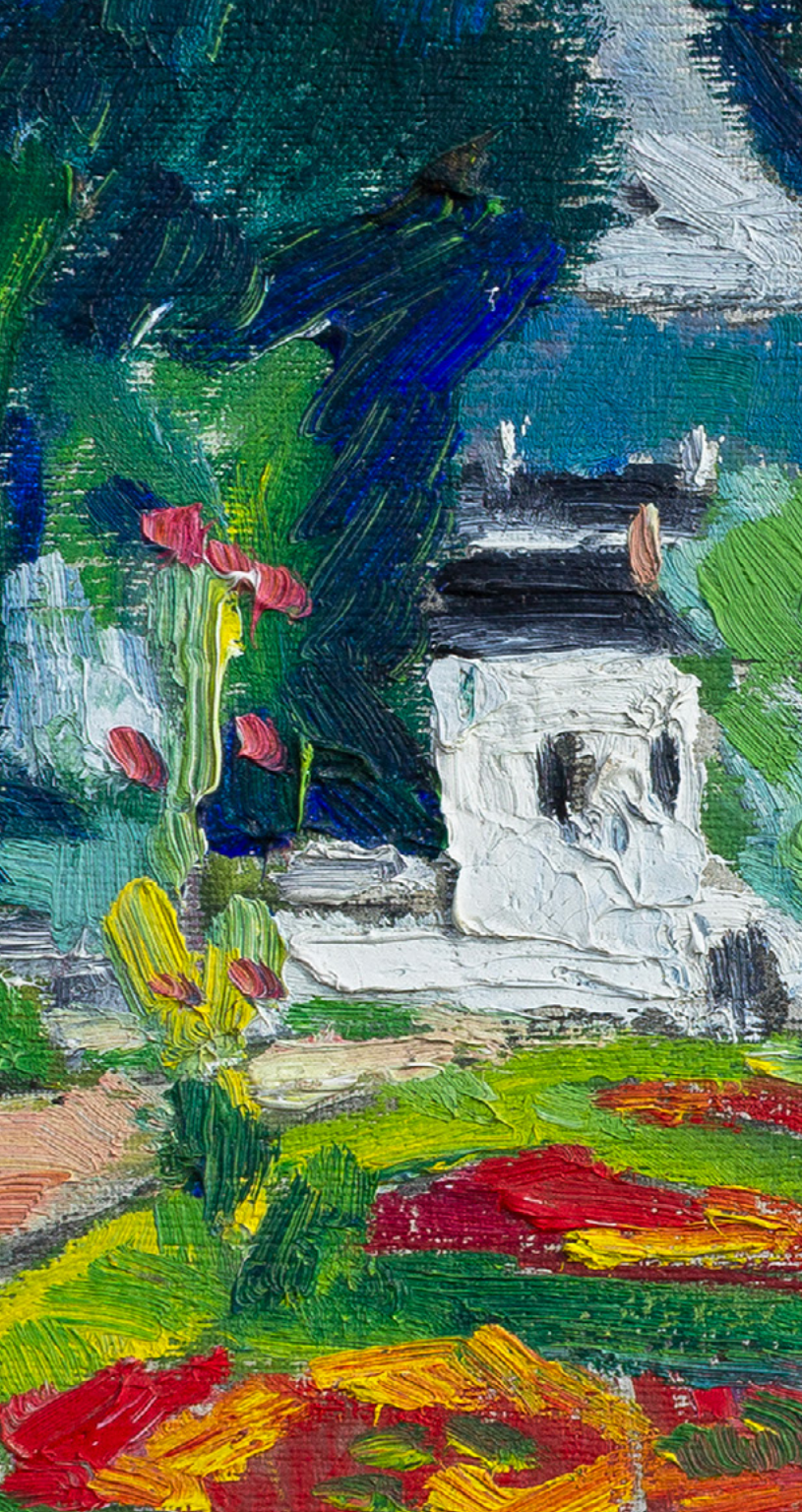
Place de la Concorde, Paris, 1955
aquarelle and gouache on paper
19 1/4 x 24 3/4 in.
FG© 141654



RENÉ
SAUTIN
(1881-1968)



La Seine a la Vacherie | oil on canvas | 18 1/8 x 10 5/8 in. | FG© 136958



Le Chemin de Halage
oil on cardboard
13 x 18 1/8 in.
FG© 138779



CONSTANTIN
KLUGE

(1912-2003)



Le quai des Orfèvres, 1979 | oil on canvas | 25 9/16 x 36 1/4 in. | FG© 141627



Le Carrefour Soufflot, 1983 | oil on canvas | 28 11/16 x 36 3/16 in. | FG© 135706



Le kiosque de La Madeleine, 1980 | oil on canvas | 32 x 45 3/4 in. | FG© 140466

A portrait of Mary Sipp Green, a woman with dark, curly hair, wearing a dark top and a necklace. The portrait is overlaid with a semi-transparent white box containing her name.

MARY
SIPP GREEN



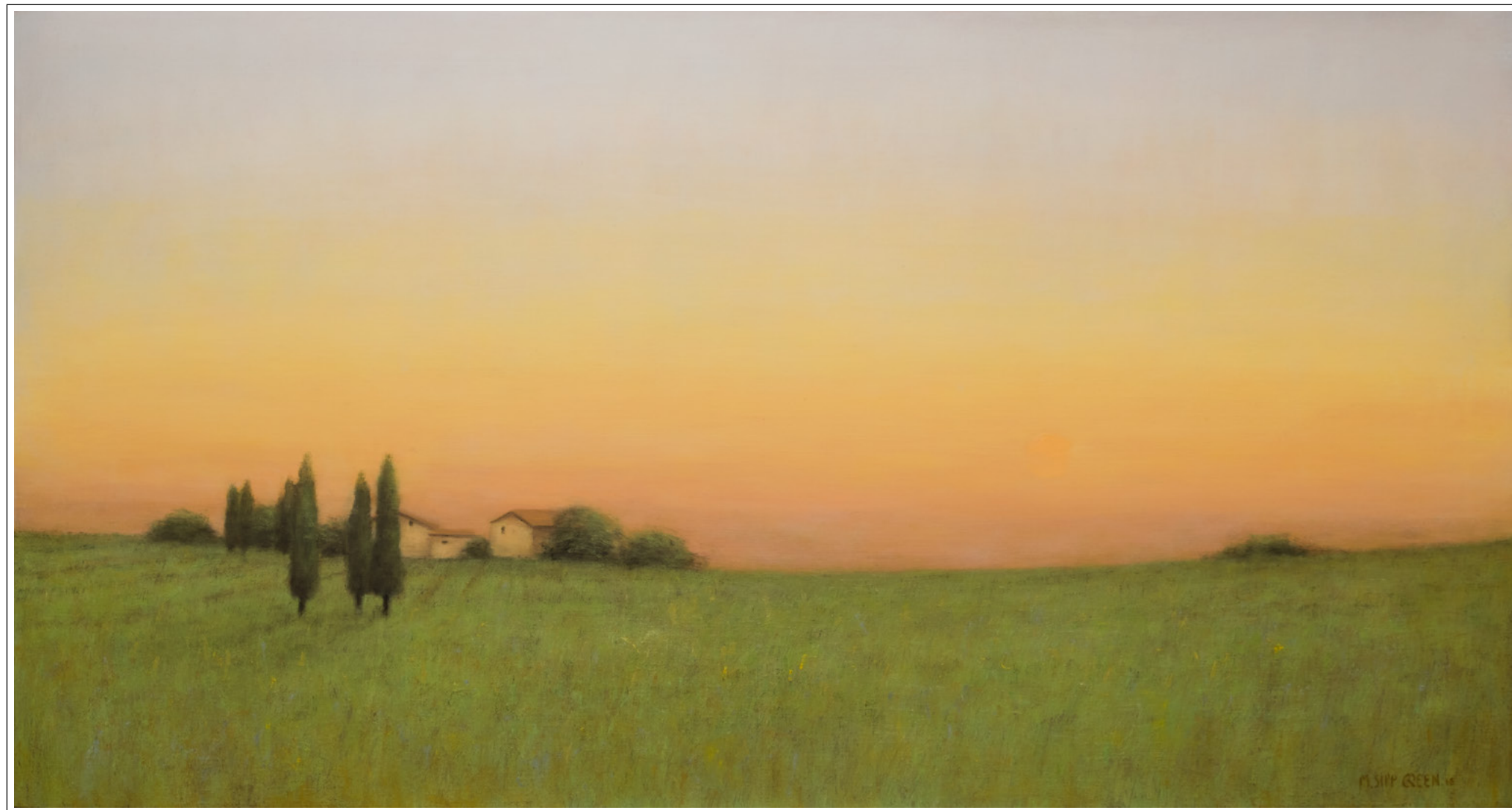
Romantic Twilight | oil on linen | 18 1/8 x 21 3/4 in. | FG© 130451



See full painting on next page



Early Morning on the Seine | oil on linen | 28 x 52 in. | FG© 136441

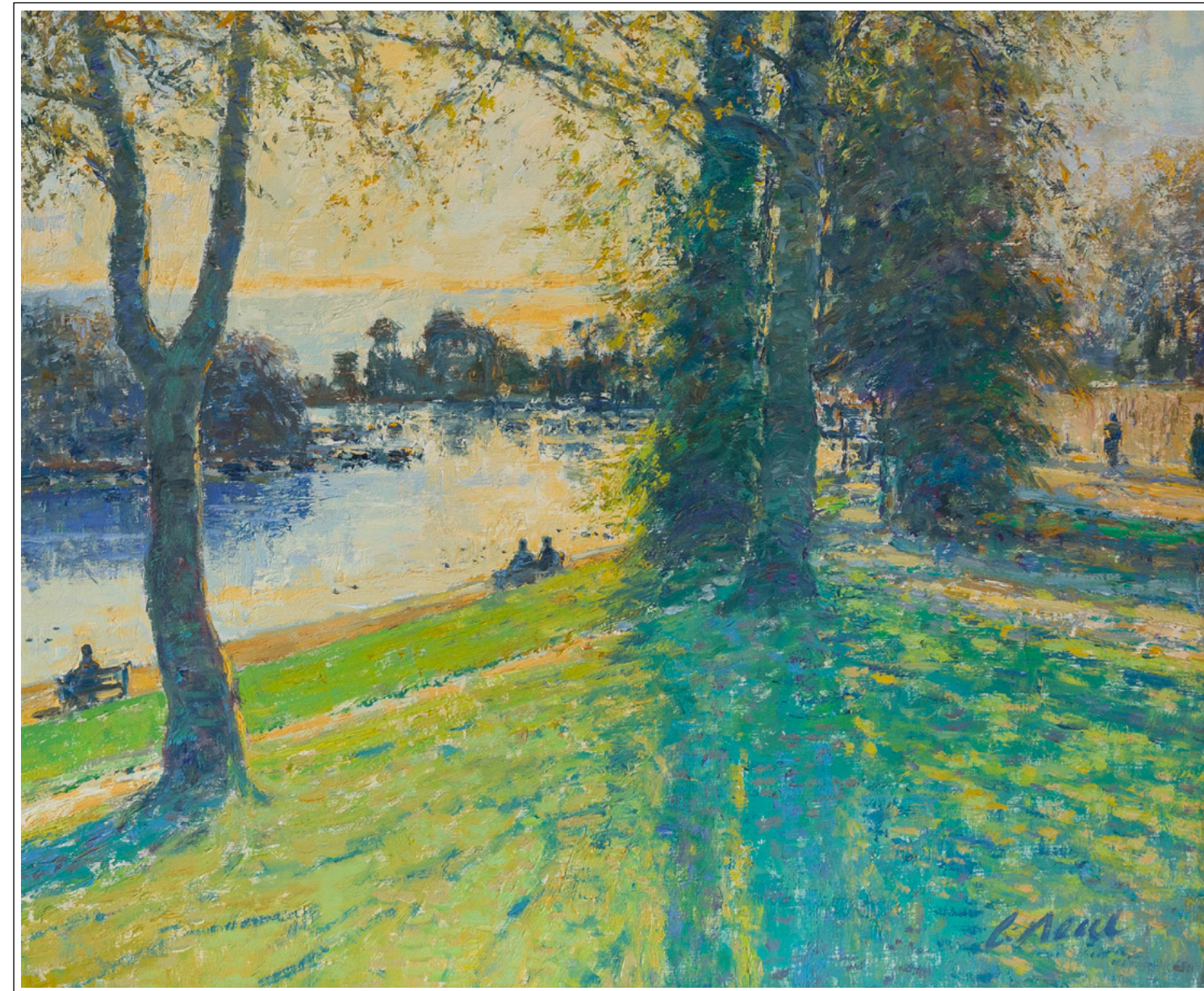


Afterglow Near Cortona, 2018 | oil on linen | 32 x 60 | FG© 138769



Fredonia | oil on panel | 10 1/4 x 10 in. | FG© 133757

CHARLES
NEAL
(b.1951)



The Thames at lower Sunbury, Surrey | oil on panel | 20 1/16 x 24 in. | FG© 137087



Queen Pool - November
oil on canvas
30 1/4 x 72 1/8 in.
FG© 136889



Dappled Light, The Terraced Gardens | oil on canvas | 48 1/8 x 60 1/8 in. | FG© 140873

TADASHI
ASOMA
(1923-2017)

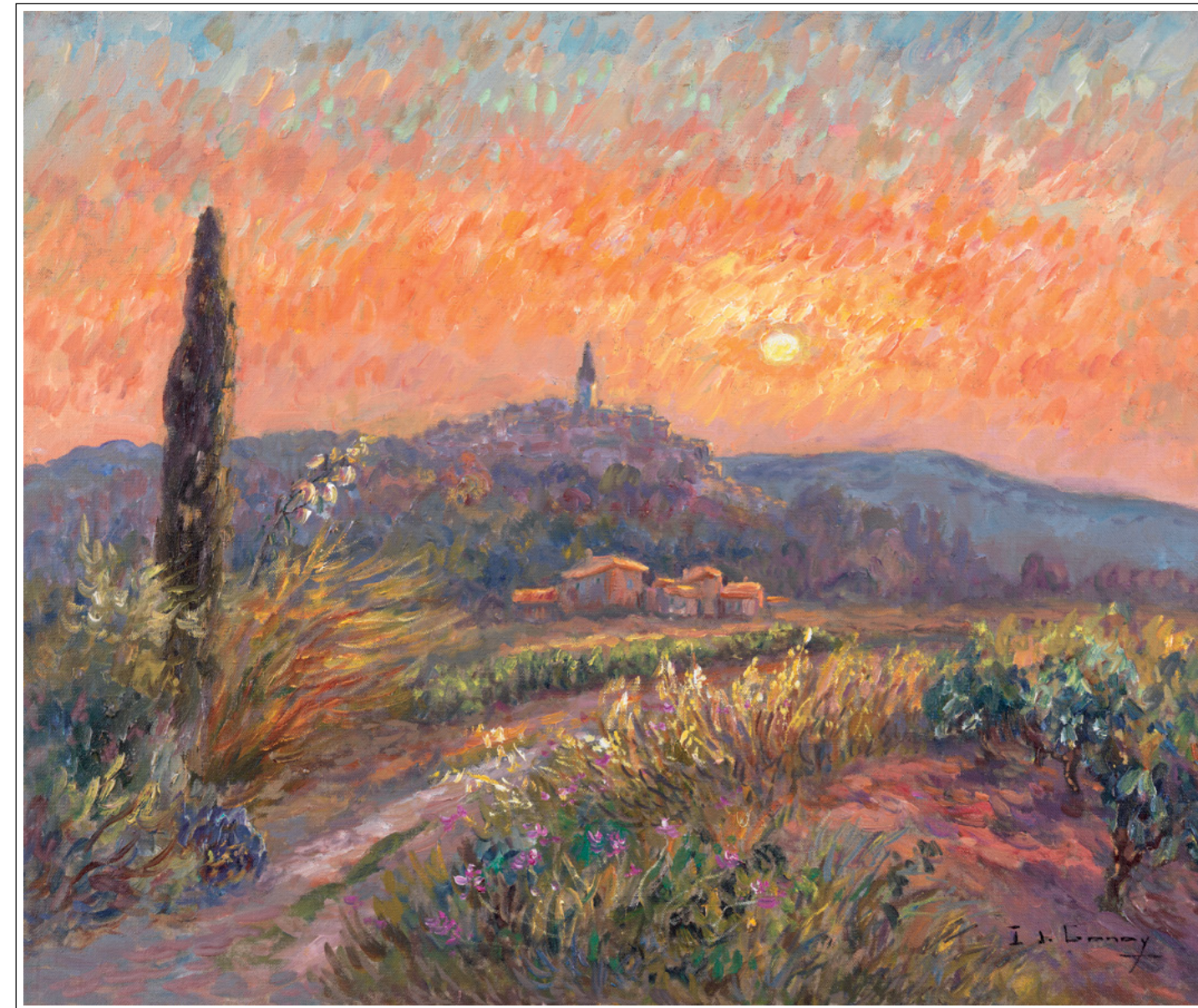


Incoming Boat, 1999-2000 | oil on canvas | 25 3/4 x 35 7/8 in. | FG© 139661



Reddened Woods | oil on canvas | 38 3/16 x 51 3/16 in. | FG© 141780

ISABELLE
DE GANAY



La Cadiere au Couchant | oil on canvas | 25 5/8 x 21 1/4 in. | FG© 135889



Lavandes et genets | oil on canvas | 25 9/16 x 21 1/4 in. | FG© 141218



Revest du Bion | oil on canvas | 25 9/16 x 31 7/8 in. | FG© 141235



Pont le soir à Paris
oil on canvas
35 1/16 x 45 11/16 in.
FG© 137829



Pont le soir à Paris | oil on canvas | 35 1/16 x 45 11/16 in. | FG© 137829

FREDERICK
McDUFF
(1931-2011)



Storm Clouds at Cancale | oil on panel | 14 1/4 x 18 1/4 in. | FG© 141754



Clouds at Dinard
oil on canvas
32 x 40 in.
FG© 141753





FINDLAY GALLERIES

T H R E E C E N T U R I E S I N A R T

For further information and pricing of
these artworks please contact the gallery:

PALM BEACH

561.655.2090

palmbeach@findlayart.com

165 Worth Avenue

Palm Beach, Florida 33480

NEW YORK

212.421.5390

newyork@findlayart.com

32 East 57th Street, 2nd Floor

New York, New York 10022

W W W . F I N D L A Y G A L L E R I E S . C O M