



FIGURES &  
EXPRESSION

FINDLAY  
GALLERIES



FINDLAY GALLERIES

T H R E E C E N T U R I E S I N A R T

# FIGURES & EXPRESSION

---

*Edgar Degas • Beltran Bofill • Hugo Grenville • Henri Matisse • Lluís Ribas  
Nicola Simbari • Vu Cao Dam • and many more*

32 EAST 57<sup>TH</sup> STREET, 2<sup>ND</sup> FLOOR, NEW YORK, NEW YORK 10022 • (212) 421-5390

165 WORTH AVENUE, PALM BEACH, FLORIDA 33480 • (561) 655-2090

WWW.FINDLAYGALLERIES.COM



# FIGURES & EXPRESSION

*Figures and Expression*, currently on view at Findlay Galleries in Palm Beach, invites viewers to explore the many ways artists have interpreted the human figure across time, geography, and sensibility. This curated selection reveals not only the emotional resonance and narrative richness of figurative art but also the broad stylistic spectrum through which the human form has been reimagined.

The exhibition features works by Beltran Bofill, Jean Pierre Cassigneul, Edgar Degas, Dimitry Gerrman, Hugo Grenville, Le Pho, Henri Matisse, Pablo Picasso, Lluís Ribas, Nicola Simbari, Michael Vollbracht, Peter Von Artens, and Vu Cao Dam—artists whose backgrounds span Europe, Asia, and the Americas, and whose techniques bridge classical discipline and modernist experimentation.

From Degas's refined impressionism and Matisse's lyrical distortions to the bold chromaticism of Simbari and the meditative elegance of Vu Cao Dam, *Figures and Expression* charts a journey through varying cultural lenses and aesthetic priorities. The result is a dynamic and multifaceted conversation on the human figure—one that celebrates both its universal significance and its boundless interpretive possibilities.

This expressive diversity finds its foundation in the artists' own philosophies. Henri Matisse once reflected, "What I am after, above all, is expression," a sentiment echoed throughout the exhibition. His refined yet radical use of line and color, paired with Picasso's bold distortions, reminds us that abstraction can deepen—rather than obscure—the emotional core of figurative art. In *Figures and Expression*, the variety of perspectives illuminate how the human form becomes a vessel—carrying not only the visible world, but also private histories, cultural memory, and emotional truth. Visit the gallery or contact your art consultant to enjoy and learn more about this significant exhibition.

# Lluís Ribas

*Cerdanya II*

oil on canvas

40 1/8 x 57 7/8 in.

FG@ 141529



EDGAR  
DEGAS



*Danseuse mettant son bas*  
Model Date 1896-1911, Cast 1919-1921  
Stamped with signature, stamped and No. with foundry mark  
“Degas 52/ O.A.A Hébrard, Cire Perdue”  
bronze with brown patina  
18 1/4 x 7 5/8 x 8 1/2 in.

Lluís Ribas

*Inga en Mallorca*  
oil on canvas  
57 1/2 x 35 1/16 in.  
FG@ 141065



# Henri-Matisse

## Henri Matisse

*Femme Allongee au peignoir, 1928*

pen & india ink/paper

19 x 26 in.

FG@ 131705

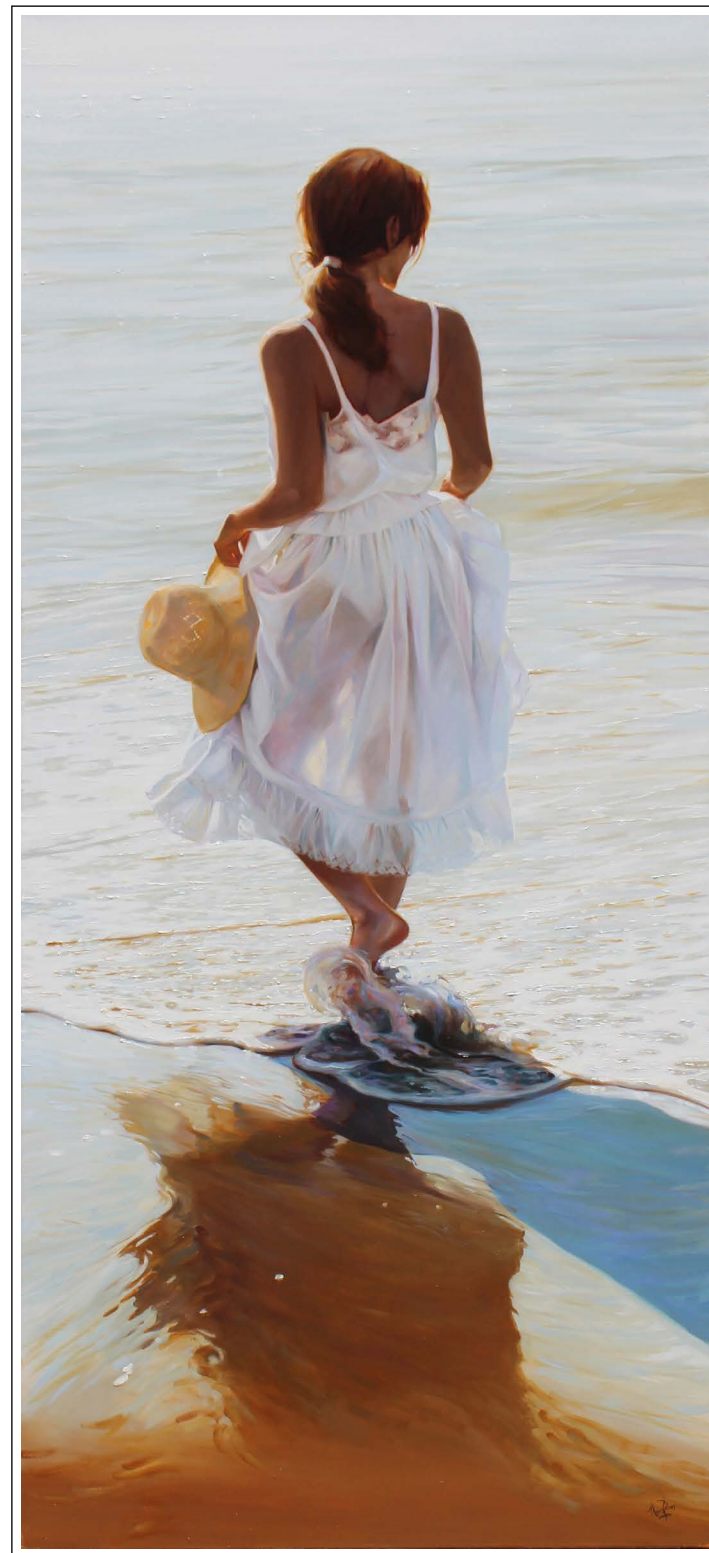
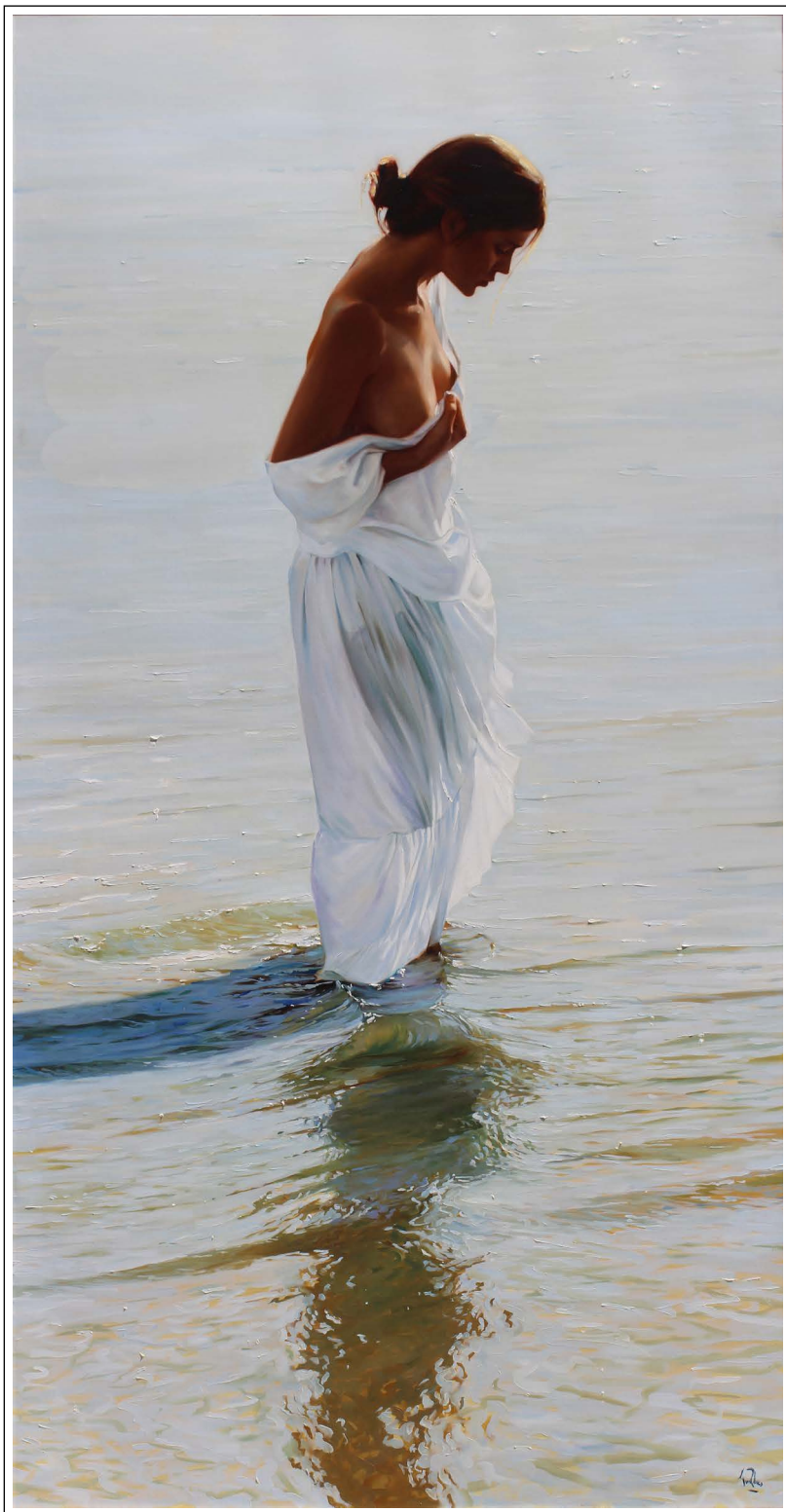
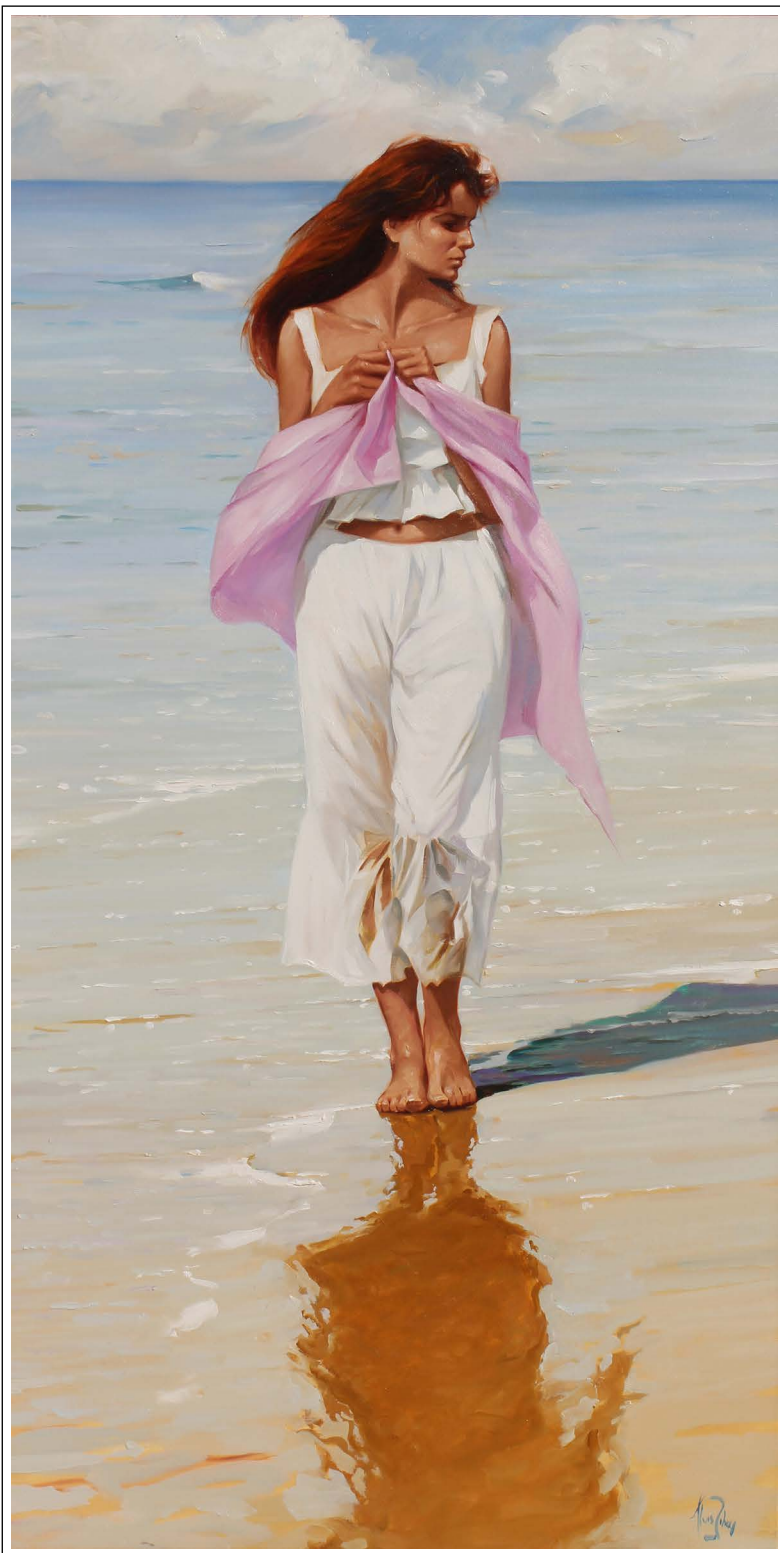




**Beltran Bofill** | *Tres figuras y flores*, 1978  
oil on canvas | 57 1/2 x 44 7/8 in. | FG@ 138272



**Lluís Ribas** | *Calma*  
oil on canvas | 39 3/8 x 39 3/8 in. | FG@ 141099



## Lluís Ribas

*Nuri* (left)

oil on canvas

39 3/8 x 19 5/8 in.

FG@ 133166

*Ninfa de la Luz* (center)

oil on canvas

76 3/4 x 38 3/16 in.

FG@ 139814

*Xell en Verano, Mallorca* (right)

oil on canvas

74 3/4 x 31 3/8 in.

FG@ 141066



**Peter von Artens** | *Adam*, 1995  
oil on canvas | 33 1/2 x 39 1/2 in. | FG@ 132220



**Nicola Simbari** | *Giovane Ragazza Nuda*, 1968  
oil on canvas | 31 1/4 x 35 1/2 in. | FG@ 136548



# Peter Von Artens

*King*, 1973

giclee on paper

33 x 42 in.

FG@ 127191

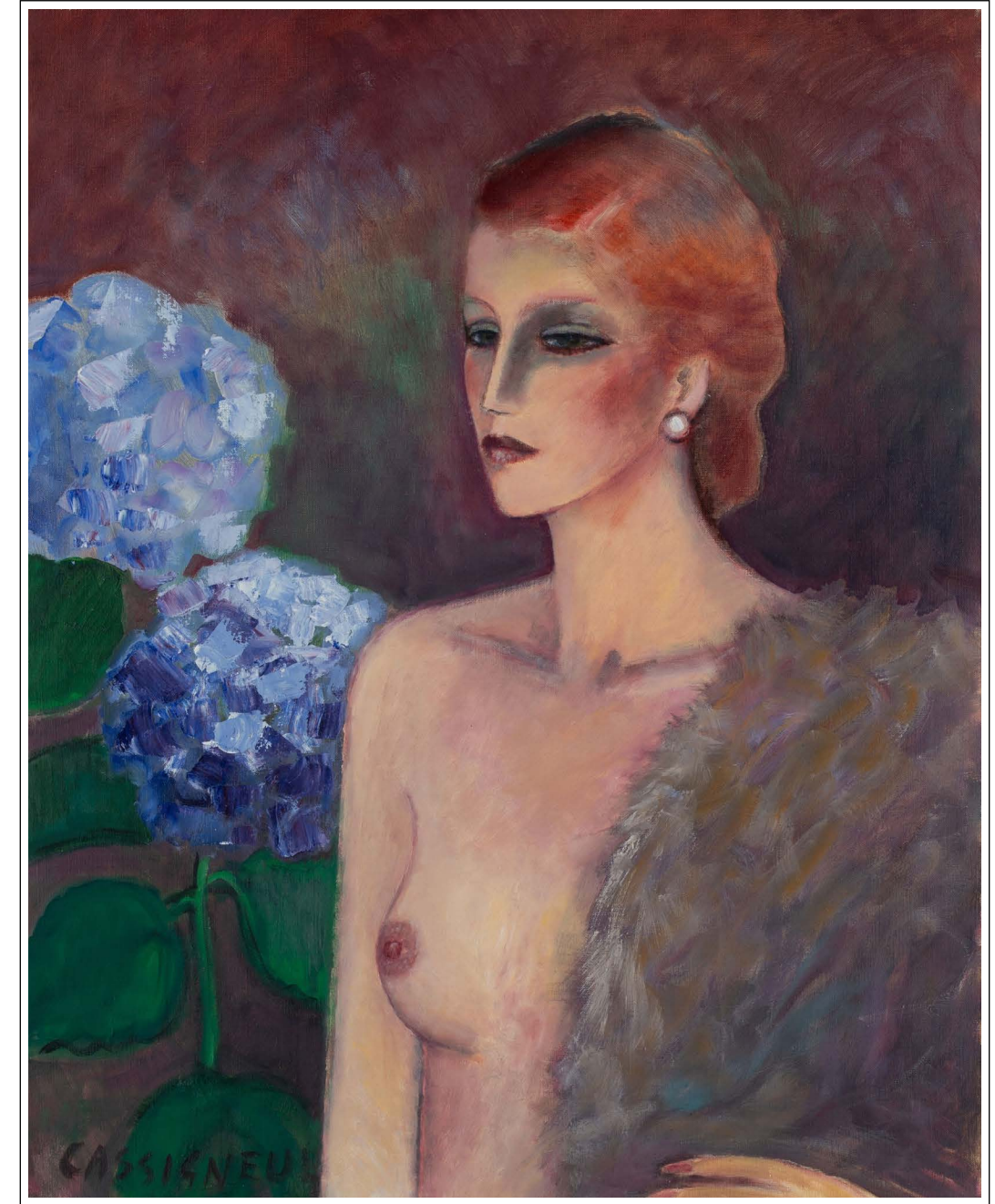


*Queen*, 1973

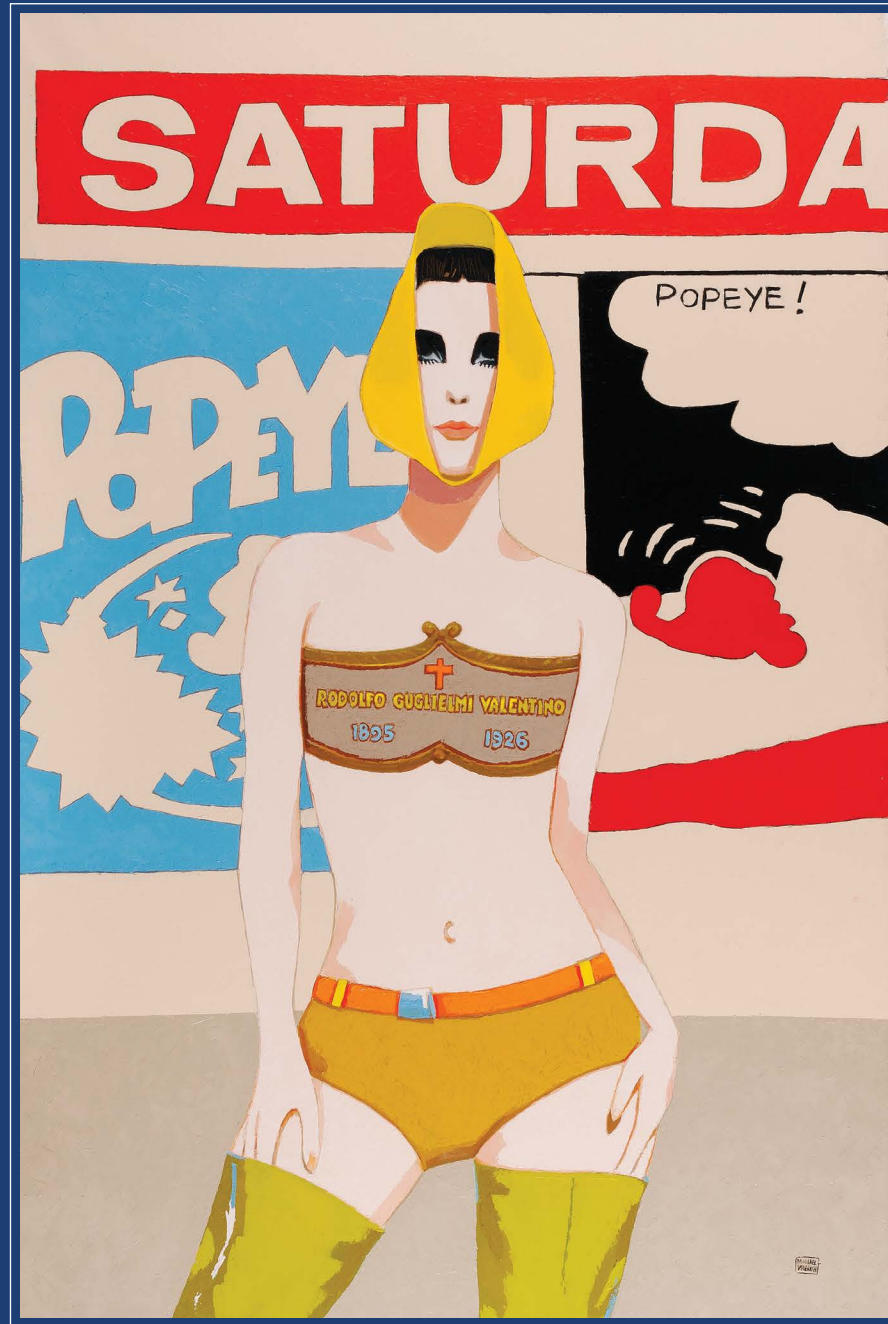
giclee on paper

33 x 42 in.

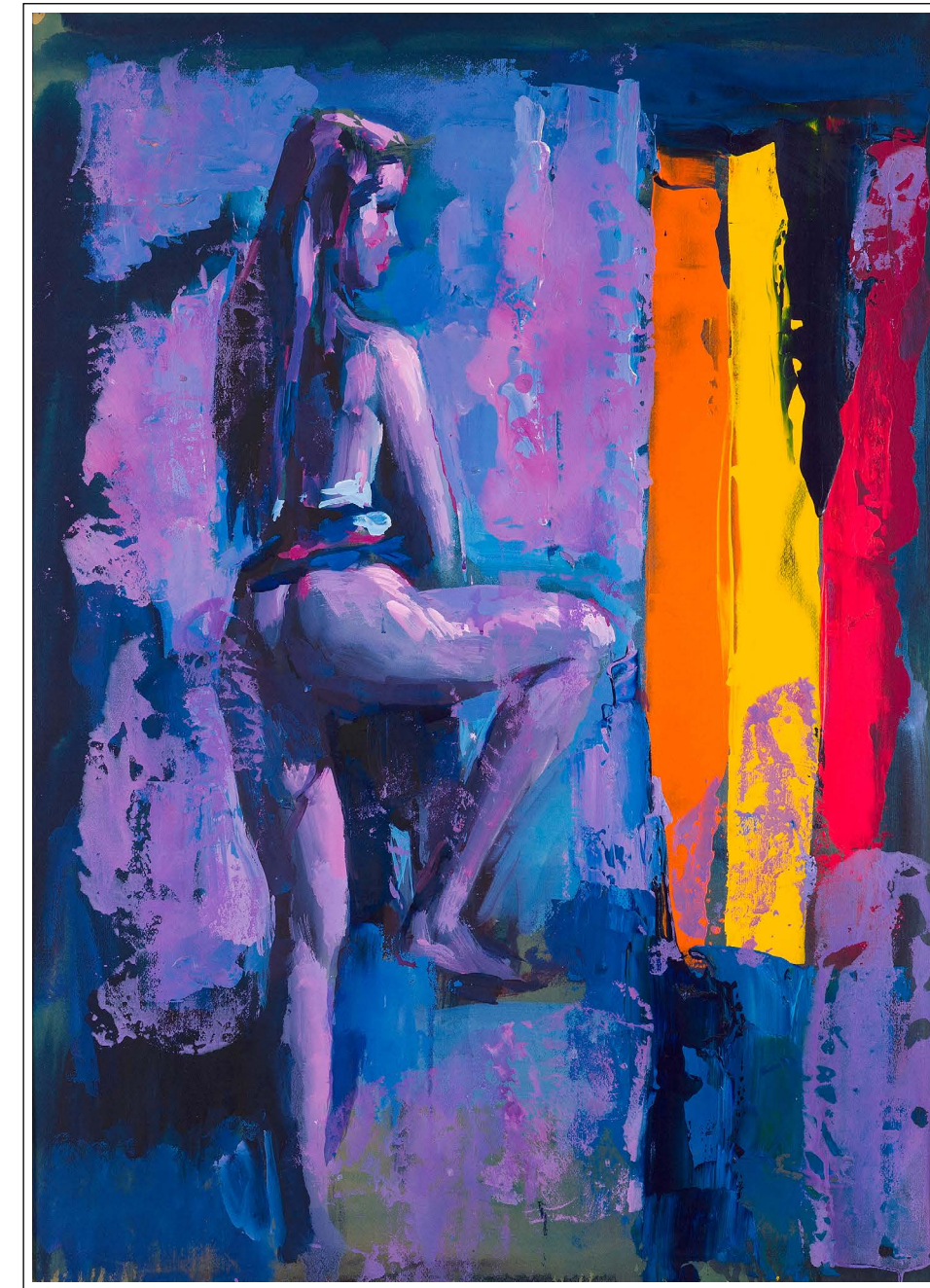
FG@ 127194



**Jean Pierre Cassigneul** | *L'hortensia bleu*, 1995  
oil on canvas | 31 7/8 x 25 9/16 in. | FG© 141653



**Michael Vollbracht** | *Rudi & Rudy*  
oil on canvas | 49 x 73 in. | FG© 132680



**Nicola Simbari** | *Interieur*, 1976  
oil on canvas | 39 1/8 x 27 3/8 in. | FG© 134843

# Michael Vollbracht

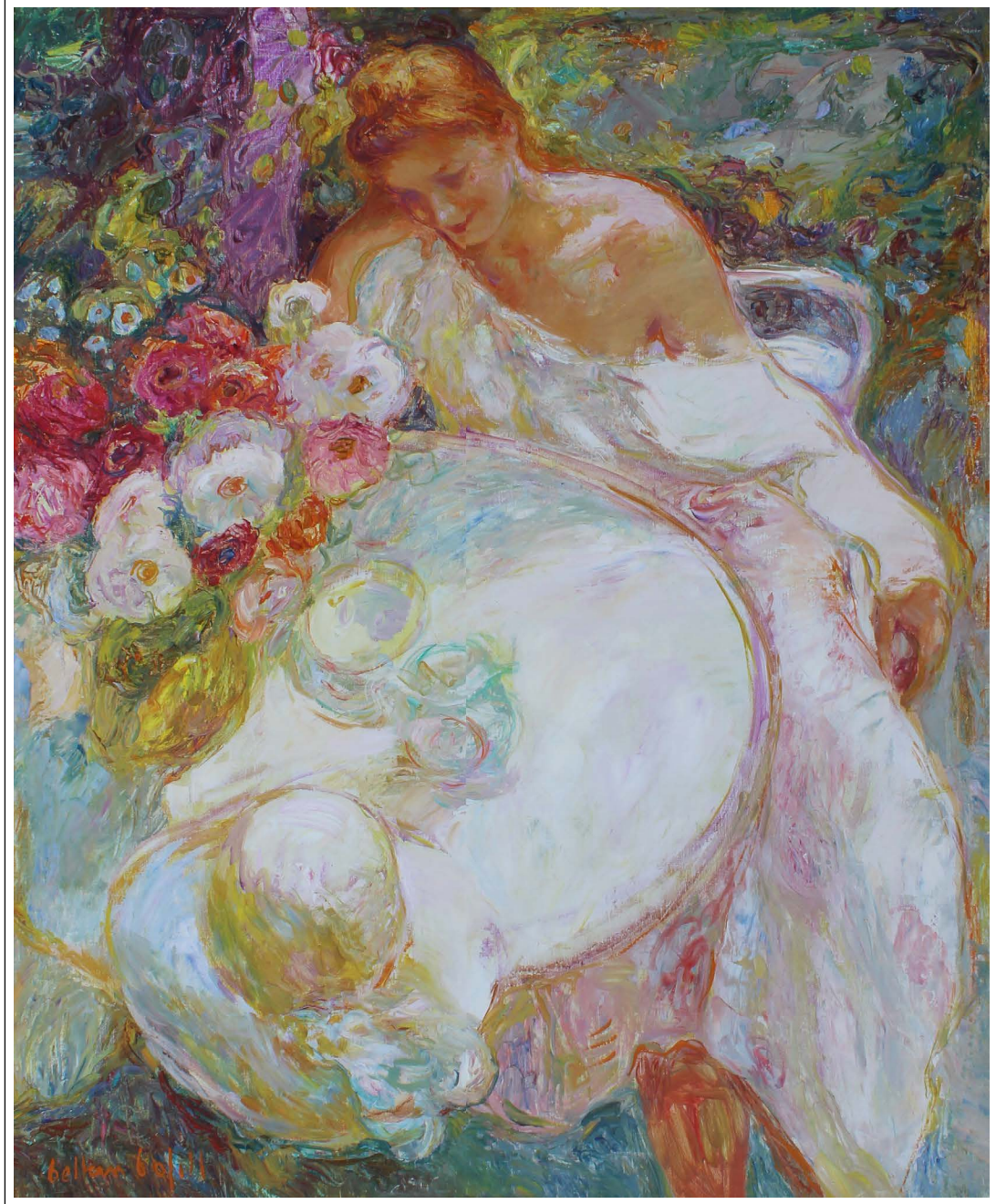
*Lindsay and Friends*

*oil on canvas*

*49 x 84 in.*

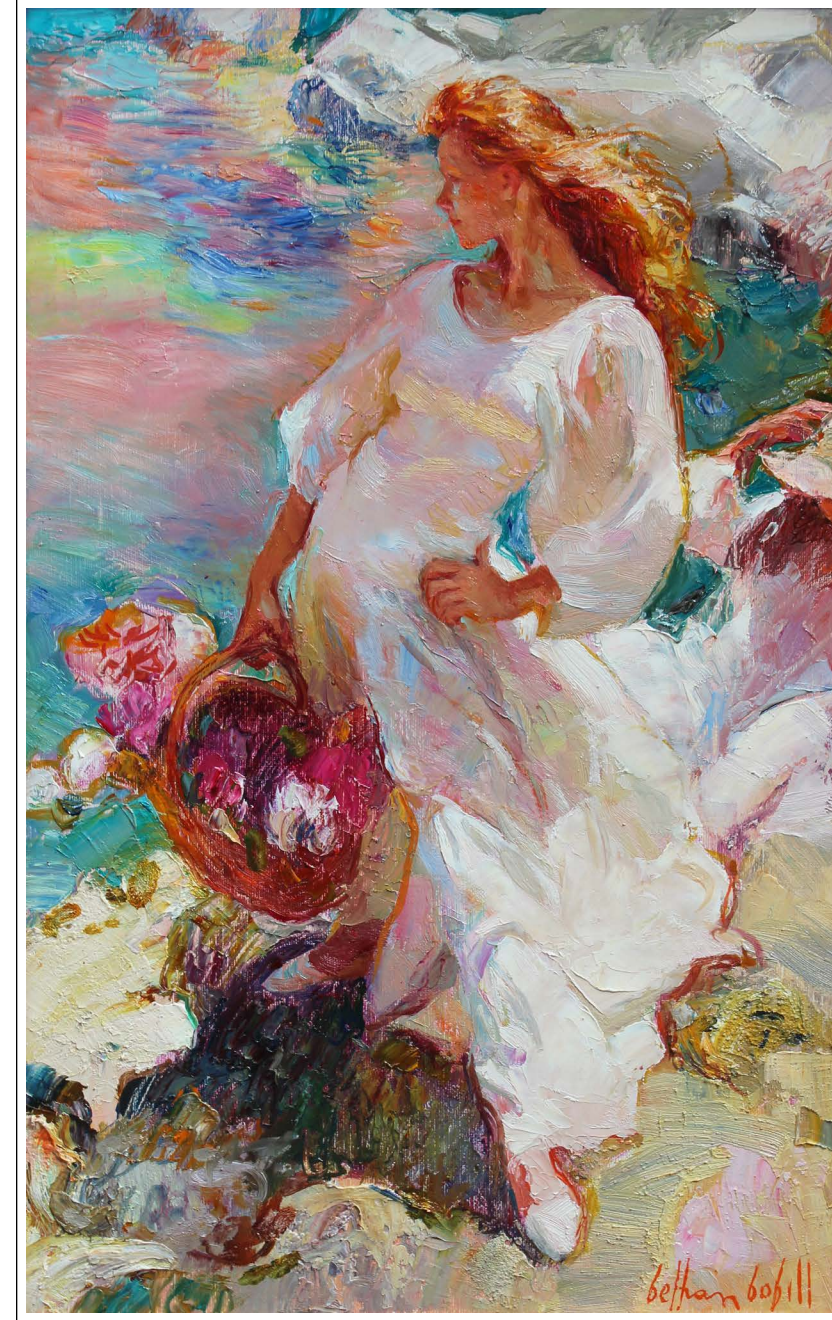
*FG© 132679*





**Beltran Bofill** | *Sonrisa*

oil on canvas | 39 3/8 x 31 7/8 in. | FG© 139404



**Beltran Bofill** | *Luces*

oil on canvas | 24 x 15 in. | FG© 139004

# Hugo Grenville

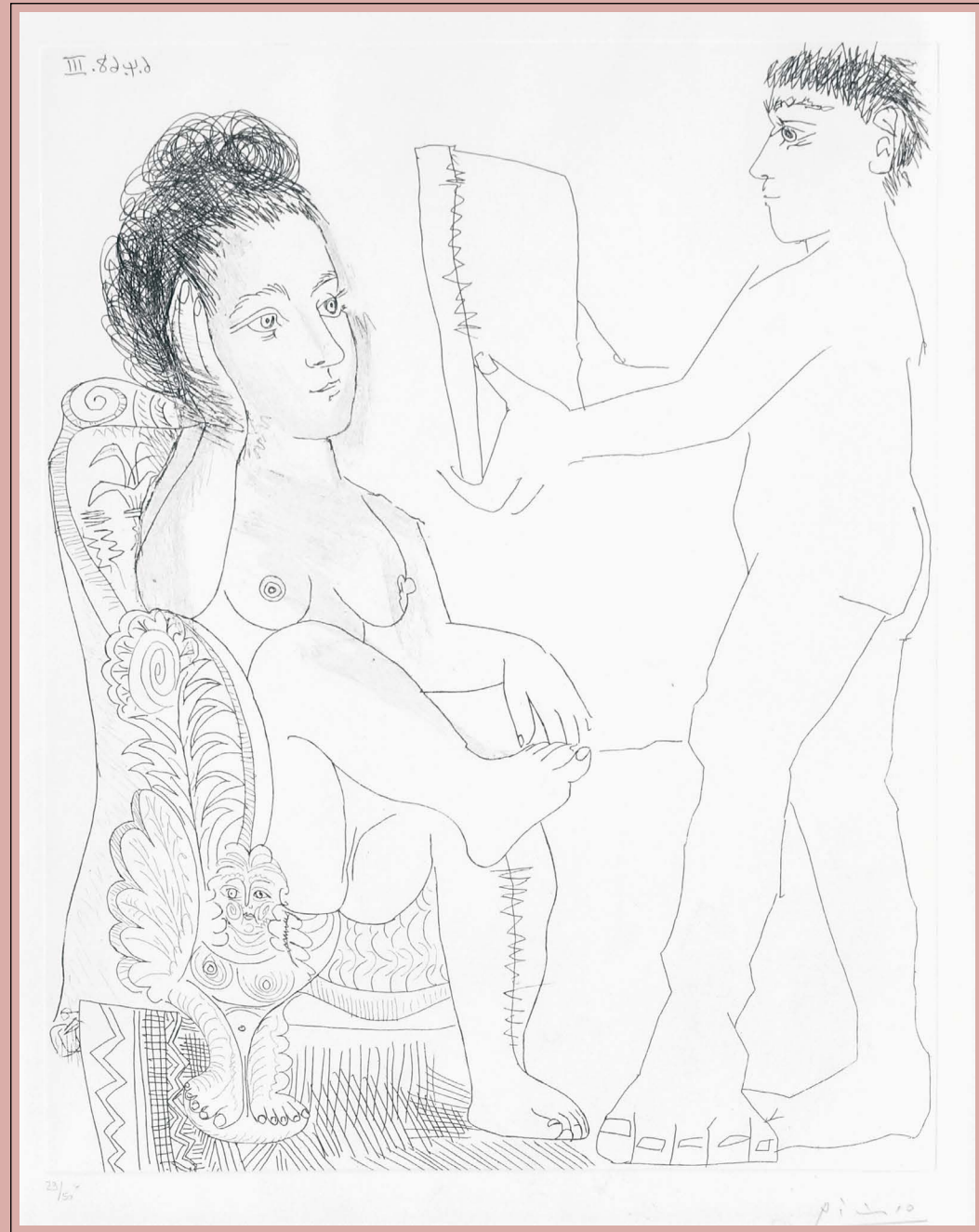
*Summer Morning, 23 Arcola Street*

oil on canvas

42 x 60 in.

FG© 134882





**Pablo Picasso** | Jeune Homme presentant un Miroir a une femme, pl. 19, Series 347, 1968  
etching and drypoint on Rives wove paper | 22 7/8 x 17 7/8 in. | FG© 136079



**Hugo Grenville** | *Sleeping Nude*  
charcoal on paper | 21 x 27 in. | FG© 134907



**Vu Cao Dam** | *Divinite (red coral)*, 1983  
oil on canvas | 36 1/4 x 28 3/4 in. | FG© 141647



**Le Pho** | *Femme sur la chaise*, 1970 | lithograph on paper |  
29 1/2 x 21 1/4 in. | FG© 140854



**Henri Matisse** | *Florilege des Amours de Ronsard*, 1948  
lithograph on arches paper | 15 1/8 x 11 1/8 in. | FG© 137250



**Nicola Simbari** | *Girl from Forio*, 1986  
oil on canvas | 35 1/2 x 39 1/3 in. | FG© 141422



**Charles Neal** | *Reflections - The Course of Destiny - The intergation of Fate*, 1971  
oil on canvas | 48 x 72 in. | FG© 139858



Dimitry  
**GERRMAN**

*Man Reading a Newspaper, 1997*

bronze, wood

18 x 12 x 5 in.

FG© 138644

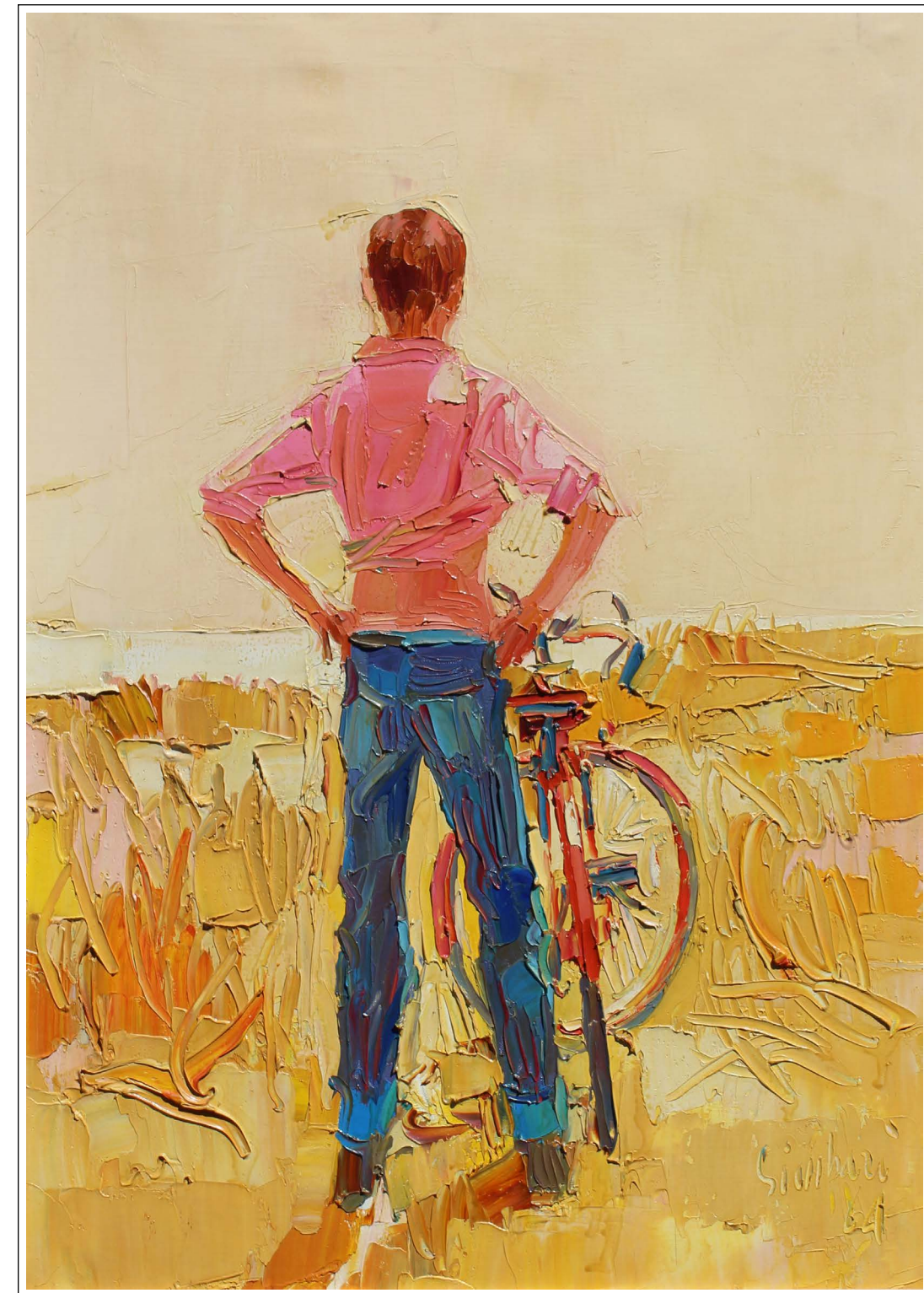
**Nicola Simbari**

*Yellow Beach, 1964*

oil on canvas

27 1/2 x 19 1/2 in.

FG© 139886



# Nicola Simbari

*Una giornata al mare*, 1986

oil on canvas

23 7/8 x 31 5/8 in.

FG© 141313





# FINDLAY GALLERIES

T H R E E   C E N T U R I E S   I N   A R T

For further information and pricing of  
these artworks please contact the gallery:

## NEW YORK

212.421.5390

[newyork@findlayart.com](mailto:newyork@findlayart.com)

32 East 57<sup>th</sup> Street, 2<sup>nd</sup> Floor

New York, New York 10022

## PALM BEACH

561.655.2090

[palmbeach@findlayart.com](mailto:palmbeach@findlayart.com)

165 Worth Avenue

Palm Beach, Florida 33480

W W W . F I N D L A Y G A L L E R I E S . C O M