

MARY SIPP GREEN



FINDLAY GALLERIES

T H R E E C E N T U R I E S I N A R T

MARY SIPP GREEN

Beyond the Visible

This exhibition is dedicated to Martin I. Green

32 EAST 57TH STREET, 2ND FLOOR, NEW YORK, NEW YORK 10022 • (212) 421-5390

165 WORTH AVENUE, PALM BEACH, FLORIDA 33480 • (561) 655-2090

WWW.FINDLAYGALLERIES.COM



Lavender by the Bay | oil on linen | 42 x 56 in. | FG© 141794 | (cover image)

MARY SIPP GREEN – *Beyond the Visible*

Mary Sipp Green’s evocative landscapes transcend the boundaries of realism, inviting the viewer into a world shaped by memory, light, and atmosphere. Her signature skies — layered with subtle, radiant hues — do not merely depict a scene; they reveal its emotional and spiritual resonance.

“I began painting what I saw — realistic, recognizable scenes,” she explains. “But over time, I longed to express something deeper. I wanted my work to speak beyond appearances, to capture a sense of place as it exists in memory and feeling.”

This shift in vision emerged in *Dusk on Goldenrod*, a turning point in Sipp Green’s career. Inspired by a familiar meadow suddenly transformed by goldenrod and shifting light, the painting marked her transition from realism to something more intuitive and poetic.

A native of New York, Mary grew up drawing in her father’s Manhattan art studio. She studied fashion design at the Fashion Institute of Technology and later ran a boutique in Greenwich Village. Eventually, she moved to the Berkshires, where she embraced painting full-time. “I needed to see what my work could become — I knew I would regret not trying.”

Her influences include George Inness, Albert Pinkham Ryder, James Whistler, Mark Rothko, and the Luminist painters — artists known for their spiritual engagement with light, tone, and space.

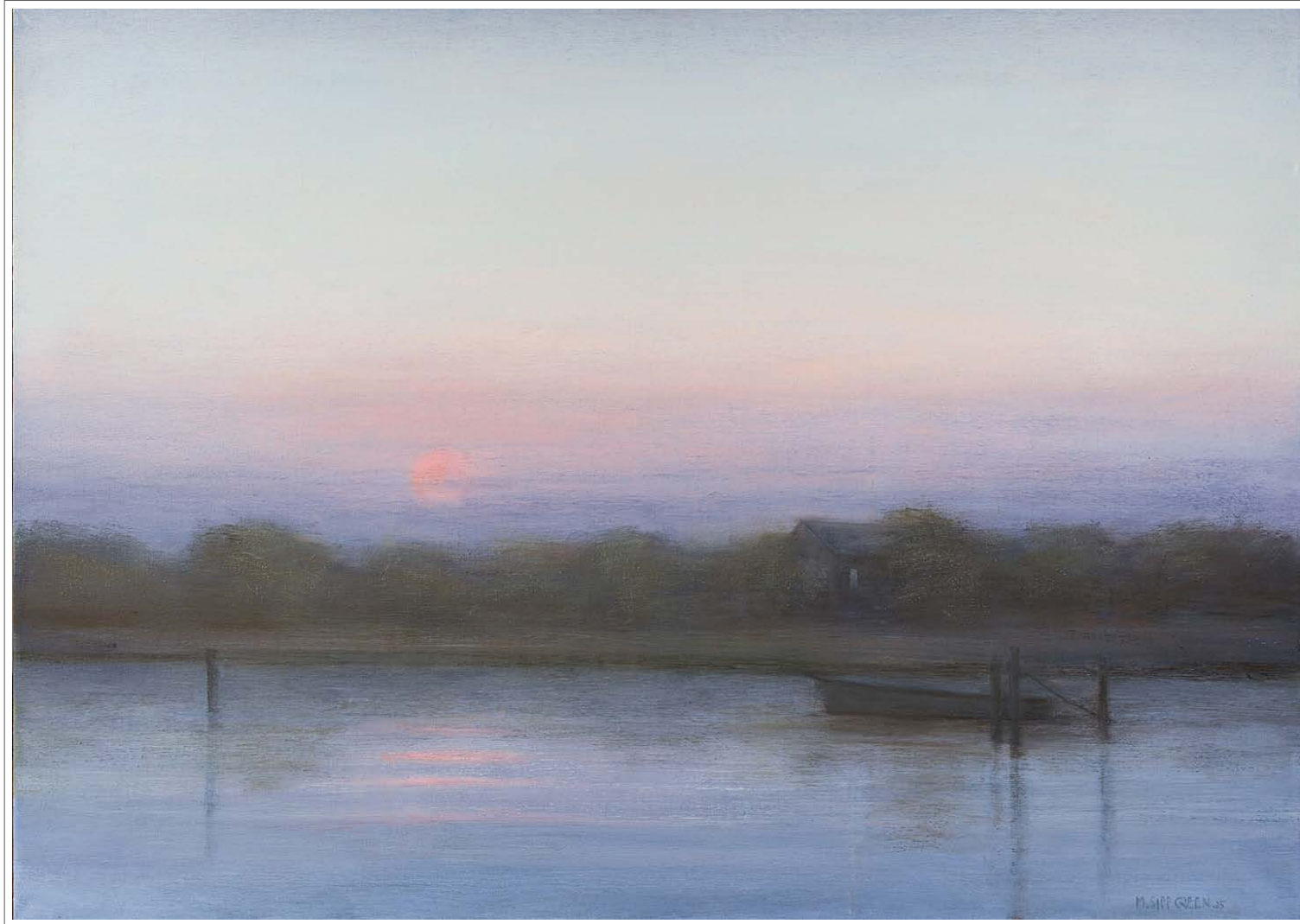
Findlay Galleries is proud to present the work of Mary Sipp Green — a Massachusetts-based artist whose paintings open a window into the soul of the landscape.

These are paintings to live with. Restrained and blurred, with a minimum of edge, they quietly draw you in, enveloping you as in a dream. There are forms enough to suggest a landscape, a seascape, or trees nestled by a stream. The time of day seems to be at twilight or just before dawn. Over it all is light - light as radiance, light emerging from shadow. Mary Sipp Green has brought her art via expert training to its present day stage over a quarter-century of painting. Its dependable quality will not escape you. Most remarkable to me, is a special sense of emergence. Put another way, her visions seem to find their path from within, rather than be forms applied to a surface...Her paintings offer a delicate serenity and peace.

– S. Lane Faison, Jr.
Director Emeritus
Williams College Museum of Art
Williamstown, MA



Summer Twilight in West Chop | oil on linen | 36 x 50 in. | FG© 138405

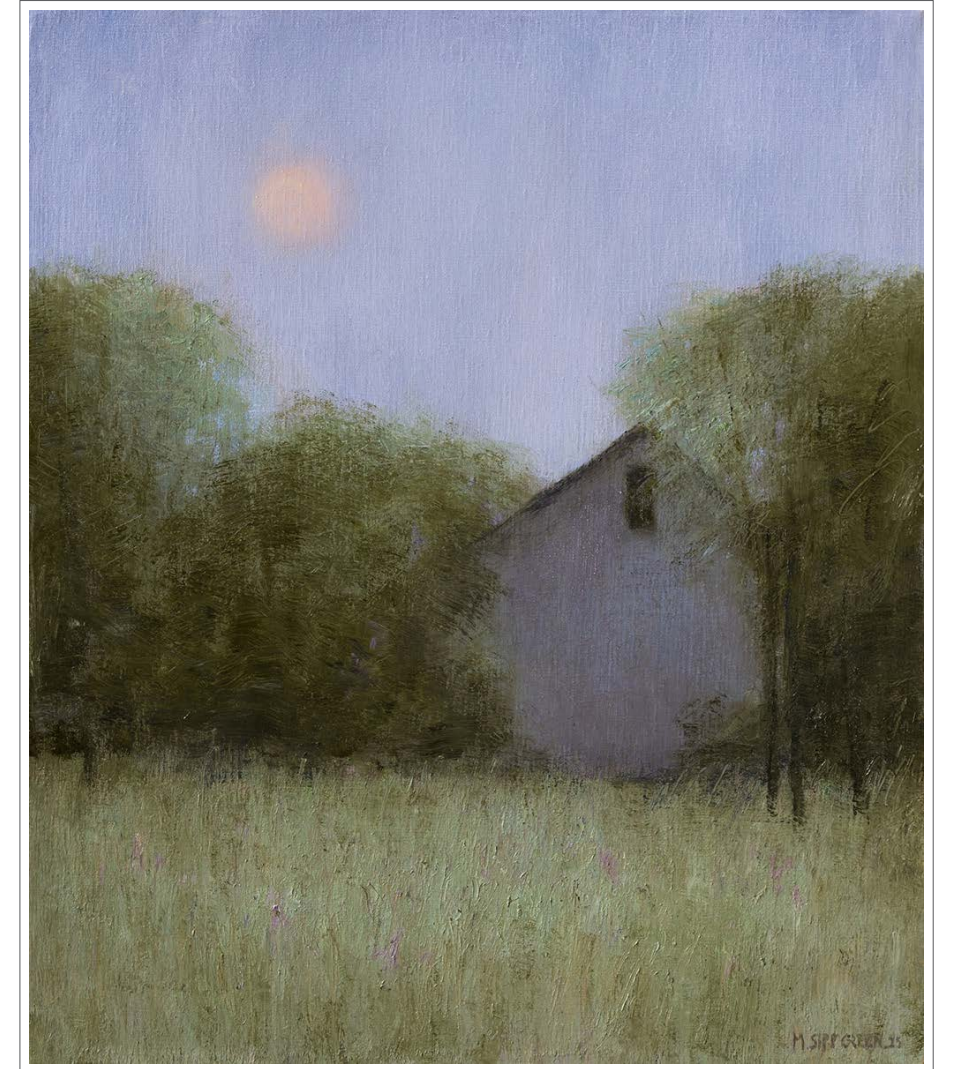


Sunset on East End

(left) oil on linen
34 x 48 in.
FG© 141796

Moonlit Meadow

(right) oil on linen
26 x 22 in.
FG© 141795





Museum Collections

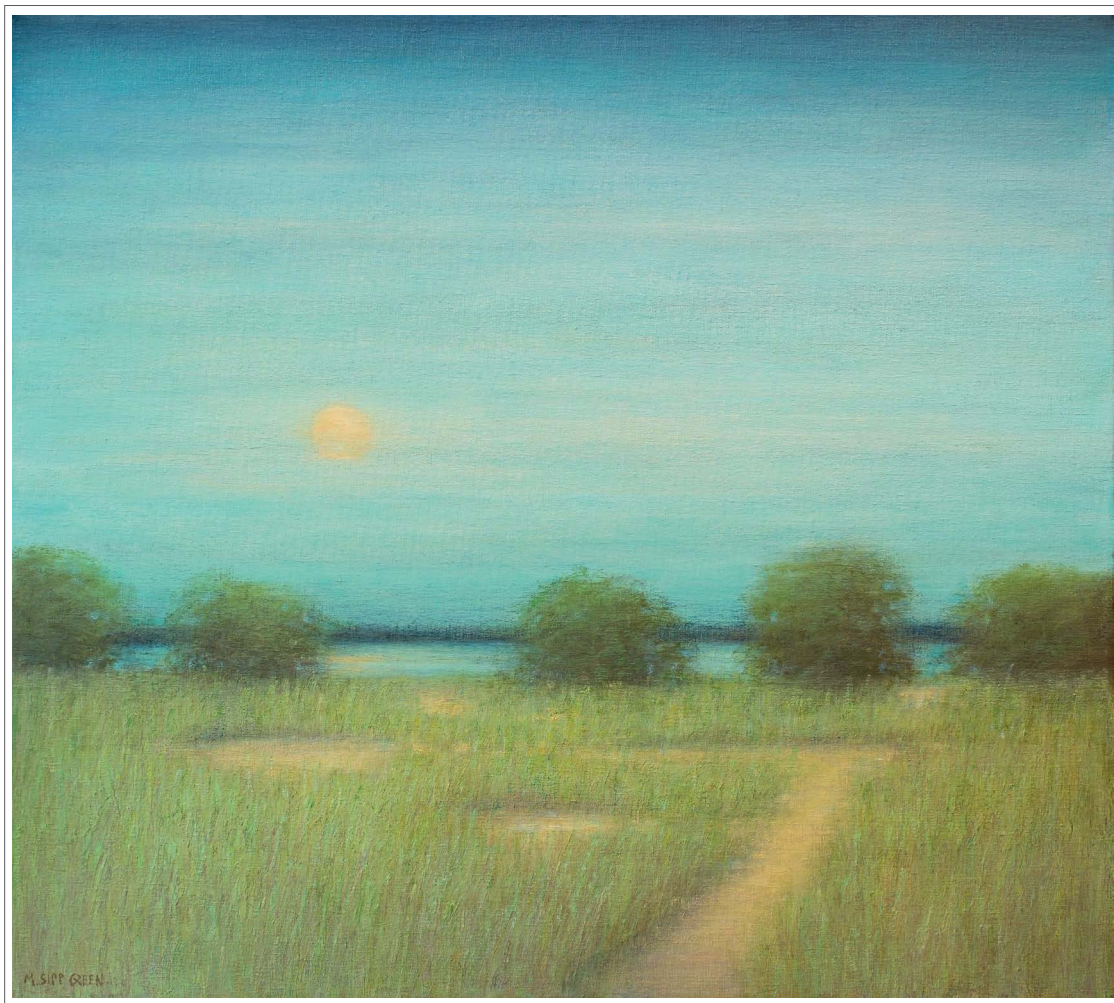
Arnot Art Museum Elmira, NY
Berkshire Museum, Pittsfield, MA
D'Amour Museum of Fine Arts, Springfield, MA
National Academy Museum, New York City, NY
Norman Rockwell Museum, Stockbridge, MA
Springfield Museum of Fine Art, Springfield, MA
The Butler Institute of American Art, Youngstown, OH

Notable Inclusions

United States Art for Embassies program

Menemsha

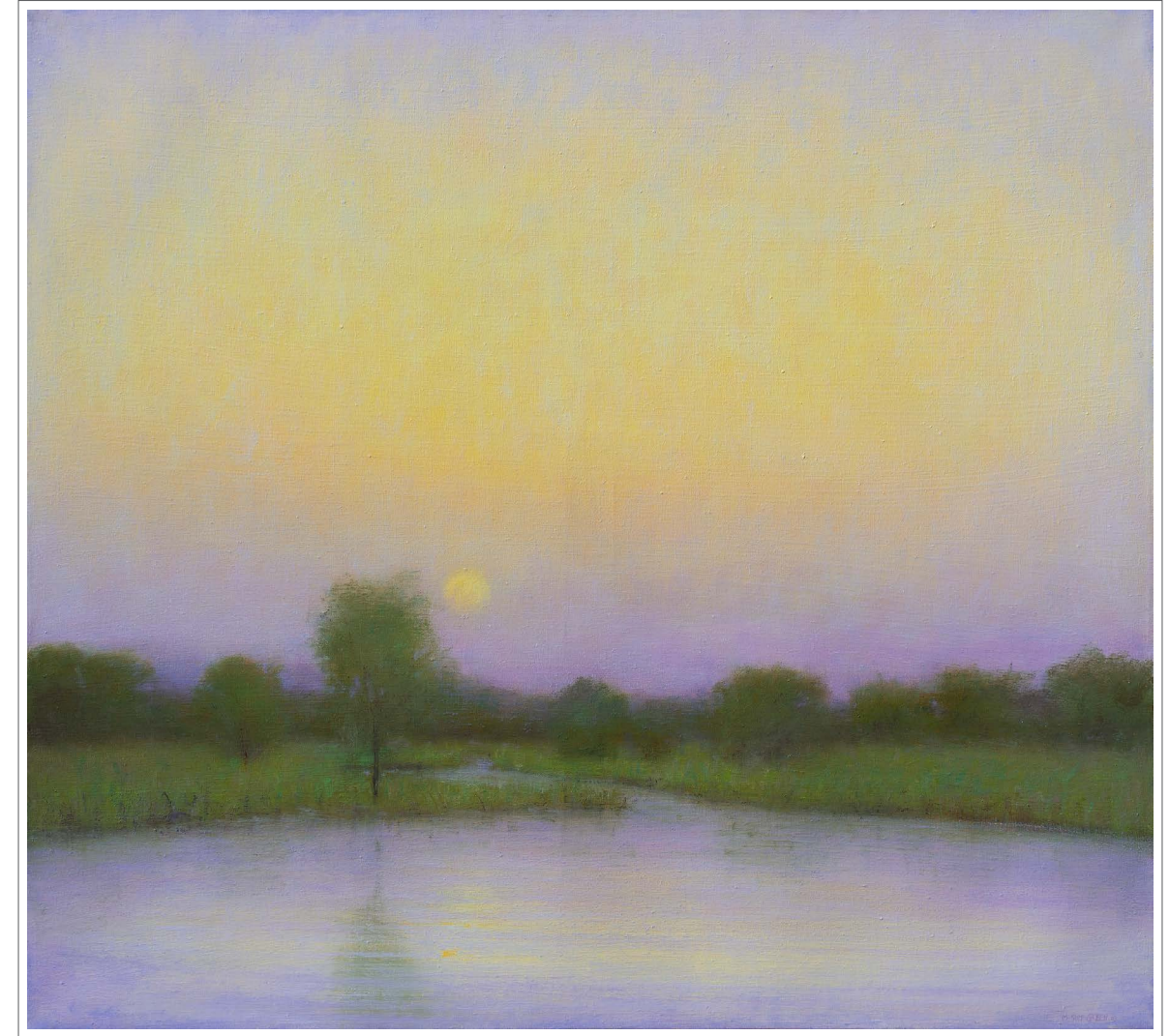
oil on linen
30 x 64 in.
FG© 138585



Sandy Paths at North Point | oil on linen | 34 x 38 in. | FG© 139544



Rosy Twilight in Stockbridge | oil on linen | 30 x 36 in. | FG© 138399



Caleb's Pond | oil on linen | 36 x 40 in. | FG© 141473

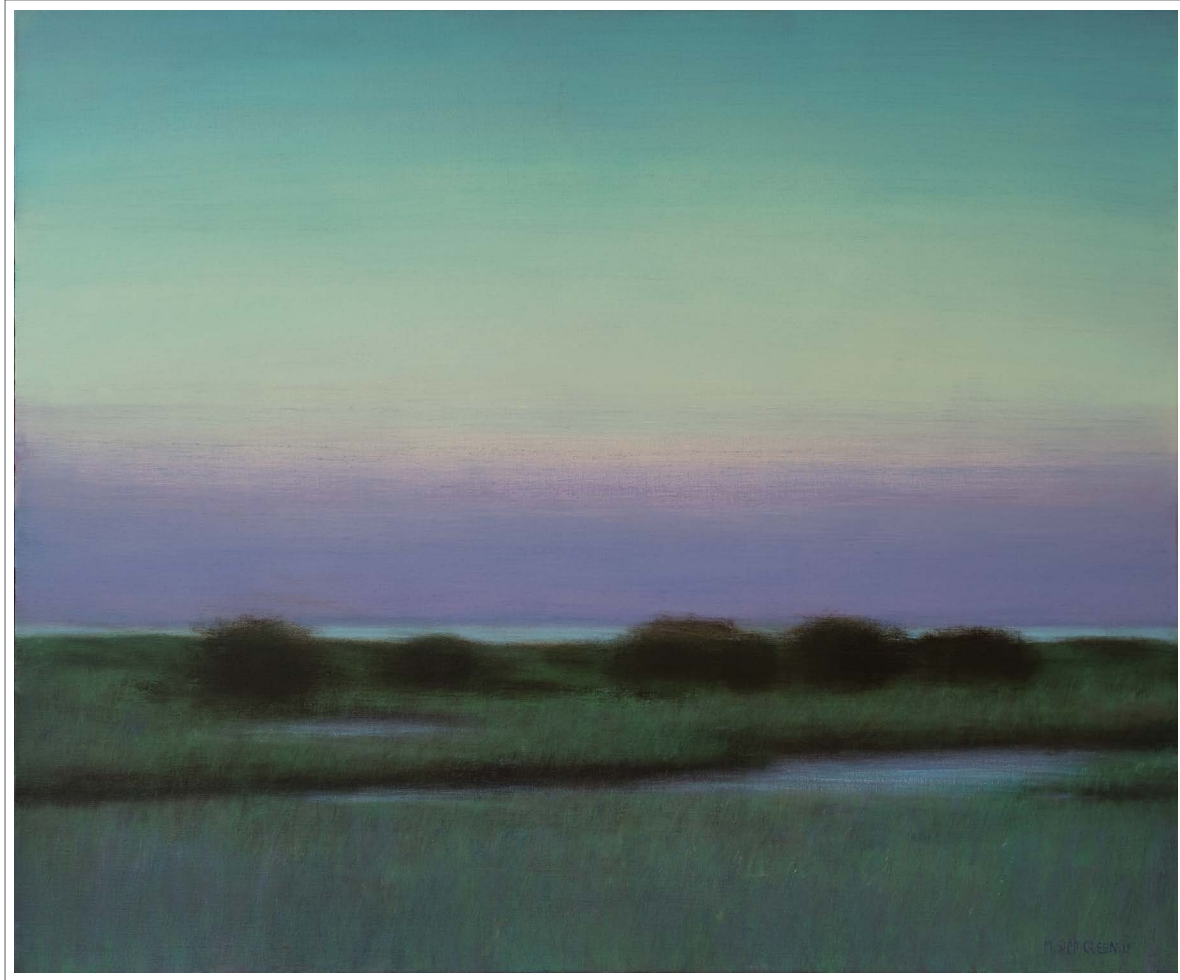


You have a gentle poetry that comes from within, as though you are really concerned more with the 'spirit' of a place than its full materiality, even though you clearly recognize that reality as being the only 'way in', but you do go in, and you take us with you: that's a joy.

– Sister Wendy Beckett, Art Historian

Low Clouds over Valensole, Provence

oil on linen
34 x 64 in.
FG© 136442



Salt Meadow, Menemsha | oil on linen | 38 x 46 in. | FG© 139872

Selected Exhibitions

- | | | | |
|------|---|---|---|
| 2025 | Findlay Galleries, New York, <i>Beyond the Visible</i> | Harrison Gallery, Williamstown, MA, Solo Exhibition | |
| 2024 | Findlay Galleries, New York, <i>Fields of Color - Group Exhibition</i> | Granary Gallery, Martha's Vineyard, MA | |
| 2022 | Nassau County Museum of Art, <i>Impressionism: A World View</i> | Cavalier Gallery, Nantucket, MA & Greenwich, CT | |
| 2021 | Findlay Galleries, Palm Beach, <i>The Vineyard</i> | 2002 | Arden Gallery, Boston, MA, Solo Exhibition |
| 2020 | Findlay Galleries, New York, <i>The Mystical Now</i> | Granary Gallery, Martha's Vineyard, MA | |
| 2019 | Findlay Galleries, Palm Beach, <i>A Certain Slant of Light</i> | 2001 | Multiple Impressions Gallery, New York, NY, Solo Exhibition |
| 2018 | Findlay Galleries, New York, <i>Martha's Vineyard</i> | Norman Rockwell Museum, Stockbridge, MA | |
| 2016 | Wally Findlay Galleries, Palm Beach, Solo Exhibition, <i>Les Couleurs de la Lumiere: Paris and Provence</i> | 2000 | Arden Gallery, Boston, MA, Solo Exhibition |
| 2015 | Wally Findlay Galleries, New York, Solo Exhibition, <i>Les Couleurs de la Lumiere: Paris and Provence</i> | 1999 | Multiple Impressions Gallery, New York, NY, Solo Exhibition |
| 2014 | Butler Institute of American Art, Youngstown, OH, <i>Recent Acquisitions: Butler Pastel Collection</i> | Hemphill Fine Arts, Washington, DC | |
| | Wally Findlay Galleries, New York, Solo Exhibition, <i>The Poetic Landscape: Selected Paintings</i> | 1998 | Granary Gallery, Martha's Vineyard, MA |
| 2013 | Wally Findlay Galleries, Palm Beach, Solo Exhibition, <i>Between Two Moments</i> | 1997 | Union League, New York, NY |
| 2011 | Wally Findlay Galleries, Palm Beach, Solo Exhibition, <i>Ethereal Twilight</i> | Granary Gallery, Martha's Vineyard, MA | |
| | Wally Findlay Galleries, New York, Solo Exhibition, <i>Texas Blues</i> | 1996 | Arden Gallery, Boston, MA, Solo Exhibition |
| 2008 | Wally Findlay Galleries, Palm Beach, Group Exhibition, <i>First Collection</i> | Bush Gallery, Lowell, MA | |
| 2007 | Wally Findlay Galleries, Palm Beach, Solo Exhibition | Cavalier Gallery, Greenwich, CT | |
| | Wally Findlay Galleries, New York, Solo Exhibition, <i>Coloritura</i> | 1995 | Arden Gallery, Boston, MA, Solo Exhibition |
| | Wally Findlay Galleries, New York, Group Exhibition, <i>A Century of Landscapes</i> | 1994 | National Academy Museum, New York, NY |
| 2006 | Wally Findlay Galleries, New York, Group Exhibition, <i>Art for the Young Collector</i> | 1993 | Ute Stebich Gallery, Lenox, MA, Solo Exhibition |
| | Wally Findlay Galleries, Palm Beach, Group Exhibition, <i>Works on Paper</i> | 1992 | National Academy Museum, New York, NY |
| 2005 | Wally Findlay Galleries, Palm Beach, <i>Two Person Exhibition, Luminous Landscapes</i> | 1990 | Forum Gallery, New York, NY |
| | Wally Findlay Galleries, New York, Group Exhibition, <i>Four Americans</i> | National Academy Museum, New York, NY | |
| | Springfield Museum of Fine Arts, Springfield, MA, Solo Exhibition <i>Selected Works 1990 -2004</i> | | |
| | Arnot Art Museum Elmira, NY, <i>Re-Presenting Representation</i> | | |
| | Berkshire Museum, Pittsfield, MA, <i>The Power of Place: The Berkshires</i> | | |
| 2004 | Vose Galleries, Boston, MA, <i>Mentors and Protégés</i> | | |
| | Norman Rockwell Museum, Stockbridge, MA, <i>Housatonic River Reflections</i> | | |
| | Granary Gallery, Martha's Vineyard, MA | | |
| | Multiple Impressions Gallery, New York, NY | | |
| | Weber Fine Arts, Chatham, NY | | |
| | Harrison Gallery, Williamstown, MA | | |
| | Cavalier Gallery, Nantucket, MA & Greenwich, CT | | |
| 2003 | Multiple Impressions Gallery, New York, NY, Solo Exhibition | | |



FINDLAY GALLERIES

T H R E E C E N T U R I E S I N A R T

For further information and pricing of
these artworks please contact the gallery:

NEW YORK

212.421.5390

newyork@findlayart.com

32 East 57th Street, 2nd Floor

New York, New York 10022

PALM BEACH

561.655.2090

palmbeach@findlayart.com

165 Worth Avenue

Palm Beach, Florida 33480

W W W . F I N D L A Y G A L L E R I E S . C O M