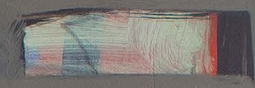


Foruit



FINDLAY GALLERIES



FINDLAY GALLERIES

THREE CENTURIES IN ART

Gorvik

MASTER FRENCH MODERNIST

165 WORTH AVENUE, PALM BEACH, FLORIDA 33480 • (561) 655-2090
32 EAST 57TH STREET, 2ND FLOOR, NEW YORK, NEW YORK 10022 • (212) 421-5390

WWW.FINDLAYGALLERIES.COM



St. Tropez, 1984
oil on canvas
57 1/2 x 38 3/16 in.
FG© 141535

Gilles Gorriti, born in Paris in 1939, emerged as a prominent figure in modern painting, carrying a remarkable artistic lineage. His grandfather, Paul Aïzpiri, was a renowned artist, and his father, Ignacio Gorriti de Aïzpiri, a skilled sculptor, both of whom influenced his early exposure to the arts. At just seventeen, Gorriti held his first solo exhibition at Galerie Morval, a notable accomplishment that propelled him into the Parisian art scene. Soon after, he became a member of the prestigious Salon d'Automne, an important platform for avant-garde artists.

Gorriti's career took a significant leap in 1962 when the City of Paris acquired one of his paintings, marking the beginning of his rise to international recognition. By 1965, his work had reached Japan, where it was featured in the Fourth International Exhibition of Figurative Art, an event that cemented his status as a global artist. His art was deeply inspired by his extensive travels and his passion for music, particularly Flamenco and classical. These influences can be seen in his vibrant use of color and the emotional depth that permeates his work.

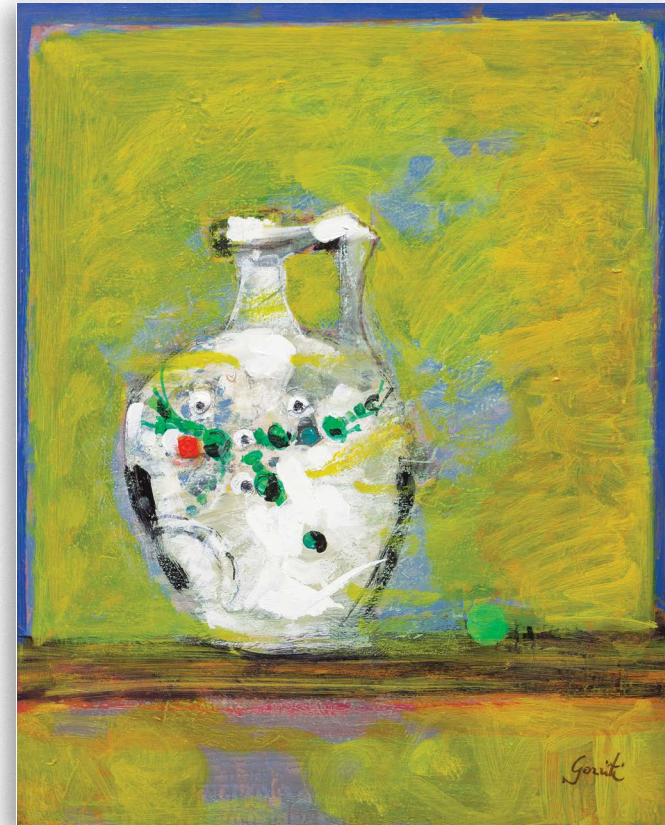
Gorriti's Mediterranean landscapes, bustling Parisian streets, and intimate interiors are celebrated for their dynamic compositions and expressive color palettes. His mastery of light and color played a key role in his artistic process. As with all painters, Gorriti had the option to employ shading and tinting techniques, but he favored tinting to create clarity and capture the essence of sunlight in his outdoor scenes. This technique allowed him to convey the warmth and purity of Mediterranean light with remarkable realism.

When transitioning to his interior and still life work, Gorriti utilized shading to emphasize the solidity of objects, enhancing the formal relationships between elements in the composition. This shift in approach made his interiors more dynamic, with a greater focus on the physicality of objects. Represented by Findlay Galleries from 1983 until his death in 2019, Gorriti's work continues to be celebrated in private collections and museums worldwide, including the National Museum of Art in Osaka, Japan.



Léventail | mixed media on canvas | 36 1/4 x 28 3/4 in. | FG© 133322

“What is important to me is to feel things on a personal level and to try to recreate something in dialogue with oneself. When I see an object, obviously I see it as it is. But that’s of no interest to me, what I’m interested in is achieving an interpretation of it, transforming it.” – Gilles Gorriti



La Poterie Navarraise
oil on canvas
31 7/8 x 25 9/16 in.
FG© 141407



La Poterie Navarraise
oil on canvas
31 7/8 x 25 9/16 in.
FG© 141408



Papillon blanc | mixed media on canvas | 36 1/4 x 28 3/4 in. | FG© 133329



(cover image) *Les deux drapeaux* | oil on canvas | 63 3/4 x 51 3/16 in. | FG© 141400

Souvenir du Japon (Triptyque)
oil on canvas
47 1/4 x 70 7/8 in.
FG© 141403



Pablo Picasso (1881-1973)
Chouette
terre de faïence
11 1/2 x 9 x 6 in.
FG© 140802





Deux feuilles vertes | oil on canvas | 31 7/8 x 25 9/16 in. | FG© 141404

“I love painting and I love music, and sometimes it is difficult for me to separate them. I ‘see’ Debussy and I ‘hear’ Bonnard, whose subtle harmonies, which are so dear to me, are really indistinguishable.” – Gilles Gorriti



Le Professeur | oil on canvas | 51 3/16 x 38 3/16 in. | FG© 141383



La partition | oil on canvas | 36 1/4 x 28 3/4 in. | FG© 141397



La plage a Saint-Jean-de-Luz | oil on canvas | 35 1/16 x 45 11/16 in. | FG© 141414



San Sebastian | oil on canvas | 44 7/8 x 76 3/4 in. | FG© 141413



Le Jardin De Monfort
oil on canvas
21 5/8 x 18 1/8 in.
FG© 141421



Paris | oil on canvas
18 1/8 x 14 11/16 in.
FG© 141415



Terrasse de cafe, 1985 | oil on canvas | 57 1/2 x 45 in. | FG© 140220

WALLY FINDLAY GALLERIES

EST. 1870



Lèventail | oil on canvas | 21 5/8 x 18 1/8 in. | FG© 141012

New York

32 E 57th St, 2nd Floor

New York, NY 10022

(212) 421-5390

newyork@findlayart.com

Palm Beach

165 Worth Avenue

Palm Beach, FL 33480

(561) 655-2090

palmbeach@findlayart.com

WWW.FINDLAYGALLERIES.COM