



FINDLAY GALLERIES

THREE CENTURIES IN ART

SAND, SEA & VESSELS

SUMMER
DISCOVERIES

ADRION • ARDISSONE • BOUDET • BOUQUET • DELTOMBE
DINSDALE • DZIGURSKI • EISENDIECK • FLINT • GALL
JACOBSEN • MALET • PALUE • PATTERSON • PUIG • SÉBIRE
SKALAMERA • SIMBARI • ABEL-TRUCHET • VINCENT



FINDLAY GALLERIES

THREE CENTURIES IN ART

FROM THE GARDEN

SUMMER

DISCOVERIES

ADRION • ARDISSONE • BOUDET • BOUQUET • DELTOMBE
DINSDALE • DZIGURSKI • EISENDIECK • FLINT • GALL
JACOBSEN • MALET • PALUE • PATTERSON • PUIG • SÉBIRE
SKALAMERA • SIMBARI • ABEL-TRUCHET • VINCENT

32 EAST 57TH STREET, 2ND FLOOR, NEW YORK, NEW YORK 10022 • (212) 421-5390

165 WORTH AVENUE, PALM BEACH, FLORIDA 33480 • (561) 655-2090

WWW.FINDLAYGALLERIES.COM



Nicola Simbari (1927-2012) | *Susanna*, 1980
acrylic on canvas | 35 5/8 x 31 1/2 in. | FG©I35628

Findlay Galleries in Palm Beach is pleased to present the first chapter of its “*Summer Discoveries*” Series: *Sand, Sea & Vessels*. This captivating exhibition celebrates the vibrant aesthetics of coastal life through a curated selection of artworks from our gallery’s holdings. The exhibition explores themes of the ocean, the beauty of sandy shores, and the intricacies of maritime vessels. It features renowned artists whose works encapsulate the essence of summer’s allure. Findlay Galleries invites viewers to explore these beautiful works of art and to discover a great value opportunity. The exhibition includes works from artists such as Nicola Simbari, Gaston Sébire, Yolande Ardissonne, Magí Puig and many more. On view in Palm Beach from August, 15 – October 1st.



Yolande Ardissonne | *Les Calanques d'Antheor*
oil on canvas | 25 9/16 x 31 7/8 in. | FG©139738



William Russell Flint (1880-1969) | *Jennifer and Hazel on a Sandy Estuary*
watercolor | 18 1/4 x 25 1/4 in. | FG©136416



Gaston Sébire (1920-2001) | *Descente a la mer*
oil on canvas | 32 x 39 1/2 in. | FG©137080



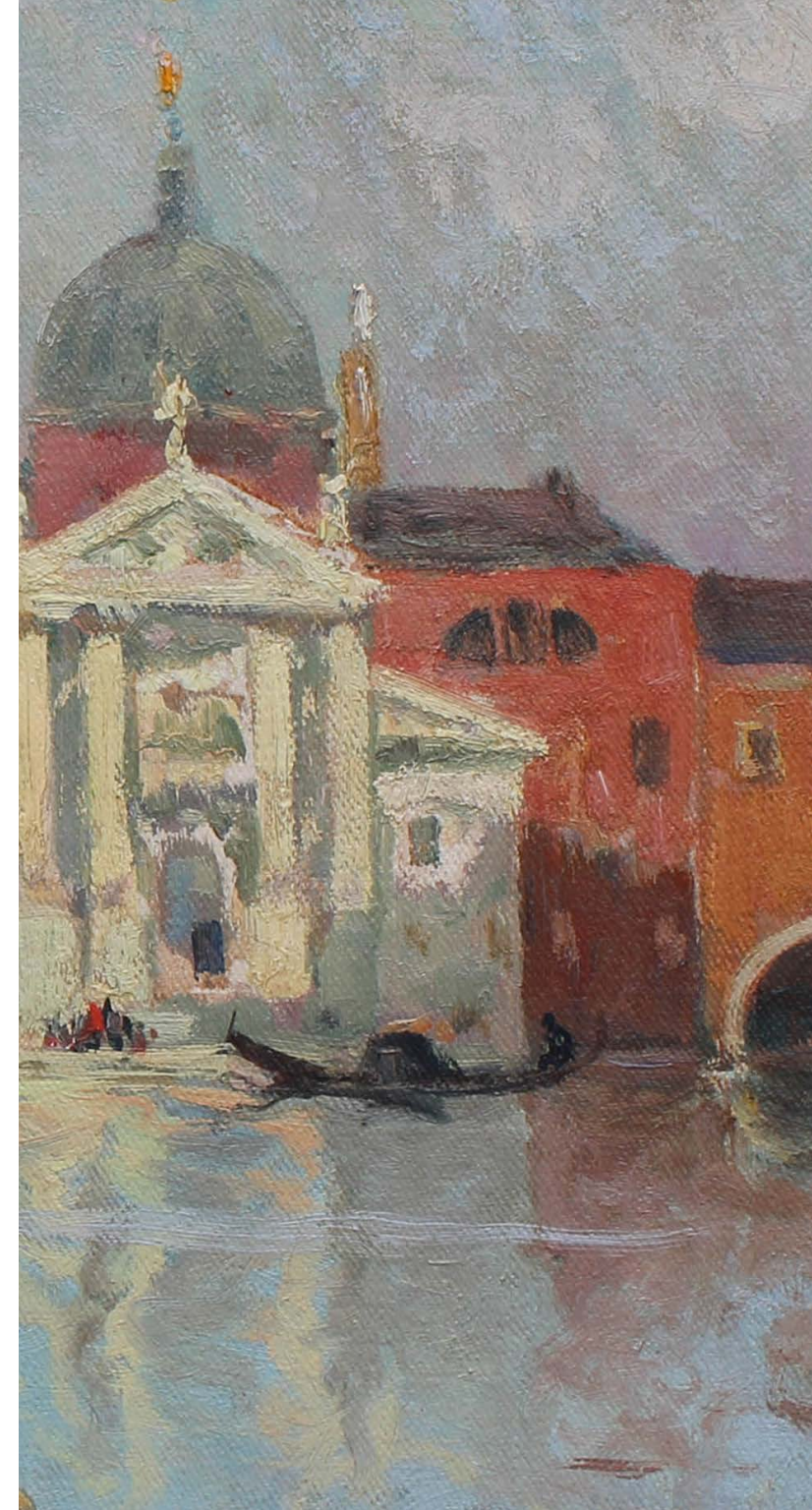
Louis Abel-Truchet (1857-1918)

Venise, San Giorgio Maggiore

oil on canvas

15 x 21 3/4 in.

FG©139802





Albert Malet (1912-1986) | *Dorure du soir*
oil on panel | 18 1/8 x 25 5/8 in. | FG©137810



Andre Bouquet (1897-1987) | *Voile*, 1970
oil on panel | 18 1/8 x 21 5/8 in. | FG©139740



Paul Deltombe (1978-1971) | *Pornichet*
oil on canvas laid on board | 21 1/4 x 25 1/2 in. | FG©140017



Nicola Simbari (1927-2012) | *Peruvian Beach*
acrylic on canvas | 35 1/2 x 39 1/2 in. | FG©107707



Francois Gall (1912-1987) | *Deauville*
oil on canvas | 21 5/8 x 18 1/8 in | FG©136087



Magi Puig | *Zona Blava* | oil on canvas | 24 x 28 3/4 in. | FG©141227



Rinaldo Skalamera | *Healing Waters*
watercolor paper | 7 5/8 x 10 1/4 in. | FG©131750



Rinaldo Skalamera | *Natures Mirror*
oil on canvas | 33 1/8 x 42 3/4 in. | FG©130808

Pierre Palue

Le clocher de Saint Tropez

oil on canvas

21 1/4 x 25 9/16 in.

FG©138774





Suzanne Eisendieck (1908-1998) | *Balon a Positano*
oil on canvas | 24 x 18 1/8 | FG©134307



Lucien Adrien (1889-1853) | *La plage de Cayeux*
oil on canvas | 21 1/4 x 25 9/16 in. | FG©137102



Pierre Boudet | *Place de La Mede* | oil on canvas | 21 1/4 x 25 9/16 in. | FG©120787



Magi Puig

De quin color es el mar

oil on canvas

19 5/8 x 39 1/8 in.

FG©141279





Magi Puig | *Bandera* | oil on canvas | 18 x 18 in. | FG©141281





Gaston Sébire (1920-2001) | Port de Oustreham
109/200 | lithograph on paper | FG©126524

Gaston Sébire (1920-2001)

La Plage

lithograph on paper

29 3/4 x 22 in.

FG©130038





Yolande Ardissonne

Voiliere a la trinite

oil on canvas

51 1/4 x 38 3/8 in.

FG©140221





Alexander Dzigurski (1911-1995) | *Sunset*
oil on canvas | 24 x 36 in. | FG©135058



Harry Aiken Vincent | *Ships at Gloucester, c. 1918*
oil on canvas | 28 x 36 in. | FG©141079



John Bentham Dinsdale (1927-2008) | *Red Jacket*
oil on canvas | 8 x 10 in. | FG©117381



John Bentham Dinsdale (1927-2008) | *The Providence John Paul Jones First Command*
oil on board | 16 x 12 in. | FG©127791



Antonio Jacobsen (1850-1921)

The Steamship Britannic, 1882

oil on canvas

22 x 36 in.

FG©137513





John Bentham Dinsdale (1927-2008) | *Star of Empire*
oil on canvas | 8 x 10 in. | FG©117384



John Bentham Dinsdale (1927-2008) | *Flying Cloud*
oil on canvas | 30 x 40 in. | FG©116381



Charles Robert Patterson (1878-1958) | *Downeaster Valley Forge*, c. 1920
oil on canvas | 20 x 24 in. | FG©129370



Stephen J. Renard | *Westward slightly leading Cicely off Norris Castle in the Solent.*, 1992
oil on canvas | 29 7/8 x 39 3/4 in. | FG©134632



Antonio Jacobsen (1850-1921)

Andrew G. Pierce, Jr., 1905

oil on canvas

30 x 50 in.

FG©135344



FINDLAY GALLERIES

THREE CENTURIES IN ART

For inquiries, acquisitions and consignments
please contact our galleries:

Palm Beach

(561) 655-2090

palmbeach@findlayart.com

165 Worth Avenue

Palm Beach, Florida 33480

New York

(212) 421-5390

newyork@findlayart.com

32 East 57th Street, 2nd Floor

New York, New York 10022

WWW.FINDLAYGALLERIES.COM