



# Masters of Montmartre

Lucien Adrion

Merio Ameglio

Élisée Maclet

Alphonse Quizet

Maurice Utrillo



**FINDLAY  
GALLERIES**

EST. 1870 PALM BEACH / NEW YORK



FINDLAY GALLERIES

THREE CENTURIES IN ART

Masters of  
**Montmartre**

165 WORTH AVENUE, PALM BEACH, FLORIDA 33480 • (561) 655-2090

32 EAST 57<sup>TH</sup> STREET, 2<sup>ND</sup> FLOOR, NEW YORK, NEW YORK 10022 • (212) 421-5390

[WWW.FINDLAYGALLERIES.COM](http://WWW.FINDLAYGALLERIES.COM)

Lucien Adrion

Merio Ameglio

Élisée Maclet

Alphonse Quizet

Maurice Utrillo

In the early 20th century, Montmartre stood as a beacon of artistic exuberance, its cobblestone streets and vibrant cafes brimming with creativity and charm. Maurice Utrillo, Élisée Maclet, Alphonse-Léon Quizet, and Lucien Adrion flourished in this bustling artistic enclave, each bringing a unique vibrancy to Montmartre's storied landscape.

Despite the turbulence of his personal life, Maurice Utrillo found a sanctuary in the enchanting streets of Montmartre. As the son of the illustrious artist Suzanne Valadon (formerly a favorite model to both Renoir and Degas), Utrillo's early struggles with mental health and alcoholism were transformed into a unique artistic vision. His cityscapes, often portraying the charming facades of Montmartre's buildings, radiated a poignant beauty. Utrillo's soft, muted tones and rich impasto techniques captured the ever-changing essence of this vibrant neighborhood. His work, imbued with a melancholic charm, stands as a testament to the profound solace and fleeting moments of clarity he discovered in Montmartre's enduring allure.

On the other hand, Élisée Maclet's works burst with a joyous energy that is both uplifting and inspiring. Hailing from Picardy, Maclet was utterly enchanted by Montmartre's light and color. His paintings, alive with bright hues and whimsical perspectives, celebrated the bustling squares and hidden alleys with an infectious sense of delight. Maclet's cheerful interpretations brought the joie de vivre of Montmartre to life, painting a picture of a community alive with laughter and light.

Alphonse-Léon Quizet, a close friend and collaborator of Utrillo, shared a deep reverence for Montmartre's rustic charm. Quizet's work often ventured to the neighborhood's outskirts, where urban life mingled with pastoral serenity. His paintings, rich in detail and atmosphere, captured the quiet corners and old farmhouses, preserving the essence of a rapidly changing Montmartre. Quizet's meticulous brushwork and heartfelt compositions spoke of a gentle, enduring affection for this beloved artist's haven.

Lucien Adrion, a later addition to the Montmartre scene who arrived from Strassburg in 1917, infused his work with a dynamic, modern flair. His vibrant depictions of Parisian life, from lively streets to bustling cafes, reflected the city's boundless energy. Adrion's art, influenced by Fauvism and Expressionism, brought a fresh, contemporary perspective to Montmartre's timeless allure, celebrating its perpetual vivacity.

Together, these artists wove a rich and joyous narrative of Montmartre, each with distinctive styles and visions, crafting an enduring legacy of an artistic paradise that continues to captivate and inspire. Visit our Palm Beach gallery or contact your art consultant to learn more about this beautiful and extensive collection.



Maurice  
**Utrillo**

*Chateau des Brouillards,  
rue Girardon a Montmartre, 1937*

gouache on paper  
18 7/8 x 24 5/8 in.  
FG© 141052



Élisée  
**Maclet**



Elisee Maclet (1881-1962) | *Le Moulin Rouge*  
oil on cardboard | 19 1/4 x 26 3/8 in. | FG© 136822



(left) Elisee Maclet (1881-1962)  
*Aux deux marronniers*

---

oil on canvas  
8 1/16 x 21 5/8 in.  
FG© 137104

(right) Elisee Maclet (1881-1962)  
*Fete de 14 de Juillet*

---

oil on canvas  
16 1/8 x 13 in.  
FG© 140124





Elisee Maclet (1881-1962)

*La rue de Saules*

oil on canvas

18 1/8 x 21 5/8 in.

FG© 136634

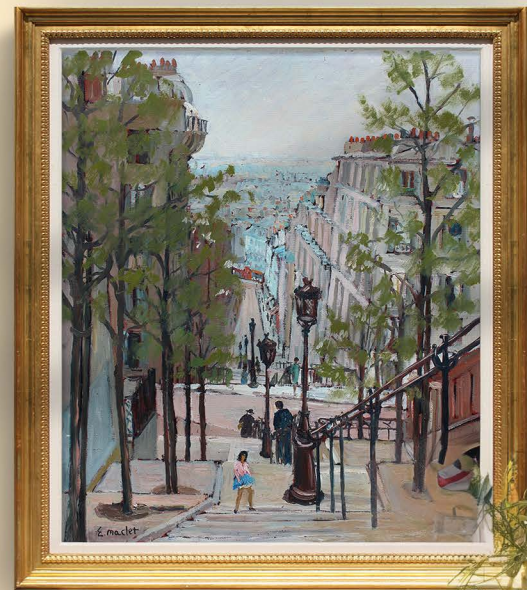




Elisee Maclet (1881-1962) | *Moulin de la Galette a Montmartre*  
oil on canvas | 12 3/8 x 16 in. | FG© 135176



Elisee Maclet (1881-1962) | *Montmartre*  
oil on canvas | 18 1/8 x 21 5/8 in. | FG© 131568



Elisee Maclet (1881-1962)

*Montmartre, rue Chappe*

---

oil on canvas

25 5/8 x 21 1/4 in.

FG© 139182





Elisee Maclet (1881-1962) | *Maisons a Montmartre*  
oil on canvas | 18 1/8 x 21 5/8 in. | FG© 137476



Elisee Maclet (1881-1962) | *Bateau Lavoir*  
oil on canvas | 18 x 21 1/2 in. | FG© 131363



Elisee Maclet (1881-1962) | *Les Moulins de Montmartre et la Tour Eiffel*  
oil on canvas | 18 1/8 x 21 5/8 in. | FG© 136062



Elisee Maclet (1881-1962) | *Bateaux de peche a Collioure*  
oil on canvas | 18 1/8 x 21 5/8 in. | FG© 136823



Elisee Maclet (1881-1962) | *Avenue de la Palmeraie, Golfe-Juan*  
oil on canvas | 21 1/16 x 28 1/4 in. | FG© 135040



Elisee Maclet (1881-1962)  
*Paris, l'Eglise Saint Germaines  
des Pres sous la neige*

---

oil on canvas  
18 1/8 x 21 5/8 in.  
FG© 136385



Elisee Maclet (1881-1962)  
*Cour de Rohan*

---

oil on canvas  
19 11/16 x 24 in.  
FG© 137105

Alphonse  
**Quizet**



Alphonse-Léon Quizet (1885-1955) | *Vieille maison*  
oil on panel | 14 15/16 x 18 1/8 in. | FG© 135278



Alphonse-Leon Quizet (1885-1955) | *Pre-Saint-Gervais*  
oil on canvas | 34 1/4 x 39 1/8 in. | FG© 135037



Alphonse-Leon Quizet (1885-1955) | *Rue animee*  
oil on masonite | 18 1/8 x 25 9/16 in. | FG© 136821



Alphonse-Léon Quizet (1885-1955) | *Les Moulins*  
oil on panel | 9 7/16 x 13 3/4 in. | FG© 134199



Alphonse-Leon Quizet (1885-1955) | *Montmartre*  
oil on panel | 8 11/16 x 10 5/8 in. | FG© 135774



Alphonse-Leon Quizet (1885-1955) | *Place des Rigoles et rue des Pyrenees*  
oil on canvas | 23 5/8 x 28 3/4 in. | FG© 137139



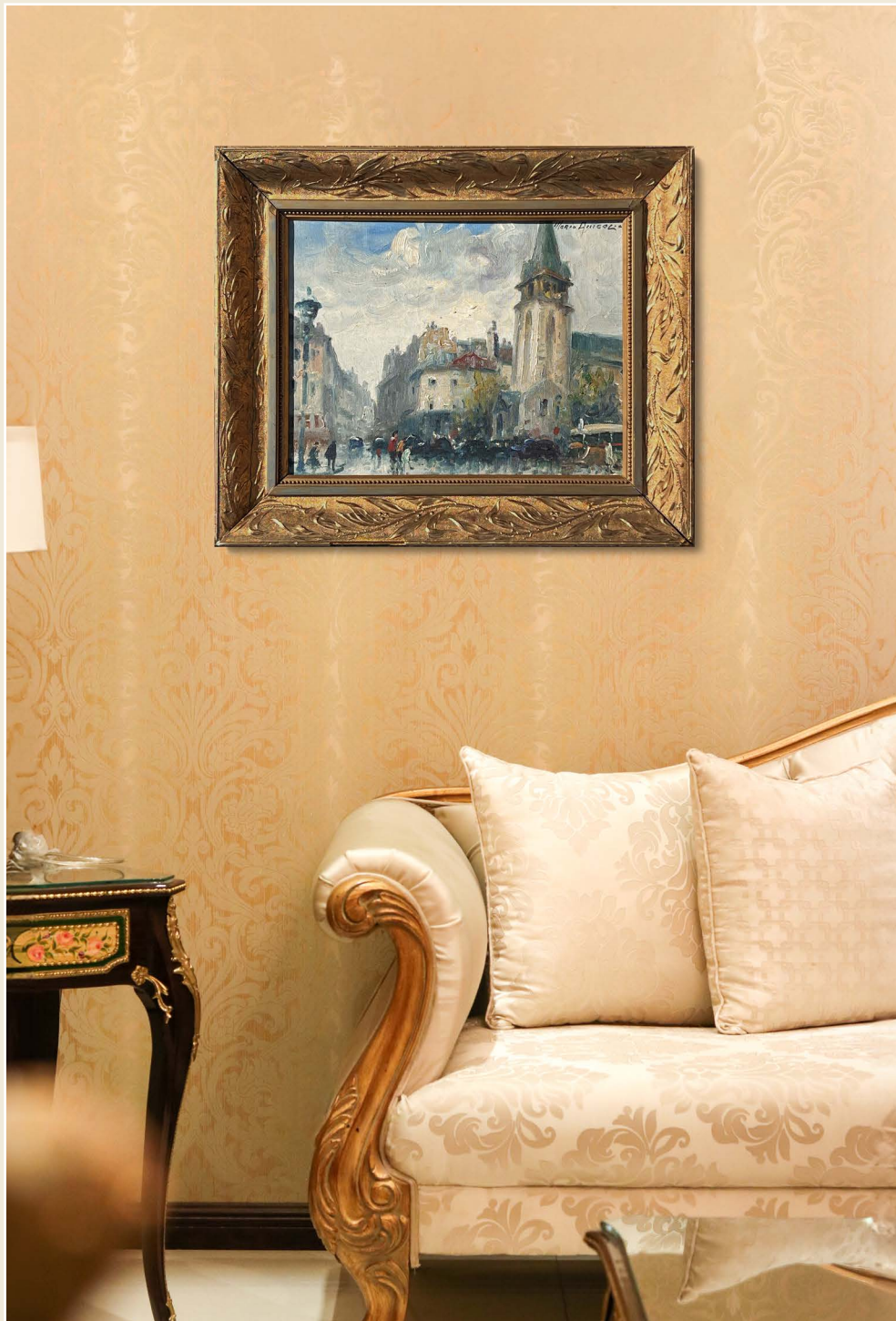
Alphonse-Leon Quizet (1885-1955)

*Rue animee en Paris*

---

oil on masonite  
28 3/4 x 36 1/4 in.  
FG© 137116

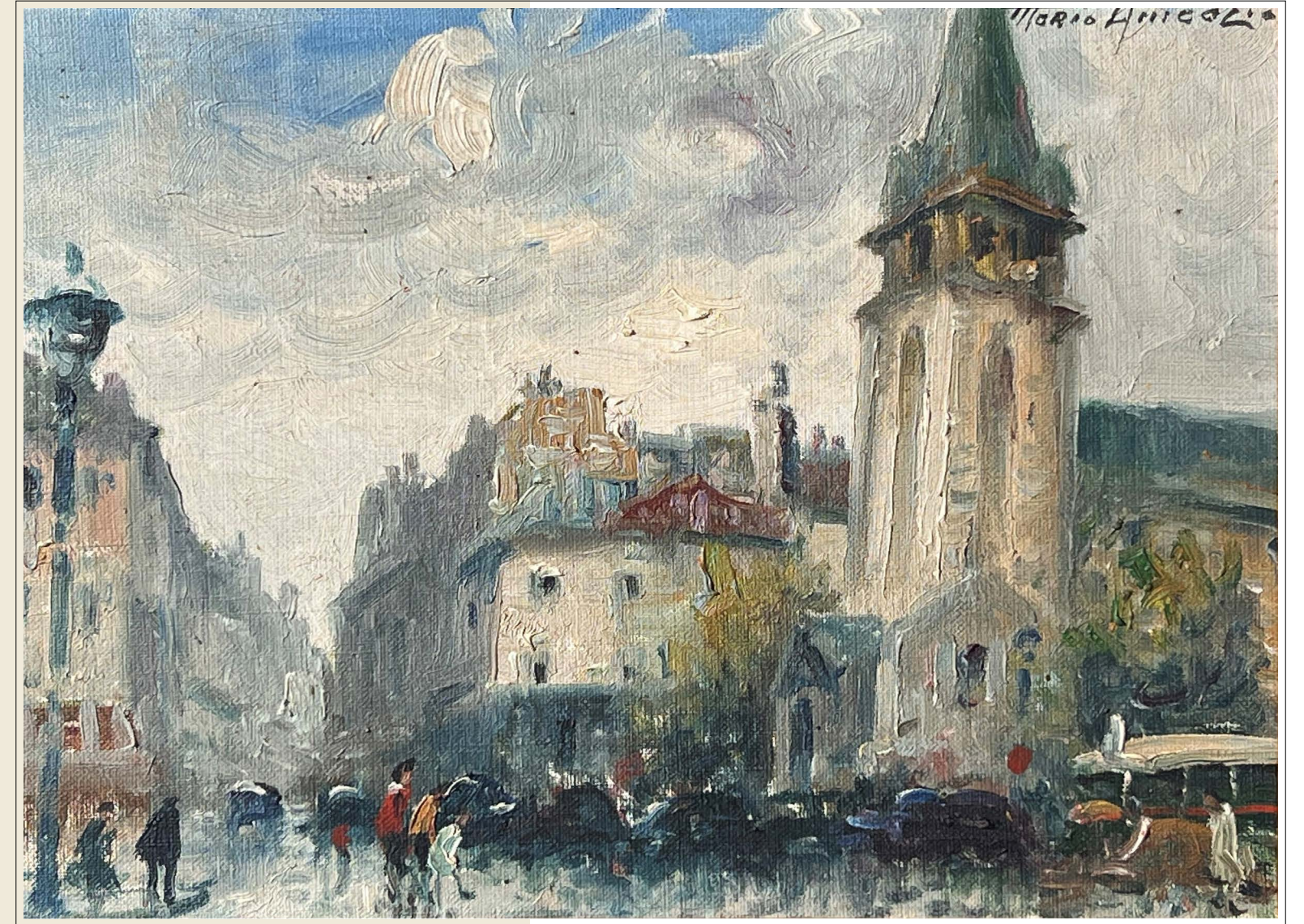




Merio  
**Ameglio**

*Eglise Saint-Germain-des-Pres*

oil on canvas  
9 7/16 x 13 in.  
FG© 136089





Merio Ameglio (1897-1970) | *Moulin Rouge*  
oil on canvas | 21 3/4 x 18 1/8 in. | FG© 131252



Merio Ameglio (1897-1970) | *Place Pigalle, Paris*  
oil on canvas | 13 x 16 1/4 in. | FG© 132127

Lucien  
**Adrion**

(1889-1953)

*Place de la Concorde*

oil on canvas

23 9/16 x 36 3/16 in.

FG© 136090







# FINDLAY GALLERIES

For inquiries, acquisitions and consignments please contact our galleries:

## **Palm Beach**

(561) 655-2090

[palmbeach@findlayart.com](mailto:palmbeach@findlayart.com)

165 Worth Avenue

Palm Beach, Florida 33480

## **New York**

(212) 421-5390

[newyork@findlayart.com](mailto:newyork@findlayart.com)

32 East 57<sup>th</sup> Street, 2<sup>nd</sup> Floor

New York, New York 10022

WWW.FINDLAYGALLERIES.COM