



FINDLAY GALLERIES

SPRINGMA
FABRICS
ZOO CHURCH

AN EXHIBITION OF
COLLAGE



FINDLAY GALLERIES

THREE CENTURIES IN ART

ACTIVATIONG ADDITIONS

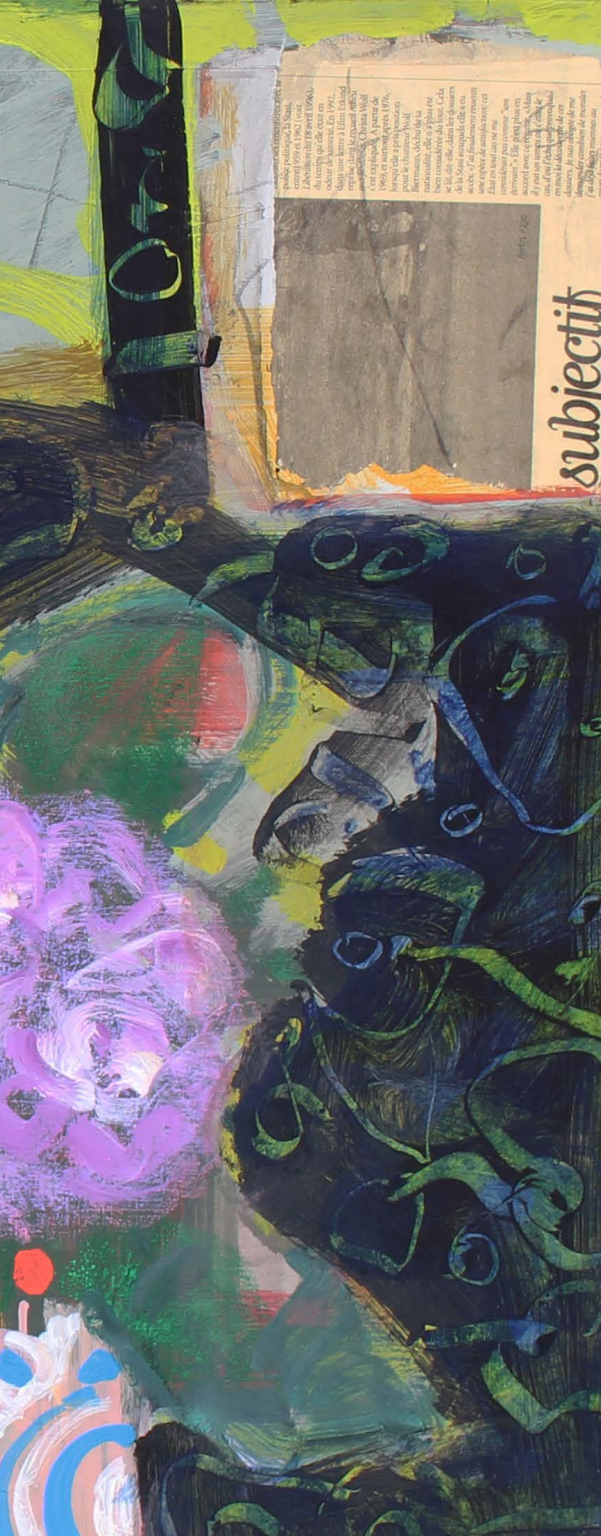
AN EXHIBITION OF COLLAGE

Originating in the early 20th-century modernist movement with leading practitioners such as Picasso and Braque, Collage is a dynamic medium that introduces everyday life into artwork through fragments of imagery, newsprint, photographs, and other materials. Transcending traditional boundaries of any single medium, combining disparate elements can disrupt the viewer's expectation or reinforce the artwork's narrative in unexpected and surprising ways. Our Collage Exhibition includes artists such as Byron Browne, Frank Lobdell, Gilles Gorriti, and Chuang Che and draws from diverse movements, including the Bay Area Figurative Movement, the School of Paris, and Taiwan's Fifth Moon Group.

BYRON BROWNE
•
CHUANG CHE
•
LEONARD EDMONDSON
•
GILLES GORRITI
•
FRANK LOBDELL
•
ROBERT NATKIN
•
ROBERT RICHENBURG

32 EAST 57TH STREET, 2ND FLOOR, NEW YORK, NEW YORK 10022 • (212) 421-5390
165 WORTH AVENUE, PALM BEACH, FLORIDA 33480 • (561) 655-2090

WWW.FINDLAYGALLERIES.COM



Gilles Gorriti (1939-2019)
Les hortensias
mixed media on canvas
39 3/8 x 31 7/8 in.
FG© 132197





Gilles Gorriti (1939-2019)
La partition de musique
mixed media on canvas
39 3/8 x 31 7/8 in.
FG© 133326



Gilles Gorriti (1939-2019)
Eventail
mixed media on canvas
36 1/4 x 28 3/4 in.
FG© 133321

Chuang Che (b. 1934)
Day & Night 6, 1971
acrylic and collage on canvas
17 x 33 1/2 in.
FG© 141116





Chuang Che (b. 1934)
Autumn
ink & collage on paper
15 x 19 in.
FG© 137633





Frank Lobdell (1921-2013) | *Pier 70, Drawing 12.30.93, 1993*
gouache, colored pencil, pastel, collage on paper | 17 x 20 in. | FG© 138716

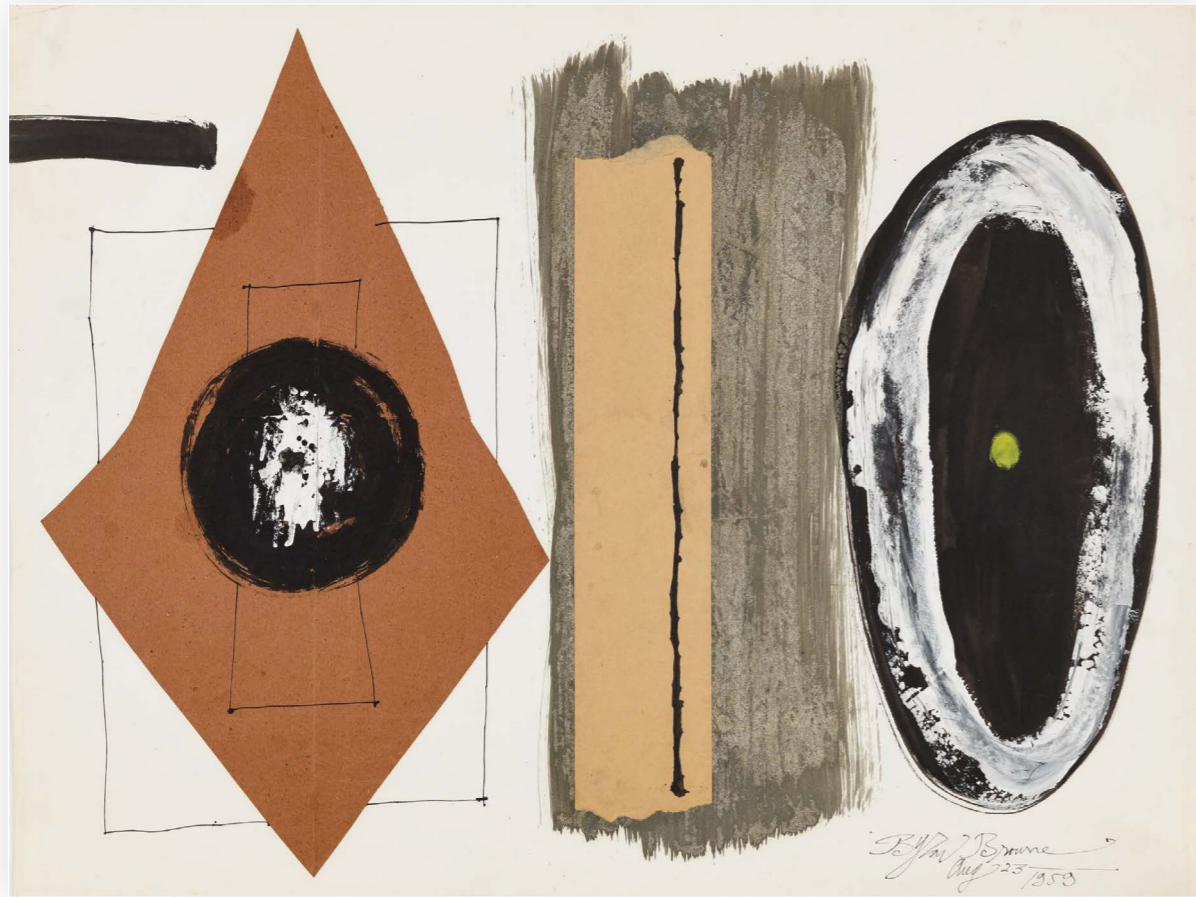


Robert Natkin (1930-2010) | *Love Chastised, 1985*
carved wood bas relief | 40 x 48 in. | FG© 140235



Robert Richtenburg (1917-2006)
Econoline, 1966
acrylic on paper
22 1/4 x 14 1/2 in.
FG© 140783





Byron Browne (1907-1961) | *Memories of Malaga IV*, 1959
tempera and collage | 20 x 26 in. | FG© 206453



Leonard Edmondson (1916-2002) | *Untitled Collage III*, 1964
mixed media on paper | 11 1/2 x 16 1/2 in. | FG© 206677



Leonard Edmondson (1916-2002) | *Untitled Collage I*, 1964
mixed media on paper | 11 1/2 x 16 1/2 in. | FG© 206675



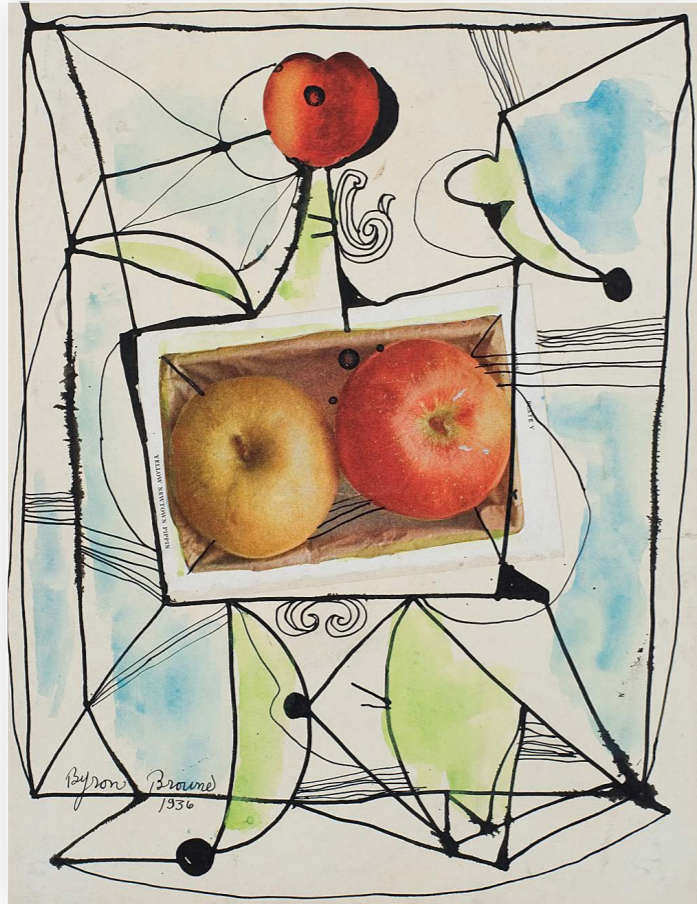
Leonard Edmondson (1916-2002) | *Untitled Collage IV*, 1964
mixed media on paper | 11 1/2 x 16 1/2 in. | FG© 206678



Robert Richenburg (1917-2006) | *Tic Tac Torn*, 1966
acrylic and collage on paper | 20 1/2 x 20 3/8 in. | FG© 202751



Robert Richenburg (1917-2006) | *Untitled III*, 1966
acrylic and collage on paper | 24 x 19 in. | FG© 206459



Byron Browne (1907-1961) | *A Feast of Apples*, 1936
collage, India ink, watercolor | 12 x 9 1/2 in. | FG© 204350



Byron Browne (1907-1961) | *Firedance*, 1958
casein, tempera, India ink and collage | 20 x 26 in. | FG© 206452

FINDLAY GALLERIES

THREE CENTURIES IN ART

For inquiries, acquisitions and consignments
please contact our galleries:

New York

(212) 421-5390

newyork@findlayart.com

32 East 57th Street, 2nd Floor

New York, New York 10022

Palm Beach

(561) 655-2090

palmbeach@findlayart.com

165 Worth Avenue

Palm Beach, Florida 33480

www.findlaygalleries.com