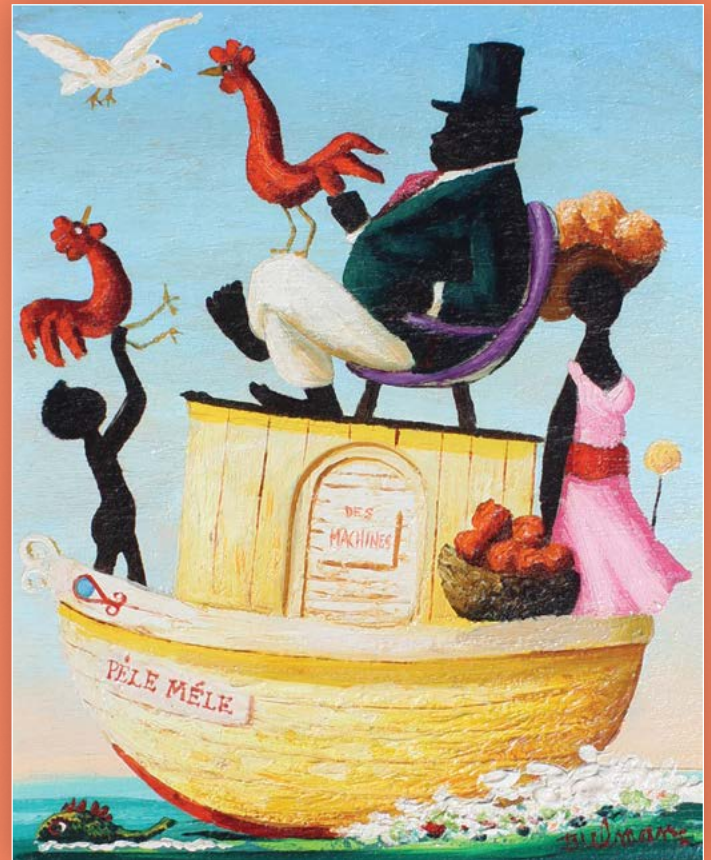


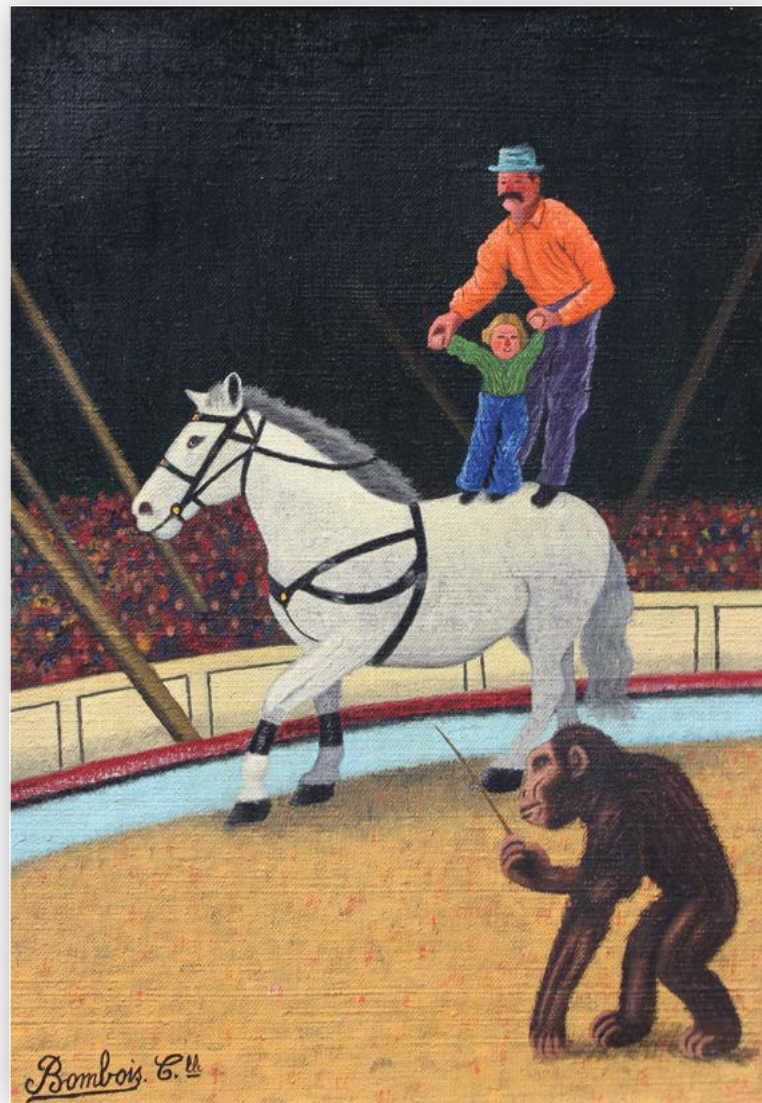
FINDLAY GALLERIES

THREE CENTURIES IN ART



ONE OF A KIND

A COLLECTION OF NAÏF ART



Camille Bombois (1883-1970)

Le Cirque

oil on canvas

13 x 9 7/16 in.

FG© 140807



FINDLAY GALLERIES

THREE CENTURIES IN ART

ONE OF A KIND

** A Collection of Nail Art **

165 WORTH AVENUE, PALM BEACH, FLORIDA 33480 • (561) 655-2090
32 EAST 57TH STREET, 2ND FLOOR, NEW YORK, NEW YORK 10022 • (212) 421-5390

WWW.FINDLAYGALLERIES.COM

Findlay Galleries is proud to present *One of a Kind*, an exhibition featuring paintings by Camille Bombois, Orville Bulman, Henri Maïk, Ljubomir Milinkov and Gustavo Novoa at our Palm Beach gallery.

While the first Naïf painters made an appearance in the 1600's, the work of Henri Rousseau in the late 1800's strongly influenced a future generation of artists who desired a primitive freshness in their work. The unfettered creativity that came with being self-taught defined the Naïf painter. As modern living reached all continents in the 20th century, the art world developed an affinity for the sophisticated simplicity of Naïf paintings, contrasting the graying and troubled world outside.

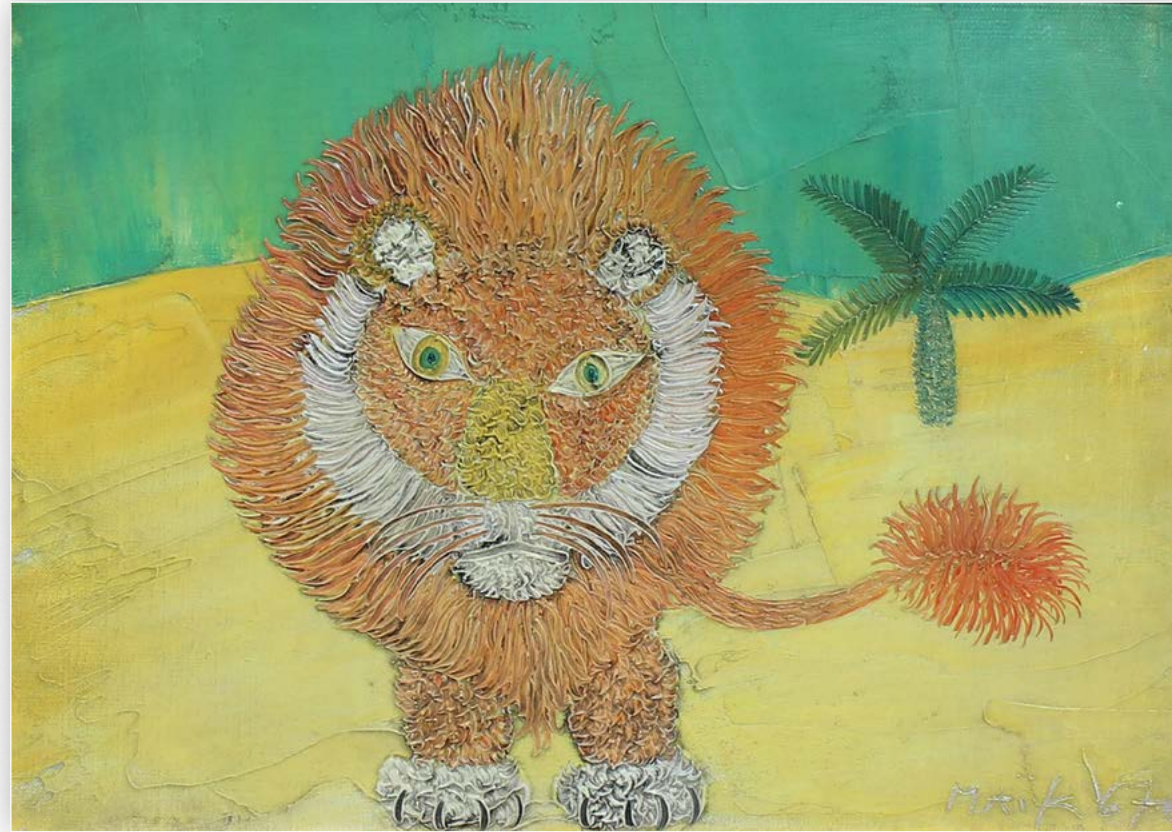
Beginning in 1931 with an exhibition at his Chicago gallery, Wally Findlay was the first US art dealer dedicated to developing and representing European Naïf painters. Findlay Galleries' first selection of works by Rousseau and Bombois eventually expanded to include contemporary artists such as Maïk, Ollivary, and Novoa. This new group used the Naïf style of painting to create art outside traditional realms; objects, landscapes, and creatures exist in an everlasting Eden. While different from their predecessors, they remained true to the craftsmanship, manifest sense of composition, expressive use of color, and solid foundation of design typical of Naïf painters. Findlay Galleries is delighted to share their creativity with you in this exhibition.



Detail image



Henrik Maik (1922-1993) | *Le Printemps*, 1963 | tapestry | 66 1/2 x 45 1/2 in. | FG© 141155



Henrik Maik (1922-1993) | *Lion in yellow*, 1967 | oil on canvas | 6 1/4 x 8 1/2 in. | FG© 141139



Gustavo Novoa | *Dusk* | acrylic on canvas | 36 x 36 in. | FG© 141044



Henrik Maik (1922-1993) | *Un Peroquet*, 1980 | oil on canvas | 9 7/16 x 13 in. | FG© 141146



Henrik Maik (1922-1993) | *Les Petits Canards*, 1980 | oil on canvas | 9 7/16 x 13 in. | FG© 141145

MAÏK

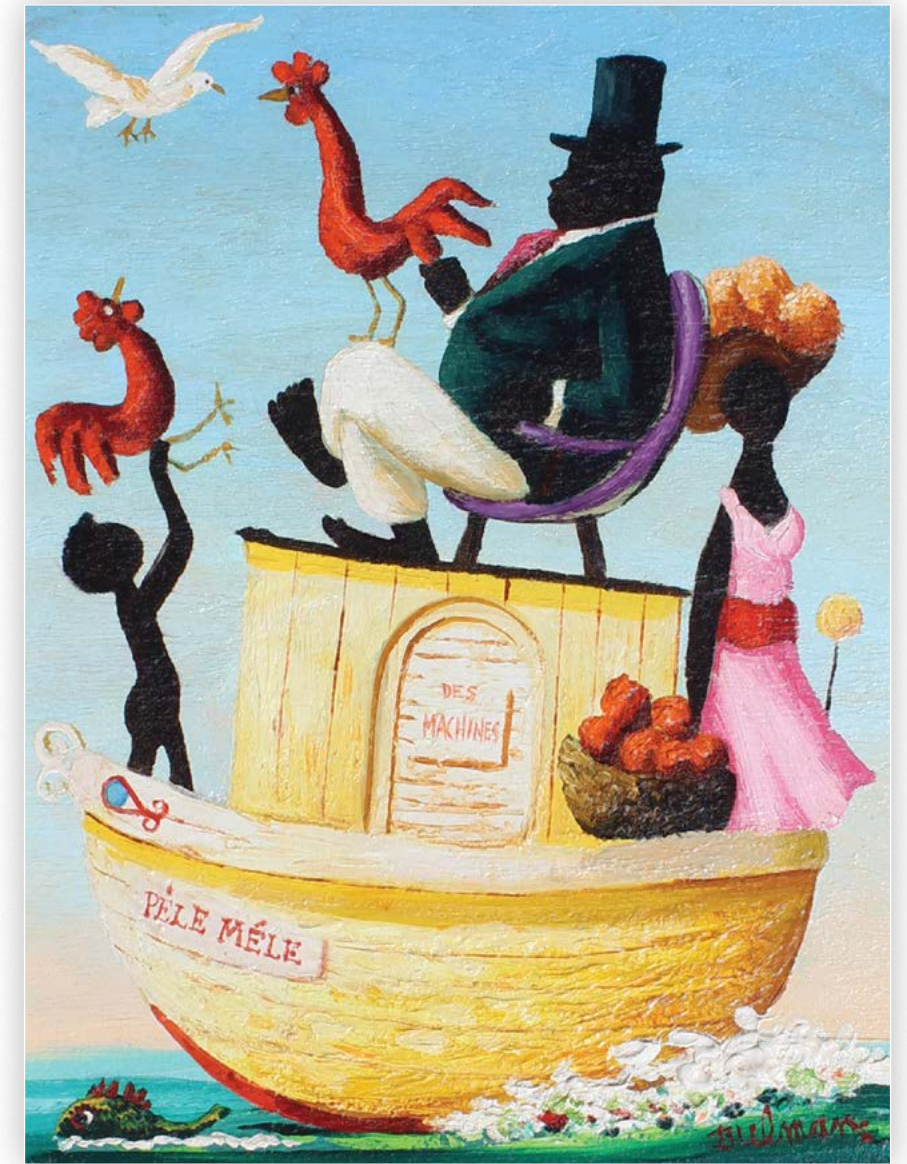
Henri Maïk (1922-1993)

Jungle Debut
oil on panel
59 x 78 3/4 in.
FG© 140754





Orville Bulman (1904-1978)
Le Barque Vendredi, 1975
oil on canvas
10 x 8 in.
FG© 140108



Orville Bulman (1904-1978)
Pele Mele
oil on canvas
10 x 8 in.
FG© 140657

Orville Bulman (1904-1978)
Patrole
oil on canvas
15 x 30 in.
FG© 140664



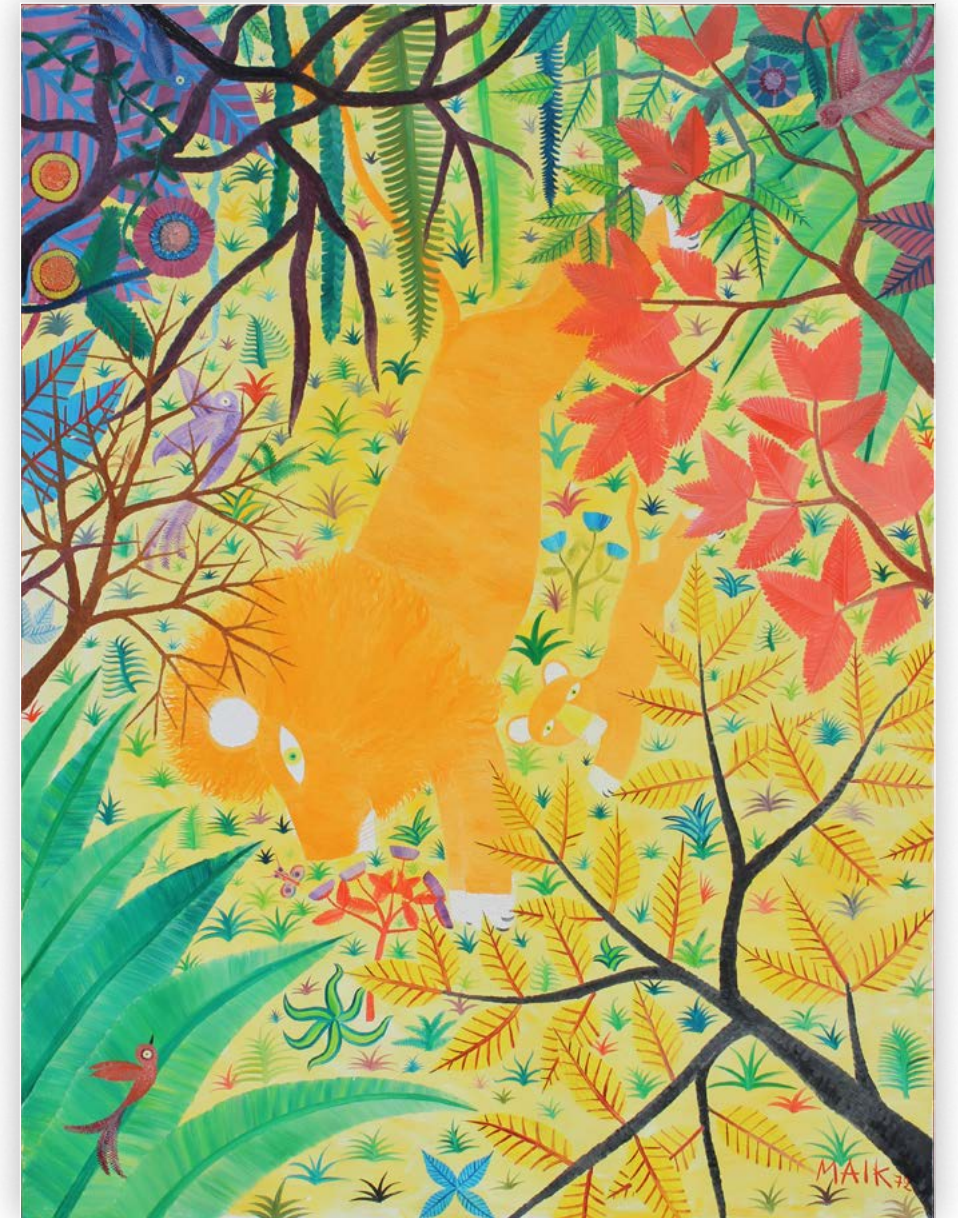
MAÏK

Henri Maïk (1922-1993)
Le chasseur de lions
tapestry
35 1/4 x 45 3/4 in.
FG© 140216





Annette Ollivary
La bain du petit frere
oil on canvas
9 7/16 x 7 7/16 in.
FG© 135797



Henri Maïk (1922-1993)
Le Bond d'un jeune Lion, 1972
oil on canvas
51 3/16 x 38 3/16 in.
FG© 141193

Helena Adamoff

Helena Adamoff (1906-1995)

Le jour de mariage. 1970

oil on canvas

14 15/16 x 21 5/8 in.

FG© 132927





Henrik Maïk (1922-1993) | *La chevre*, 1964 | oil on canvas | 31 7/8 x 39 3/8 in. | FG© 140751



Henrik Maïk (1922-1993) | *Le Rois*, 1977 | oil on canvas | 9 7/16 x 13 in. | FG© 141147



Detail image



Henrik Maik (1922-1993) | *Un jour de neige*, 1978 | oil on canvas | 51 1/8 x 76 3/4 in. | FG© 140748

Helena Adamoff

Helena Adamoff (1906-1995)
Reserve Privee, 1972
oil on canvas
14 15/16 x 21 5/8 in.
FG© 140523





Detail image

Gustavo Novoa
The Falls
acrylic on canvas
48 x 36 in.
FG© 141153



Bombois C. lle

Camille Bombois (1883-1970)

Filletes dans la Clairiers

oil on masonite

12 x 8 in.

FG© 131365



Gustavo Novoa

Gustavo Novoa
River Bank at Dawn
acrylic on canvas
30 x 40 in.
FG© 130626



FINDLAY GALLERIES

T H R E E C E N T U R I E S I N A R T

Please contact our galleries for
inquiries, acquisitions and consignments.

Palm Beach

(561) 655-2090

palmbeach@findlayart.com

165 Worth Avenue

Palm Beach, Florida 33480

New York

(212) 421-5390

newyork@findlayart.com

32 East 57th Street, 2nd Floor

New York, New York 10022

www.findlaygalleries.com

(cover left) **Orville Bulman** (1904-1978) | *Le Barque Vendredi*, 1975
oil on canvas | 10 x 8 in. | FG© 140108

(cover right) **Orville Bulman** (1904-1978) | *Pele Mele*
oil on canvas | 10 x 8 in. | FG© 140657