



FINDLAY GALLERIES

THREE CENTURIES IN ART

Please contact our galleries for
inquiries, acquisitions and consignments.

Palm Beach

(561) 655-2090

palmbeach@findlayart.com

165 Worth Avenue

Palm Beach, Florida 33480

New York

(212) 421-5390

newyork@findlayart.com

32 East 57th Street, 2nd Floor

New York, New York 10022

WWW.FINDLAYGALLERIES.COM

Copyright © December 2023, Wally Findlay Galleries International Inc. All rights reserved. No part of the images or text in this catalogue may be duplicated without permission of Findlay Galleries. Prices and availability of artwork featured in this catalogue are subject to change without notice.

FINDLAY GALLERIES

THREE CENTURIES IN ART

Isabelle de Ganay
ENVIRONS DE PARIS



FINDLAY GALLERIES

THREE CENTURIES IN ART

Isabelle de Ganay

ENVIRONS DE PARIS

165 WORTH AVENUE, PALM BEACH, FLORIDA 33480 • (561) 655-2090
32 EAST 57TH STREET, 2ND FLOOR, NEW YORK, NEW YORK 10022 • (212) 421-5390

WWW.FINDLAYGALLERIES.COM

Isabelle de Ganay

Maître de l'École de Rouen

Isabelle de Ganay was born in Rouen, France in 1960. Art and nature very quickly occupied a predominant place in her life. De Ganay discovered the same magic of the Normandy landscape that inspired the great artists of the French Schools of Impressionism, Rouen, and Normandy before her.

A naturally gifted painter, de Ganay was accepted into the famous l'École des Beaux-Arts de Rouen at the age of fifteen. This was a rare honor bestowed on someone so young, and she was quickly noticed by Albert Malet, the last impressionist painter of Rouen. A leader of the l'École de Rouen, Malet had been a student of Robert Antoine Pinchon and would become Isabelle's mentor.

After graduating first in her class at the Académie Julian and l'École des Beaux-Arts in Paris, de Ganay returned to Rouen and began exhibiting throughout France. She was subsequently discovered by Wally Findlay Galleries, which began exhibiting her work in Chicago, New York, Palm Beach, East Hampton, and Beverly Hills.

The year 1986 was a turning point in the young career of de Ganay as well as in the leadership of the traditional l'École de Rouen. Albert Malet, who had always been aware of her gifts as a painter, designated de Ganay as his successor. Upon his death that year, she assumed his position and became Maître de l'École de Rouen, a position never held by a female artist.

L'École de Rouen was suddenly a school ahead of its time. From this point forward, a woman artist was now responsible for passing on the knowledge, technique, and practice of one of the oldest French schools of art. Thus, she followed the trailblazing steps of other female Impressionist artists like Berthe Morisot, Mary Cassatt, Marie Bracquemond, and Paule Gobillard.

"What I wish, above all, is to continue progressing. To be ever closer to nature and to better translate it onto canvas. One doesn't impose oneself on a subject. It is futile to take up the brushes if you haven't felt the emotional impact, which leads to creation. As for me, it is in nature that is born the irresistible desire to paint."

– Isabelle de Ganay

Like the previous masters, Isabelle de Ganay is a passionate disciple of plein air painting. The plein air practice created and championed by the Schools of Rouen and Normandy allows her to fully sense the changes in atmosphere and light, translating onto canvas the ephemeral moments of the changing landscape. Today, de Ganay continues to promote the Rouen tradition. The artist is often found alone or with her students, traveling the French countryside looking for the light to illuminate her canvases.

De Ganay has had numerous successful exhibitions worldwide. Her position as a member of the Société des Artistes Français and the presence of her works in prestigious collections across France and the rest of the world is affirmation of her continually expanding reputation as one of the most accomplished contemporary impressionists.

Findlay Galleries is honored to have represented Isabelle de Ganay exclusively for the past 27 years. We are proud to present a new collection of works by the uniquely talented and highly praised French artist.

Jardins et fleurs

Gardens & Flowers

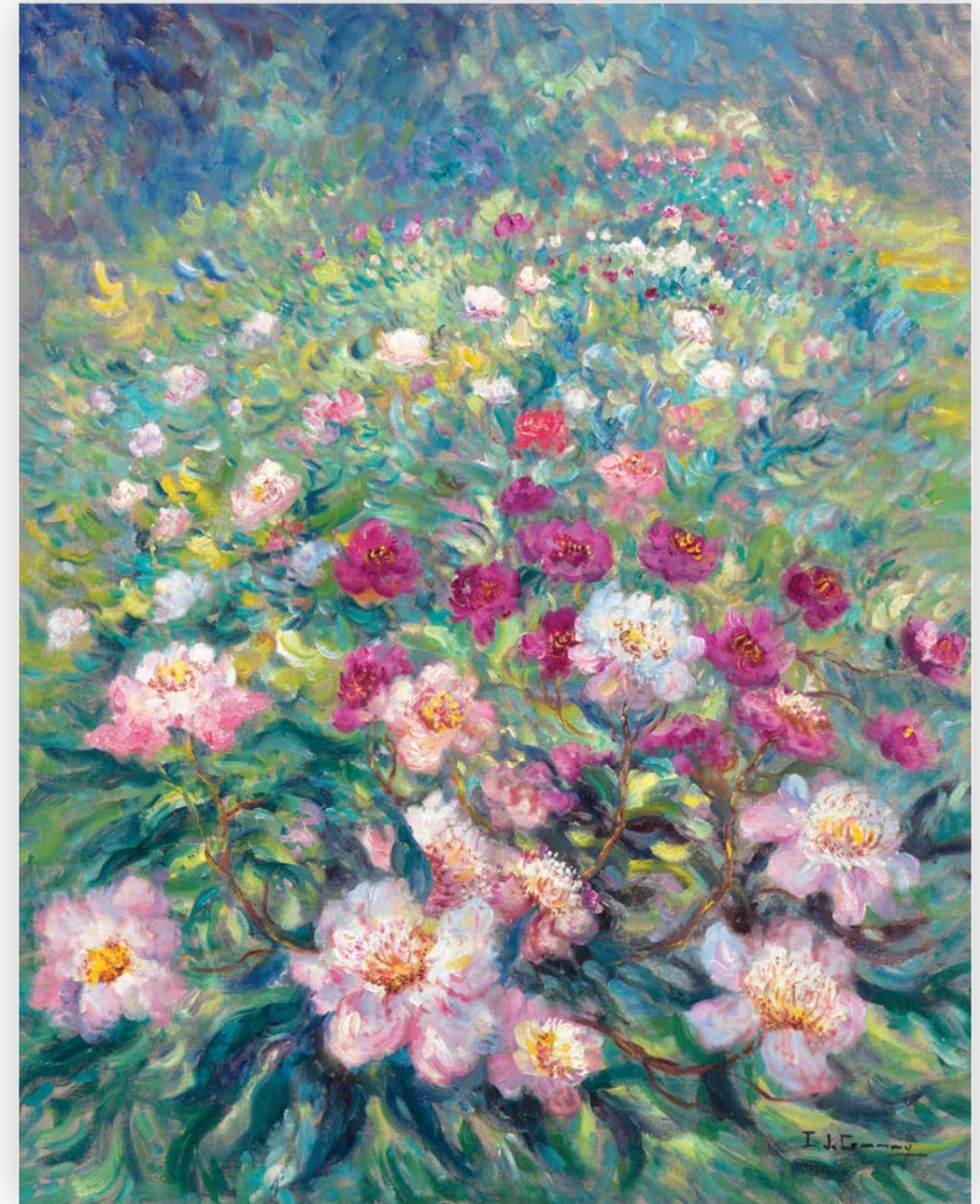
Jacynthes sous bois

oil on canvas
28 3/4 x 36 1/4 in.
FG© 141245





Kiosque de Bagatelle | oil on canvas | 23 5/8 x 28 3/4 in. | FG© 141228



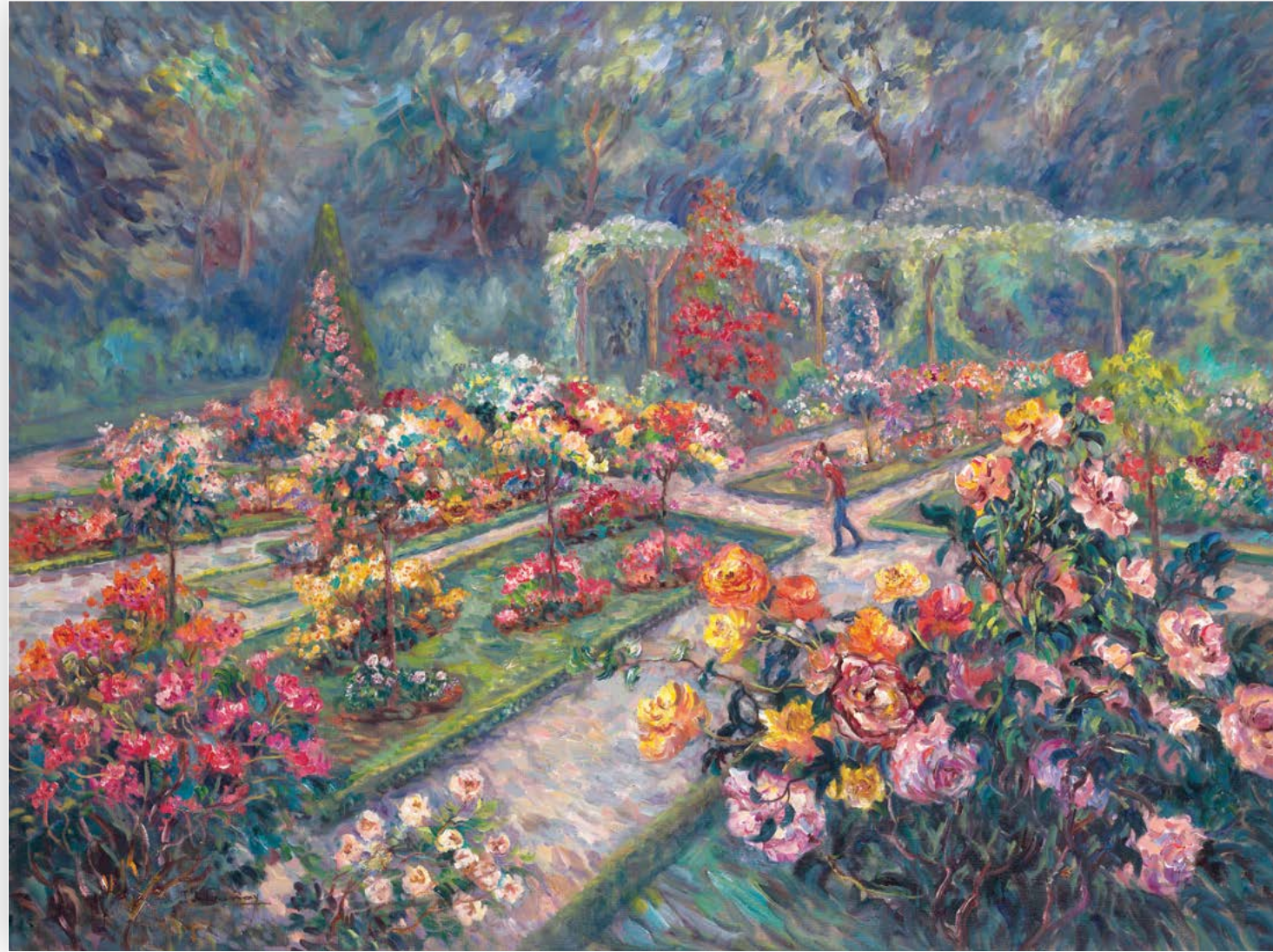
Dalhias à Bagatelle | oil on canvas | 36 1/4 x 28 3/4 in. | FG© 141250



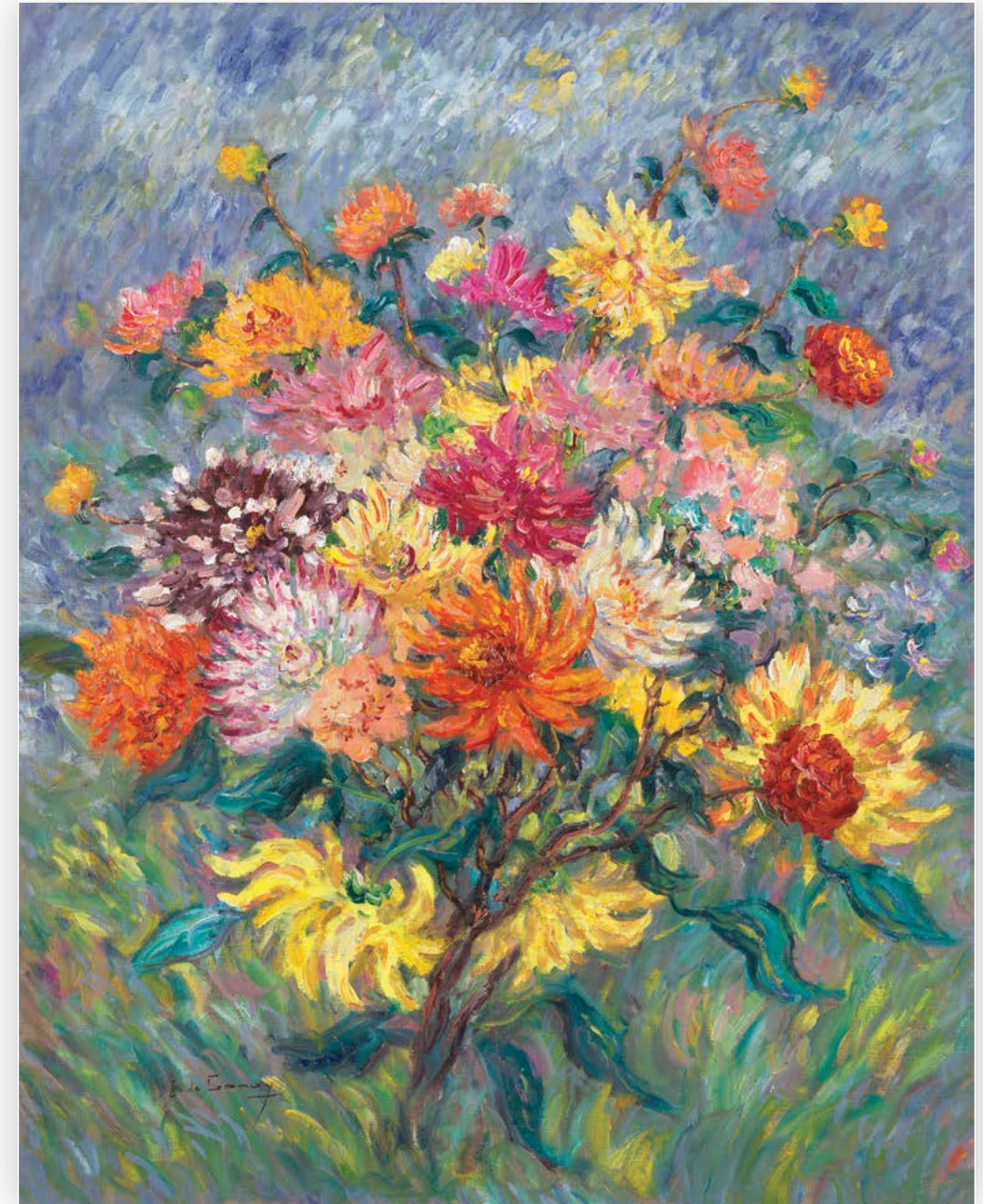
Detail image



Mallorca Baléares | oil on canvas | 76 3/4 x 51 3/16 in. | FG© 141276



Promeneur à Bagatelle | oil on canvas | 38 3/16 x 51 3/16 in. | FG© 141267



Dalhias | oil on canvas | 36 1/4 x 28 3/4 in. | FG© 141246

“Cover the canvas at the first go, then work at it until you see nothing more to add.”

- Camille Pissarro

Jardin à Varengeville

oil on canvas
38 3/16 x 51 3/16 in.
FG© 141270



Sentiers et étangs

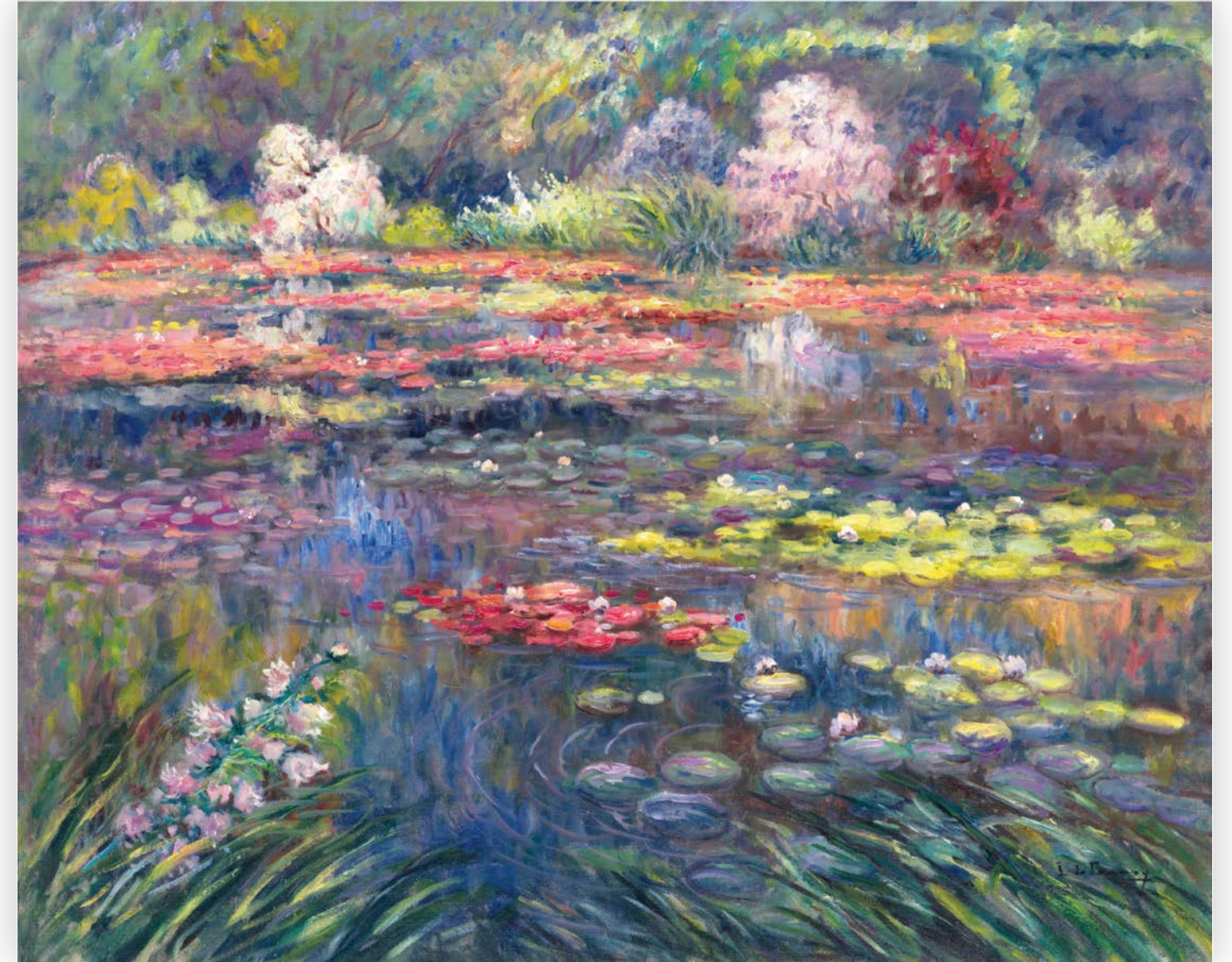
Paths and Ponds

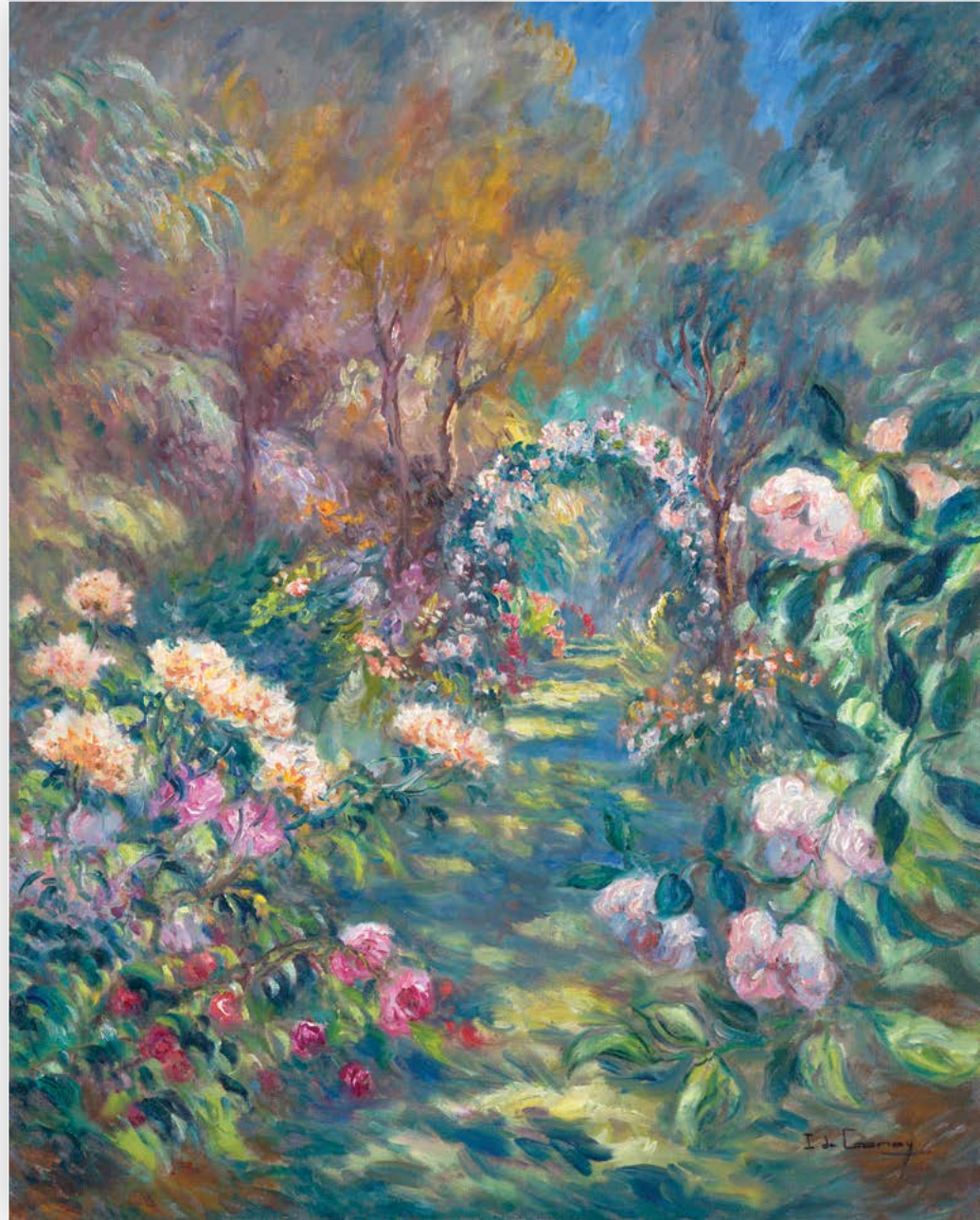
"...people must first of all learn to look at nature,
and only then may they see and understand what
we are trying to do."

– Claude Monet

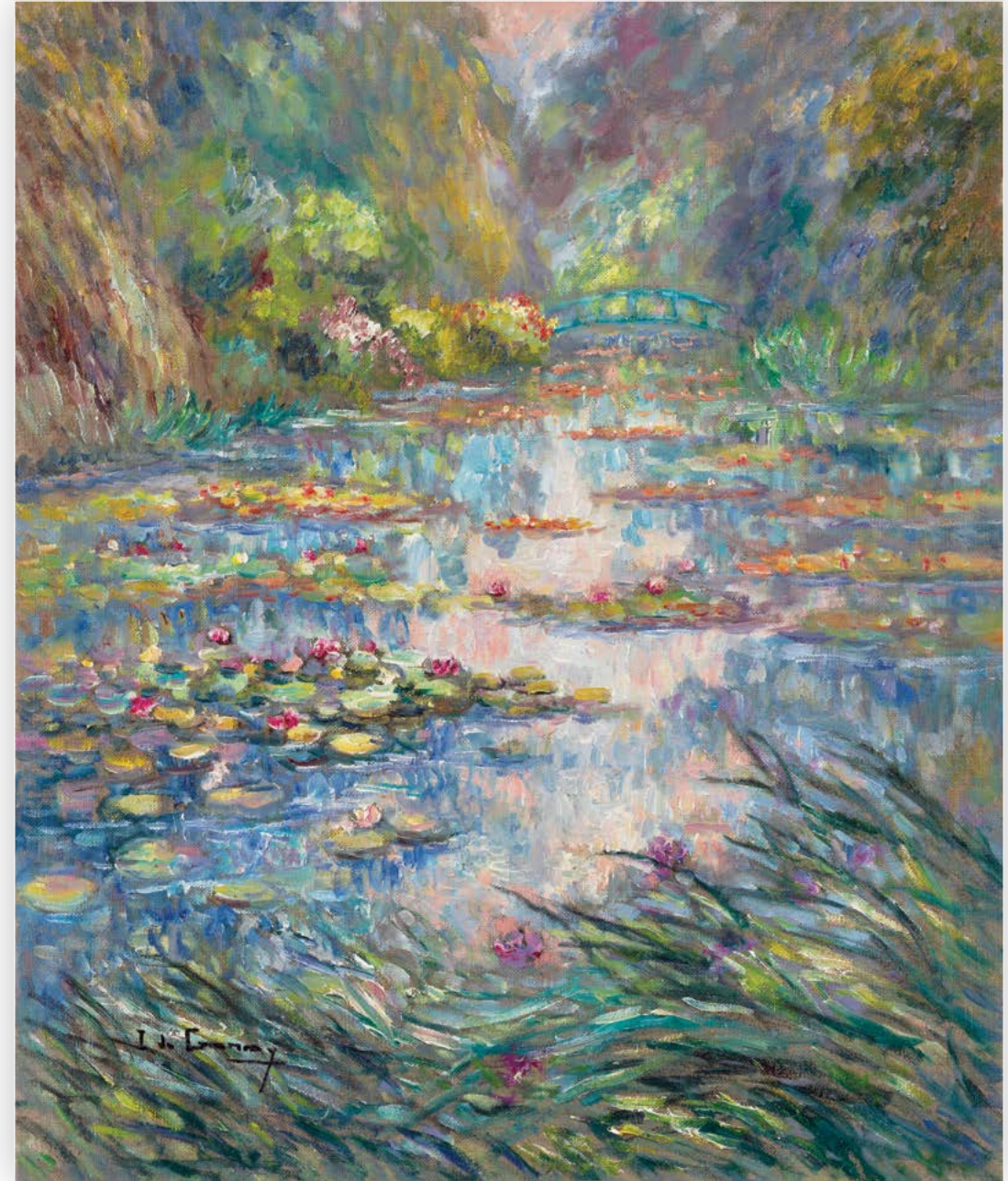
(cover) *Etang de Giverny*

oil on canvas
31 7/8 x 39 3/8 in.
FG© 141255





Reverie | oil on canvas | 36 1/4 x 28 3/4 in. | FG© 141251



Petit pont à Giverny | oil on canvas | 25 9/16 x 21 1/4 in. | FG© 141216

“One could not imagine a more sincere tribute to nature than that of Isabelle de Ganay, who pursues impertubably the search of light and color which has been the quest of the Impressionists.”

– Caroline Larroche, French Art Critic

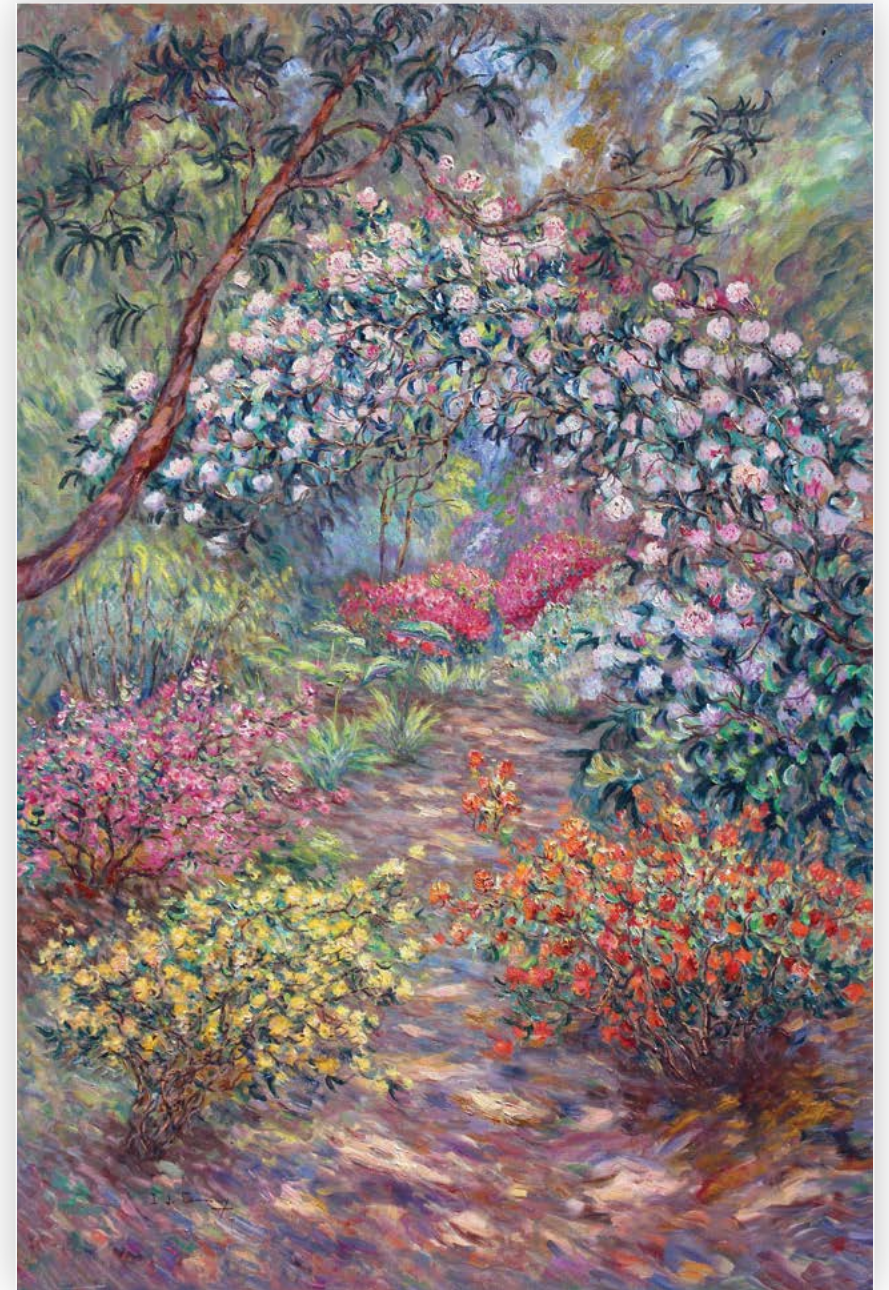
Les poissons rouges

oil on canvas
28 3/4 x 36 1/4 in.
FG© 141253





Detail image



Varangeville | oil on canvas | 76 3/4 x 51 3/16 in. | FG© 141275

*Paysages
aquatiques*
Seascapes

Plage de Noirmoutier en Isle

oil on canvas
23 5/8 x 36 1/4 in.
FG© 141241



“Everything that is painted directly and on the spot always has strength, a power, and a vivacity of touch one cannot recover in the studio. Three strokes of the brush in front of nature are worth more than two days of work at the easel in the studio.”

– Eugene Boudin

Parasole multicolores

oil on canvas
44 7/8 x 57 1/2 in.
FG© 141273





Duclair sur la Seine | oil on canvas | 31 7/8 x 39 3/8 in. | FG© 141254



Le Conhiou | oil on canvas | 31 7/8 x 39 3/8 in. | FG© 141259



Detail image



Paysage exotique | oil on canvas | 51 3/16 x 38 3/16 in. | FG© 141272



Vers Ongle | oil on canvas | 23 5/8 x 28 3/4 in. | FG© 141231



La riviere de l'Eure | oil on canvas | 28 3/4 x 36 1/4 in. | FG© 139249



Automne à Sahurs | oil on canvas | 28 3/4 x 36 1/4 in. | FG© 141249

Exhibitions

- | | | | |
|------|---|------|--|
| 1985 | Salle Siegfried | 1997 | Galerie de l'Estuaire, Le Havre, France
Galerie Tuffier, Les Andelys, France
Chateau d'Etelan, Saint Maurice d'Etelan, France
Wally Findlay Galleries, New York |
| 1986 | Galerie Sautreuil, Saint Wandrille Rancon | 1998 | Wally Findlay Galleries, Palm Beach & New York |
| 1987 | Salon des Artistes Francais, Paris
Salon de Pontoise, Paris
Societaire des Artistes Francais, Paris | 1999 | Wally Findlay Galleries, Chicago & New York |
| 1988 | Gallerie Wallet Fouque, Amiens | 2000 | Wally Findlay Galleries, Palm Beach |
| 1989 | Galerie du Moulin Saint Dominique, Aumale
Fondation Princesse Tran Chateau de Pinterville | 2001 | Wally Findlay Galleries, Palm Beach & New York |
| 1990 | Galerie du Chenil, Grainville, Ymauville
Galerie de la Vielle, Ville, Geneva | 2002 | Wally Findlay Galleries, East Hampton & Palm Beach
Château de Vollore Musée, Vollore-Ville, France |
| 1991 | Galerie Gericault, Rouen
Salon de Mars, Paris
Art au Plaza, Plaza Athenee, Paris
Galerie Alain Letailleur, Paris | 2003 | Wally Findlay Galleries, New York |
| 1992 | La Galerie, London
Conseil General de Rouen
Galerie de la Vielle, Ville, Geneva | 2005 | Wally Findlay Galleries, Palm Beach |
| 1993 | Galerie Katia Granoff, Honfleur
Selective Eye Gallery, Jersey
Conseil General de l'Essonne
Galerie Marie Jane Garoche, Paris | 2006 | La Galerie, London |
| 1994 | La Galerie, London
The China Club, Hong Kong
Chateau de Vollore, Fondation La Fayette | 2006 | Wally Findlay Galleries, New York |
| 1995 | Galerie Marie Jane Garoche, Paris
Galerie du Chenil, Grainville, Ymauville
Galerie Wallet Fouque, Amiens | 2008 | <i>The Enchanted Garden</i> ,
Wally Findlay Galleries, Palm Beach |
| 1996 | La Galerie, London
Musee de Jersey, Jersey
Galerie de la Vielle Ville, Geneva | 2008 | <i>Classical Impressionism</i> ,
Wally Findlay Galleries, New York |
| | | 2008 | <i>Classical Impressionism</i> ,
Wally Findlay Galleries, Palm Beach |
| | | 2010 | <i>Beyond the Moment</i> ,
Wally Findlay Galleries, New York |
| | | 2013 | <i>Maître de l'école de Rouen</i> ,
Wally Findlay Galleries, New York |
| | | 2014 | <i>20th Century Impressionist Landscape Paintings</i> ,
Wally Findlay Galleries, Palm Beach |
| | | 2014 | <i>Maître de l'école de Rouen</i> ,
Wally Findlay Galleries, New York & Palm Beach |
| | | 2015 | <i>Maître de l'école de Rouen</i> ,
Wally Findlay Galleries, Palm Beach |
| | | 2018 | <i>Ecole Normande - French Painters of the 19th
and 20th Century</i> , Findlay Galleries,
New York & Palm Beach
Dongsung Gallery, Seoul, South Korea |
| | | 2019 | <i>Maître de L'Ecole de Rouen</i> , Findlay Galleries, New York |
| | | 2020 | <i>Le Maître Impressioniste</i> , Findlay Galleries, Palm Beach |
| | | 2022 | <i>Summer Selections - Contemporary Artists and Estates</i> ,
Findlay Gallery, Palm Beach |
| | | 2023 | <i>Eviron de Paris</i> , Findlay Galleries, Palm Beach |