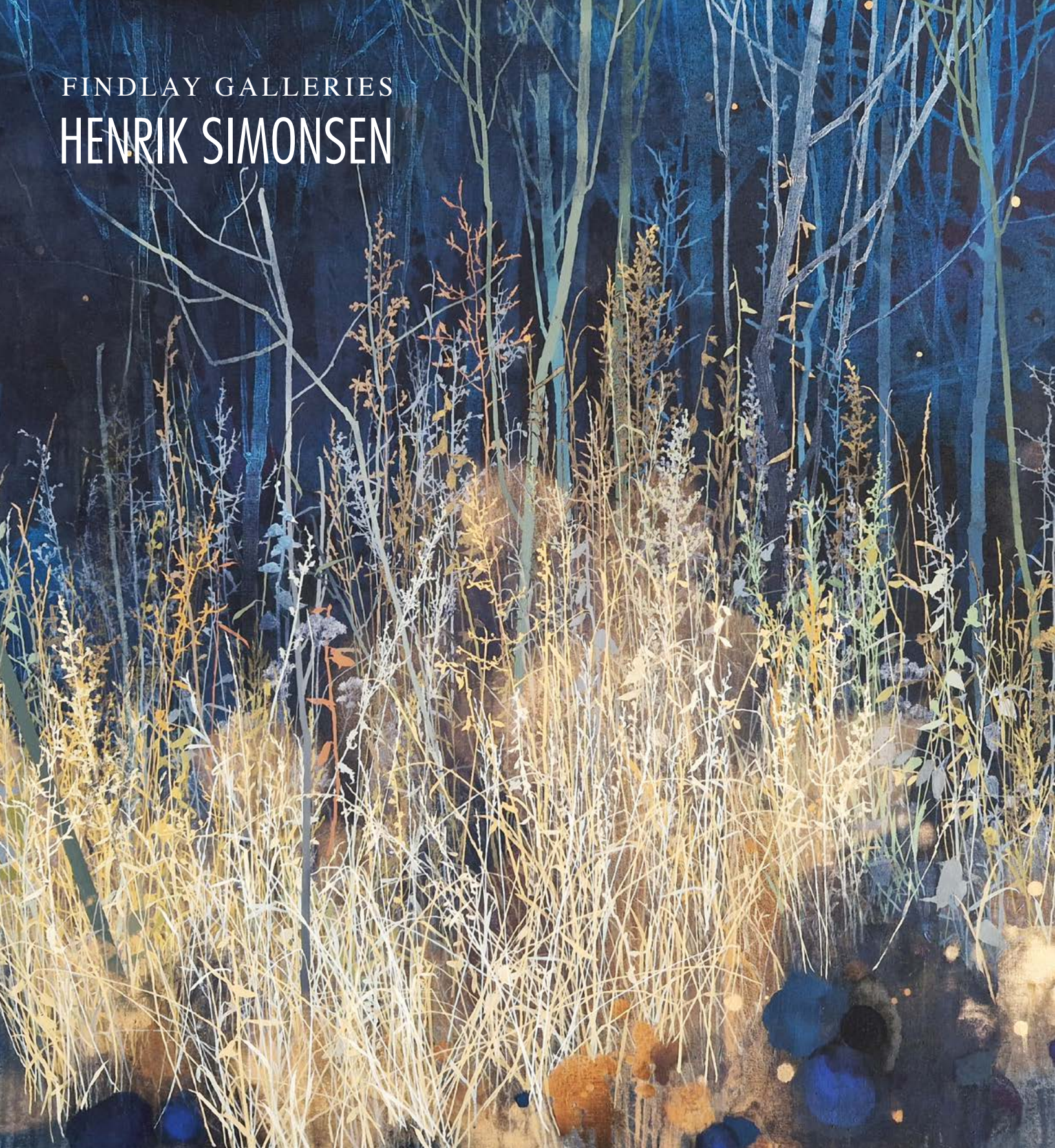


FINDLAY GALLERIES  
HENRIK SIMONSEN





# FINDLAY GALLERIES

THREE CENTURIES IN ART

## HENRIK SIMONSEN

DANISH CONTEMPORARY PAINTER

32 EAST 57<sup>TH</sup> STREET, 2<sup>ND</sup> FLOOR, NEW YORK, NY 10022 · (212) 421-5390

165 WORTH AVENUE, PALM BEACH, FL 33480 · (561) 655-2090

[WWW.FINDLAYGALLERIES.COM](http://WWW.FINDLAYGALLERIES.COM)

Copyright © November 2023, Wally Findlay Galleries International Inc. All rights reserved.

# The Last of the Melting Snow

---

oil on linen  
51 1/8 x 55 1/8 in.  
FG© 141189





Snowing | oil on linen | 19 5/8 x 19 5/8 in. | FG© 141186



Black and Snow | oil on linen | 51 x 59 in. | FG© 141182

# The Snow Came

---

oil on linen  
55 1/8 x 47 1/4 in.  
FG© 141184





Golden Light | oil on linen | 43 1/8 x 55 in. | FG© 141183

"Fields of grass make me think of people. Who grew tallest?,  
who is in the shadows?, each straw an individual person."

– Henrik Simonsen



Dark Blue and Grass | oil on linen | 47 1/4 x 47 1/4 in. | FG© 141188



FG© 141175



FG© 141176



FG© 141177

## Orchard I, II and III

oil on linen

55 1/8 x 51 1/8 in. (each)

(available separately or together)

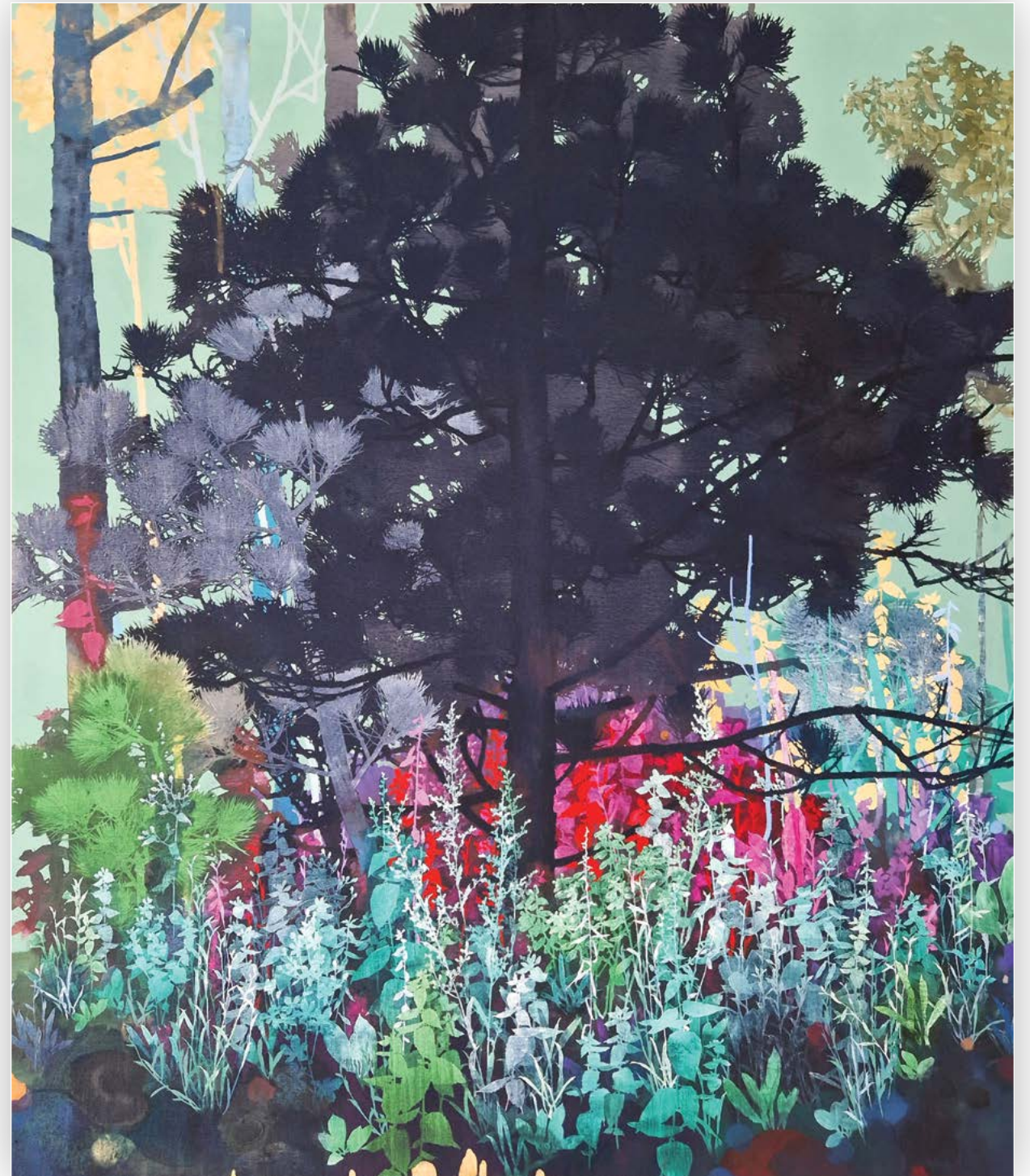
"When painting these works I kept adapting and working the canvas. In my process I have learned that it does not matter how long you work with art, you still need to listen and look at what you have in front of you rather than push a preconceived idea.

These three works are based on a treasured childhood memory of finding an abandoned apple orchard. The final result rendered a more minimalistic composition – I did less, stripped it back, leaving more focus on the initial layers that aligned better with my visual memory." – Henrik Simonsen

# Black Pine

---

oil on linen  
59 x 51 1/8 in.  
FG© 141181







Blue Sky | oil on linen | 19 5/8 x 19 5/8 in. | FG© 141187



Red Soil | oil on linen | 59 1/16 x 55 1/8 in. | FG© 141179

# In the Shadows

---

oil on linen  
59 1/8 x 51 1/8 in.  
FG© 141180



## Yellow Tree

---

oil on linen  
59 x 55 1/8 in.  
FG© 141178

“I invited all the colors and they all made it.”

– Henrik Simonsen





*All the Plants* | oil on linen | 51 3/16 x 35 1/2 in. | FG© 141185

## Exhibitions

- |      |  |      |  |
|------|--|------|--|
| 2023 | Findlay Galleries, New York, USA   | 2007 | Opus Fine Art, Newcastle upon Tyne, UK<br>Forster Gallery, London, UK<br><i>AAF New York Contemporary Art Fair</i> , New York, USA<br>Fairfax Gallery, Tunbridge Wells and London, UK  |
| 2022 | Findlay Galleries, Palm Beach, USA   | 2006 | <i>Chase Charity Exhibition</i> - Royal College, London, UK<br>Byard Gallery, Cambridge, UK<br>Fairfax Gallery, Tunbridge Wells and London, UK<br>Royal Opera House, London, UK  |
| 2020 | Findlay Galleries, Palm Beach, USA   | 2005 | Fairfax Gallery, Tunbridge Wells and London, UK<br>Gallery 54 Mayfair, London, UK<br><i>AAF New York Contemporary Art Fair</i> , New York, USA<br>The Curwen Gallery, London, UK<br>Art London, London, UK<br>Byard Gallery, Cambridge, UK<br>Hicks Gallery, Wimbledon, UK<br>Worx of Art, Hitchin, UK |
| 2018 | Findlay Galleries, Palm Beach, USA   | 2004 | <i>AAF</i> , Battersea, London, UK<br>Hicks Gallery, Wimbledon, UK<br>Maltby Contemporary Art, Winchester, UK<br>Quodart, Brighton, UK<br>Carlos Galai Art Foundation, Colombia  |
| 2014 | <i>A Visual Diary</i> - Wally Findlay Galleries,<br>Palm Beach, USA  | 2002 | The White Gallery, Brighton, UK<br>Maltby Contemporary Art, Winchester, UK   |
| 2012 | <i>Garden Tales</i> - Galleri Christoffer Egelund,<br>Copenhagen, Denmark<br><i>Between the Trees</i> - Wally Findlay Galleries,<br>New York, USA  | 2001 | The White Gallery, Brighton, UK  |
| 2011 | <i>Eyestorm</i> - Barbican, London, UK<br><i>Multiplied Art Fair</i> - Christies, London, UK<br><i>Where Wild Things Grow</i> - Customs House,<br>Newcastle upon Tyne, UK<br><i>London Art Fair</i> - Islington, London, UK                                    | 2000 | The Huntington Gallery, Los Angeles, USA<br>Gjethus Museet, Frederiksvaerk, Denmark<br>The White Gallery, Brighton, UK   |
| 2010 | Galleri Christoffer Egelund,<br>Copenhagen, Denmark<br><i>Multiplied Art Fair</i> - Christies, London, UK<br><i>Scope Art Fair</i> - Miami, USA<br><i>Summer Exhibition</i> - Opus Fine Art,<br>Newcastle upon Tyne, UK<br><i>London Art Fair</i> - London, UK | 1998 | Spacex Gallery, Exeter, UK   |
| 2009 | <i>Scope Art Fair</i> - Miami, USA<br>Kruishoutem Museum, Belgium<br>Beaux Arts, Bath, UK<br><i>London Art Fair</i> - London, UK   | 1997 | Alfredo Gallery, Venice, Italy   |
| 2008 | Opus Fine Art, Newcastle upon Tyne, UK<br><i>Kounter Kulture</i> - Opus Fine Art, London, UK<br>Forster Gallery, London, UK<br>Bunny Gunner, Los Angeles, USA<br><i>Scope Art Fair</i> - Basel, Switzerland<br><i>London Art Fair</i> - London, UK             | 1996 | 3 1/2 Gallery, Montclair, New Jersey, USA  |



# FINDLAY GALLERIES

THREE CENTURIES IN ART

Please contact our galleries for  
inquiries, acquisitions and consignments.

## **Palm Beach**

(561) 655-2090

[palmbeach@findlayart.com](mailto:palmbeach@findlayart.com)

165 Worth Avenue

Palm Beach, Florida 33480

## **New York**

(212) 421-5390

[newyork@findlayart.com](mailto:newyork@findlayart.com)

32 East 57<sup>th</sup> Street, 2<sup>nd</sup> Floor

New York, New York 10022

[WWW.FINDLAYGALLERIES.COM](http://WWW.FINDLAYGALLERIES.COM)